

Understanding the Decennial Census

Erin Hutcheson
Population Division

What this talk is about

- Data Collection in the 2020 Census
- Data Processing in the 2020 Census

Overview of the 2020 Census

2020 Census

- Every 10 years
- Residence
Population and
Housing Units



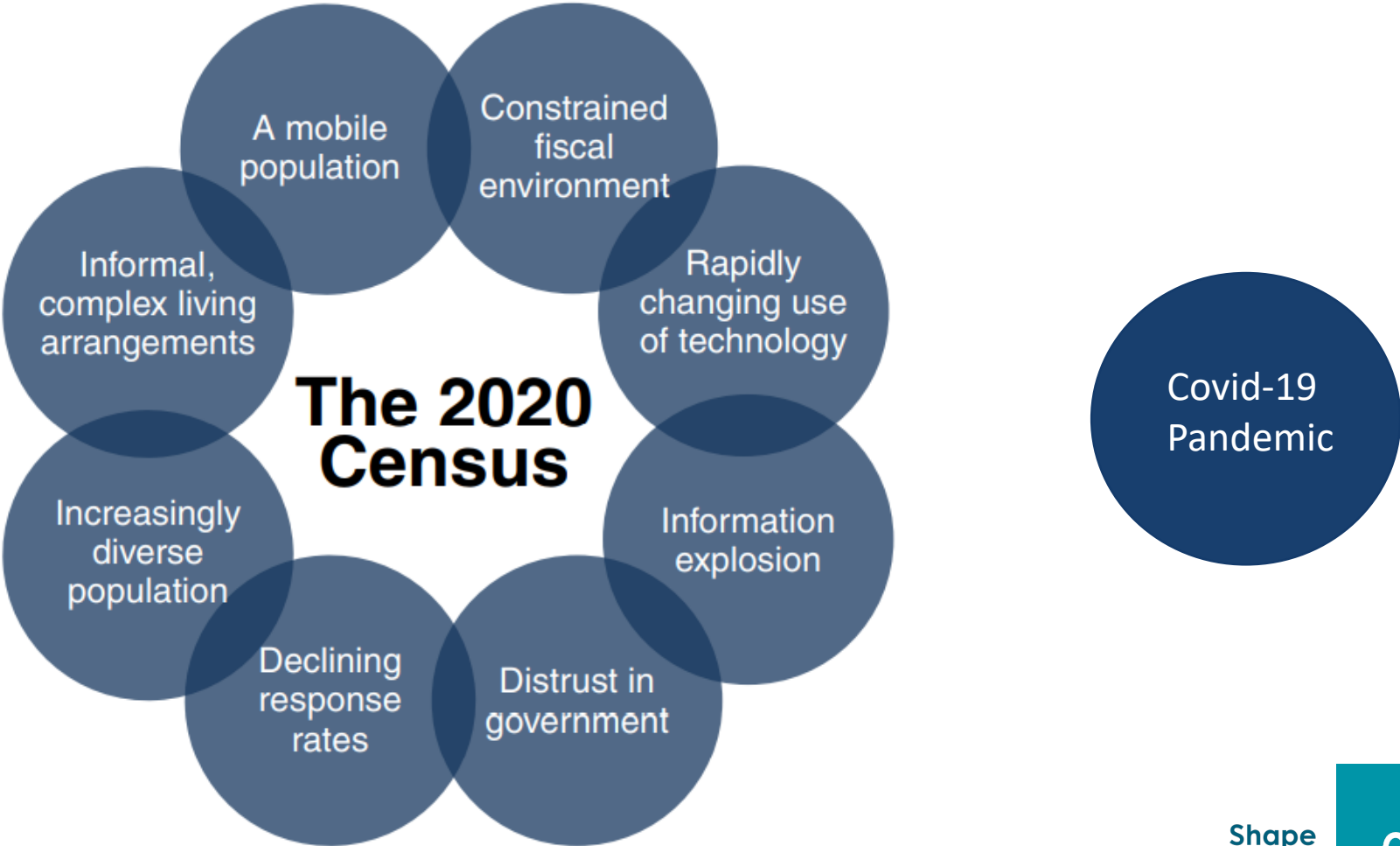
**Count everyone once,
only once, and in the right place.**

2020 Census Population Count

(resident population for 50 states, and DC)

331,449,281

2020 Census Environment



Impacts of the Census

United States[®]
Census 2020 | **Shape Your Future. START HERE.** 

What Does the Census Mean for My Community?
The Census is a count of everyone residing in the U.S. every 10 years. Accurate reporting is critical in determining funding for communities like ours.

Fair Representation
Determines U.S. House of Representatives seats.

Emergency Response
Helps allocate disaster resources.

Program Funding
Determines funding for programs like Medicaid and school lunches.

Your Health
Helps hospitals and communities predict the spread of diseases.

Infrastructure
Drives decisions for housing, safety resources and community improvements.

 By law, Census responses are private and cannot be shared with anyone, including other Federal agencies and law enforcement.

The 2020 Census Operational Overview



ESTABLISH WHERE TO COUNT

Identify all addresses
where people could live.



MOTIVATE PEOPLE TO RESPOND

Conduct a nationwide
communications and
partnership campaign.



COUNT THE POPULATION

Collect data from all
households, including
group and unique living
arrangements.



RELEASE CENSUS RESULTS

Process and provide Census data.

The 2020 Census Program

35 Operations!



Data Collection Operations

Self Response Enumeration (paper, internet, phone)	Nonresponse Followup Enumeration (in-person, iPhone)	“Special Place” Enumeration (multiple modes)	Coverage Improvement Followup (phone)
--	--	--	---

Pandemic Challenges

- Delay in Enumeration
- Hiring shortages
- Closure of Group Quarters
- Delay in Data Capture
- Compressed Data Processing Timeline

Self-Response Enumeration

Internet Self Response (ISR) – 53.5%

- First Census in which ISR was an option for all respondents

Individual Census Questionnaire (paper)

Census Questionnaire Assistance (phone)

Census Questionnaire Assistance (telephone)

- Answer questions about the 2020 Census over the phone
- Complete Census enumeration over the phone



The 2020 Census: Planned Contact Strategy

Internet First – 80%

- 1 Letter
- 2 Letter
- 3* Postcard
- 4* Paper Questionnaire + Letter
- 5* “It’s not too late” Postcard

Internet Choice – 20%

- 1 Paper Questionnaire + Letter
- 2 Letter
- 3* Postcard
- 4* Paper Questionnaire + Letter
- 5* “It’s not too late” Postcard

Nonresponse Follow-up Enumeration



Nonresponse Follow-Up Enumeration sent enumerators to the doors of non-responding households and collected the responses.

Coverage Improvement Follow-up (telephone)

Attempt to follow up where there are potential coverage issues:

- Count discrepancies on form
- Unduplication

“Special Place” Enumeration (multiple modes)

- **Group Quarters**
- **Maritime Vessel**
- **Enumeration of transitory locations (boats, RVs)**
- **Service-Based Enumeration**



Group Quarter enumeration modes

- Electronic response
- Drop off/pick up
- In person, using paper
- Paper listing
- Facility self enumeration



Maritime Vessel enumeration mode

- Mail out/Mail back



Transitory Location mode

- In person/paper



Service Based Enumeration Modes

- In person enumeration/paper
- Paper listing

Data Processing

- Variable Standardization
- Unduplication
- Count Imputation
- Edits and Characteristic Imputation
- Disclosure Avoidance
- Tabulation

How to Learn More

[2020 Census Operational Plan and Detailed Operational Plans](#)

2020 Census Operational Plan

A New Design for the 21st Century

Issued December 2018
Version 4.0



United States[®]
Census

U.S. Department of Commerce
Economics and Statistics Administration
U.S. CENSUS BUREAU

United States[®]
**Census
2020**

**your future
START HERE >**

United States[®]
**Census
2020**

Questions



For More Information Contact

Erin Hutcheson

Population Division

erin.m.hutcheson@census.gov

