



Machine learning Group 2022 – Activity Proposal

Port Area Identification

Joseph Crispell
ONS-FCDO data science hub



Foreign, Commonwealth
& Development Office



Data Science
Campus

AIS LOCATIONS SERVICE

STEALTH | Official Statistics Location Service v3.11.0

Layer Manager

CONTEXT

- Airports
- Buildings
- EEZ
- Weather

DATA

- ADS-B Exchange (Historical)
- ExactEarth (Historical)
- Orbcomm (Historical)

TIME-ENABLED

Live Refresh: 10 s

- ADS-B Exchange (Live)
- ExactEarth (Live)
- Orbcomm (Live)

Time-lapse

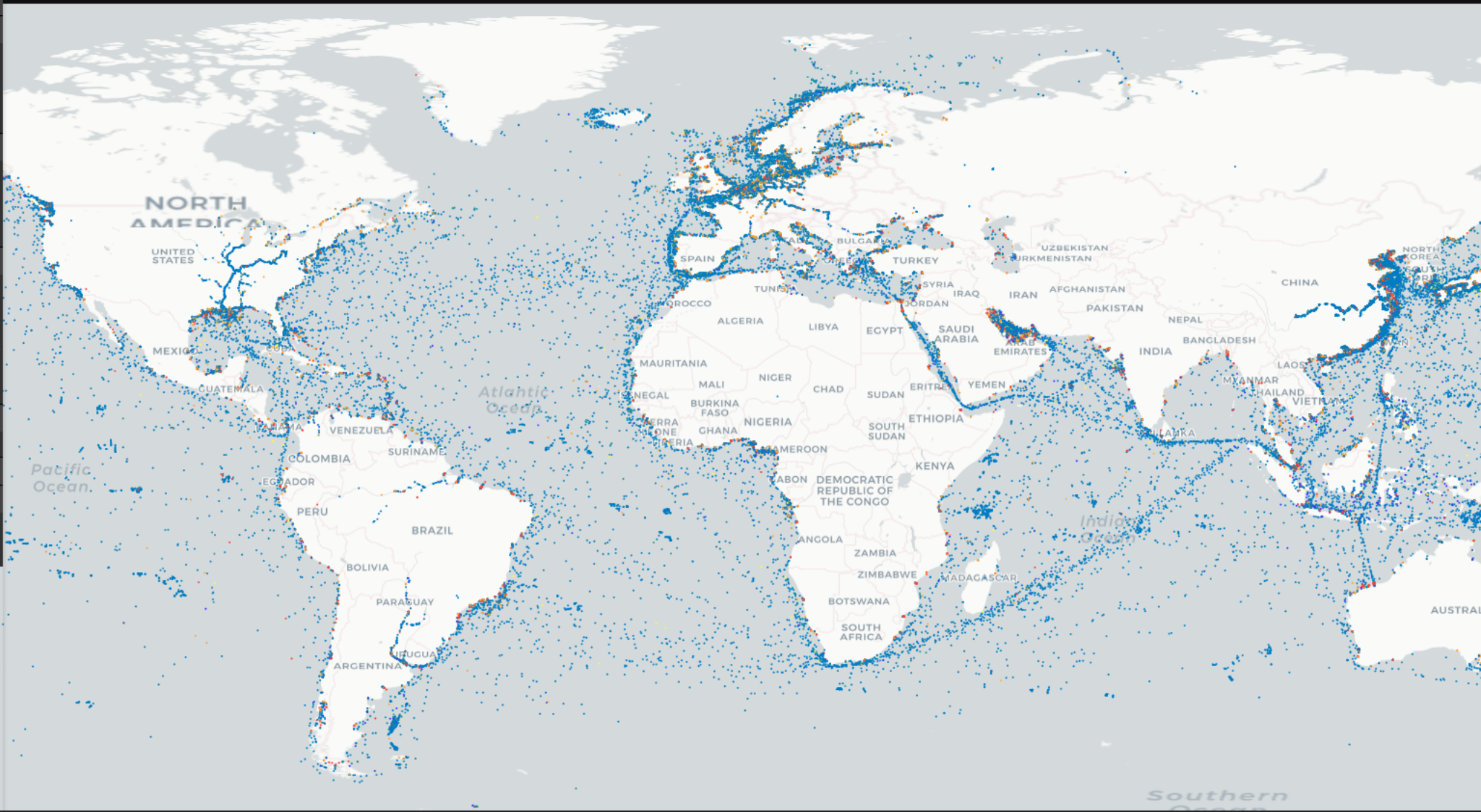
IMPORTED FEATURES

Add File

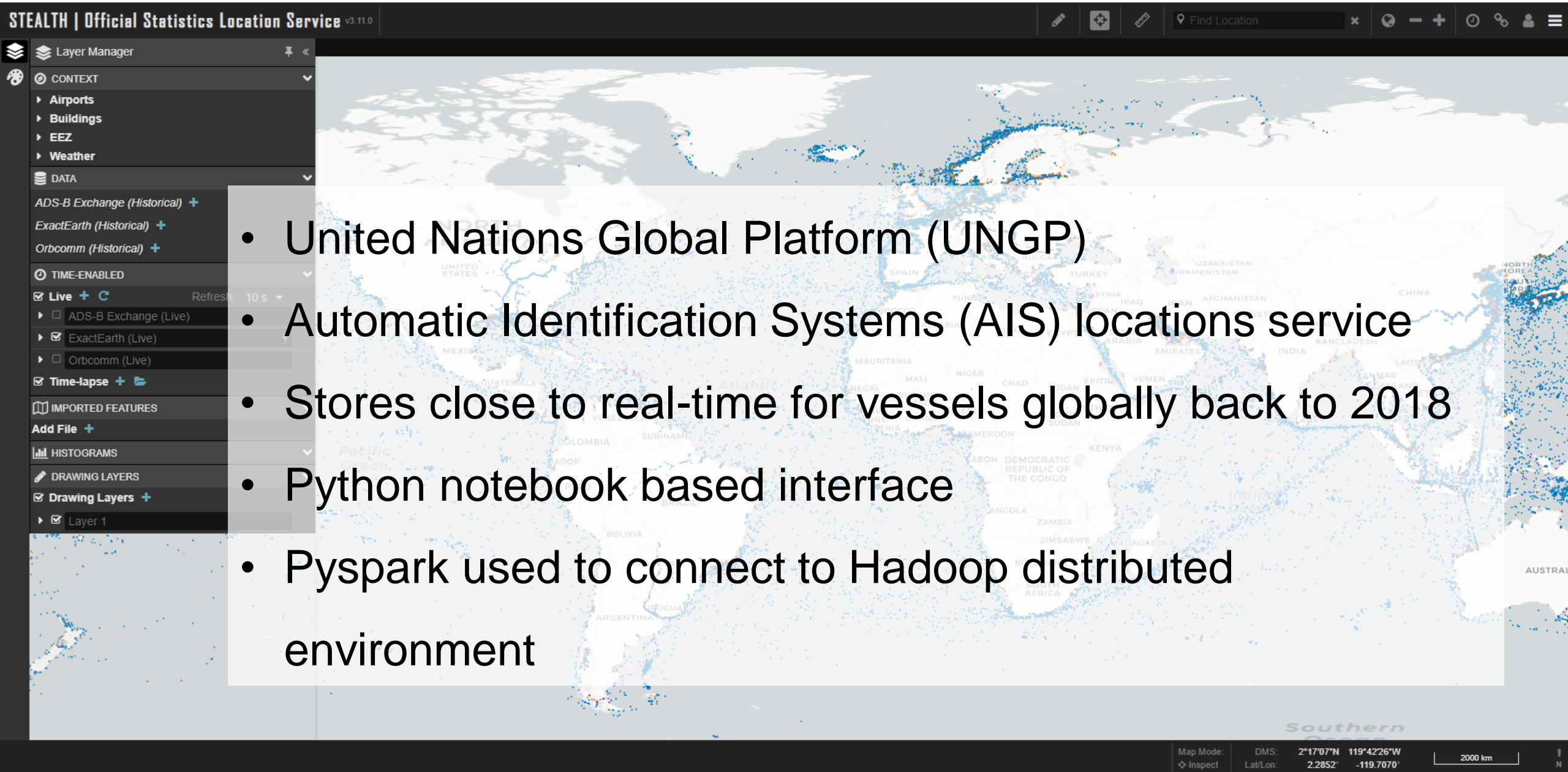
HISTOGRAMS

DRAWING LAYERS

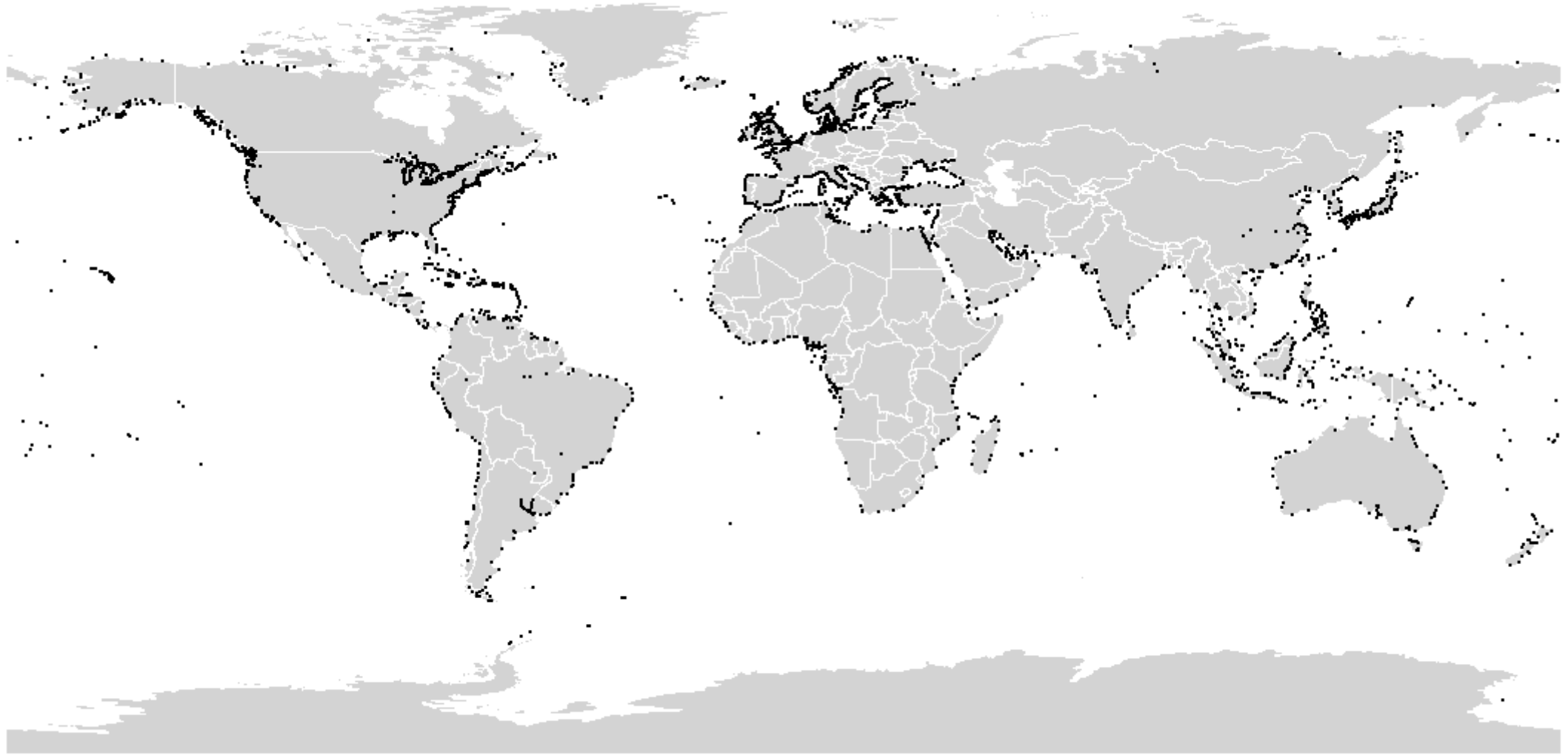
- Drawing Layers**
- Layer 1



AIS LOCATIONS SERVICE



WORLD PORT INDEX

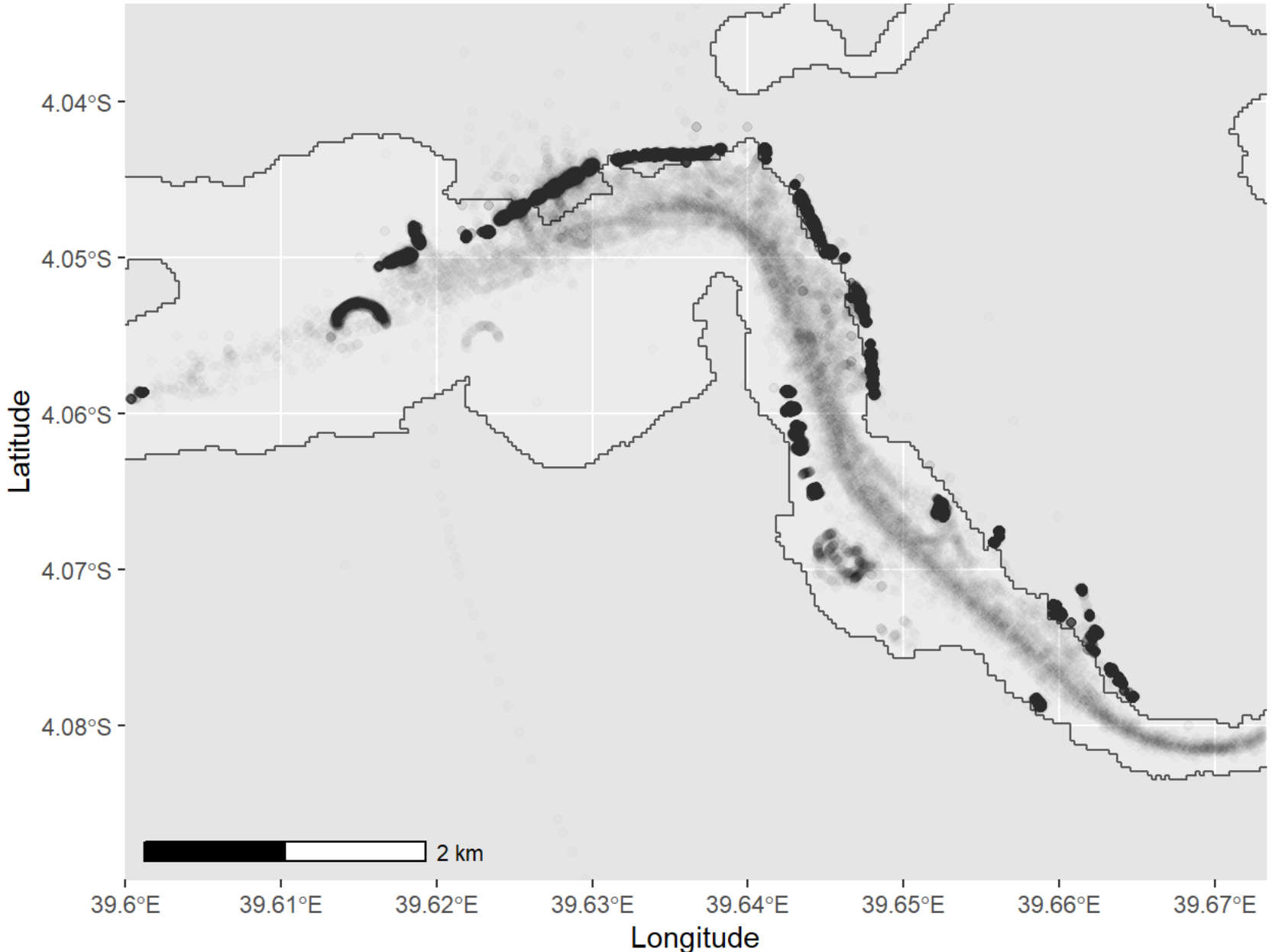


<https://msi.nga.mil/Publications/WPI>

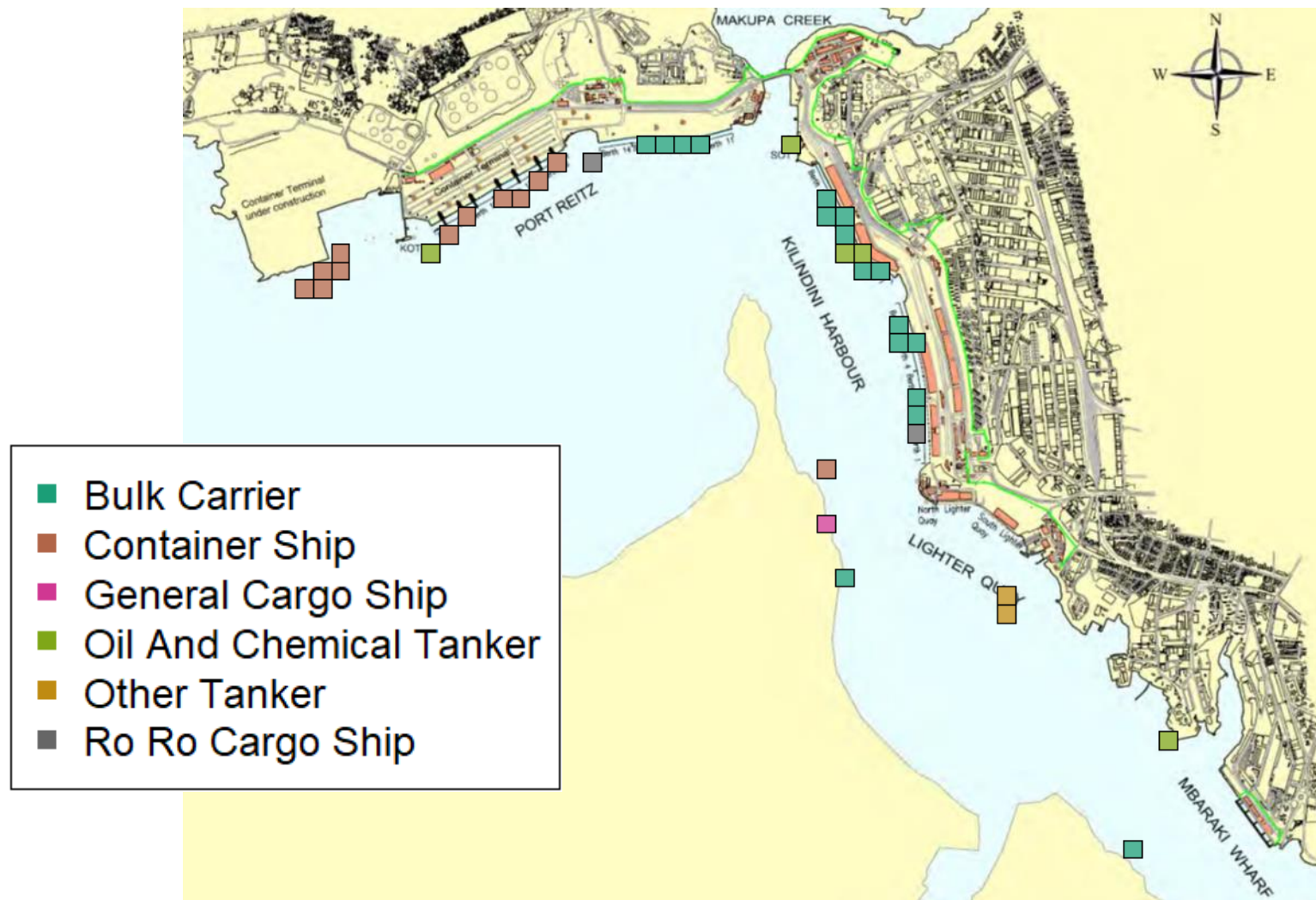
PORT MOMBASA



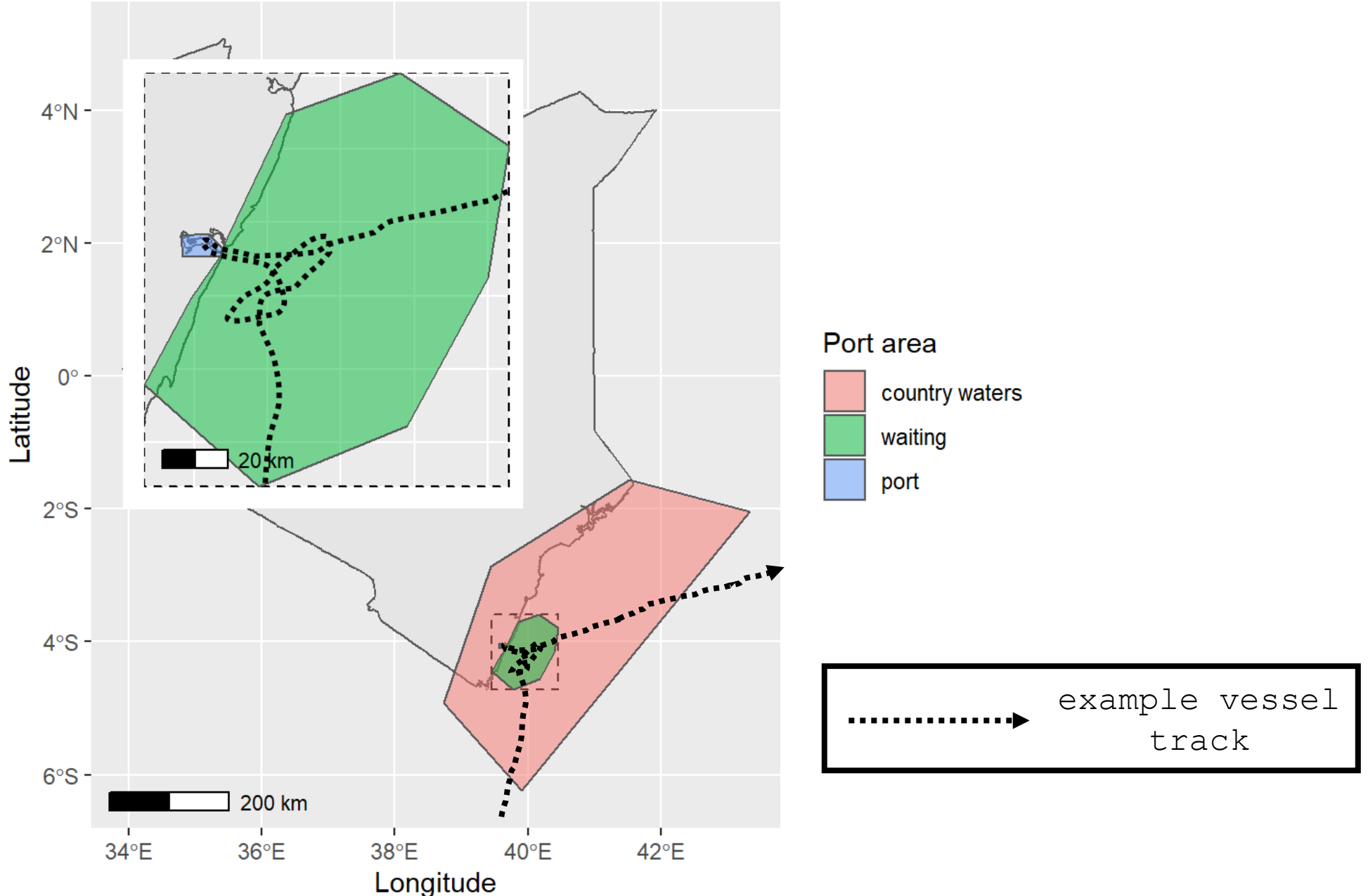
ACTIVITY 2: IDENTIFY BERTH AREAS



AUTOMATED BERTH DETECTION



ACTIVITY 3: IDENTIFY WAITING AREAS



ORGANISATION

- Collaboration between:
 - AIS task team
 - Users that can provide insights for selected ports and validate outputs
 - Maintainers that can integrate outputs into UNGP
 - UNECE ML group 2022 – ML expertise
 - ONS-FCDO data science hub – data scientists

REQUIREMENTS

- 6-8 months potentially kicking off in April
- Experience:
 - Python programming
 - Knowledge of range of machine learning approaches
 - Time to familiarise with UNGP and



THANKS EVERYONE!

