

# MACHINE LEARNING FOR OFFICIAL STATISTICS

How to advance the use of machine learning (ML) for the production of official statistics?  
Here are the key messages from UNECE HLG-MOS Machine Learning Project Report for ML to be accepted and further facilitated in statistical organisation.

For the full report, visit UNECE Statistics wiki: <https://statswiki.unece.org/x/wg4AEQ>

## KEY FOR ACCEPTANCE

### ALIGNMENT WITH BUSINESS NEEDS

ML is a means to an end, focus on what it can do to better address business needs



### DEMONSTRATION OF ADDED VALUE

Look to ML to first improve existing operations, not to replace them



### RESPECT OF ETHICAL AND LEGAL CONSIDERATION

ML models can have a significant impact on the life of individuals

### DEVELOPMENT ON SOLID SCIENTIFIC GROUNDS

ML relies on many scientific, technical and operational disciplines

### ROBUST PERFORMANCE OVER TIME

ML must be maintained to improve as it continues to learn



### GUIDANCE FROM QUALITY FRAMEWORK

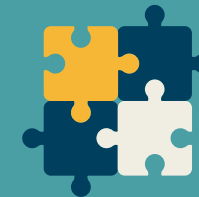
ML must contribute better-quality results towards fulfilling business needs



## KEY FOR FACILITATION

### ENGAGEMENT FROM ALL EMPLOYEES

Employees in all functions and levels play a role in advancing the use of ML



### RESEARCH AND DEVELOPMENT

R&D is essential to address business needs and drive innovation strategies



### COMBINATION OF MULTI-DISCIPLINARY SKILLS

The success of ML strongly relies on a team effort

### SENIOR MANAGEMENT SUPPORT

ML feeds on corporate-wide modernisation and innovation strategies

### SHARING AND COLLABORATION

Organisations working together will efficiently advance ML and avoid pitfalls



### COMPUTING INFRASTRUCTURE

ML must be included in corporate digitalisation strategies

