

Table of Contents

Model Detail	4
Model	4
Base	4
AdministrativeDetails	5
Agent	6
AgentRole	6
IdentifiableArtefact	7
Individual	8
Organisation	9
Business	9
Assessment	14
BusinessCase	16
BusinessFunction	18
BusinessProcess	19
BusinessService	20
ChangeDefinition	21
EnvironmentChange	22
InformationRequest	24
ProcessControl	25
ProcessControlDesign	26
ProcessDesign	27
ProcessInput	28
ProcessInputSpecification	29
ProcessMethod	30
ProcessOutput	31
ProcessOutputSpecification	32
ProcessPattern	33
ProcessStep	34
ProcessStepInstance	35
Rule	36
StatisticalNeed	37
StatisticalProgram	39
StatisticalProgramCycle	41
StatisticalProgramDesign	42
StatisticalSupportProgram	44
Concepts	46
Category	52
CategoryItem	53
CategorySet	53
ClassificationFamily	54
ClassificationIndex	55
ClassificationIndexEntry	56
ClassificationItem	58

ClassificationSeries	62
Code	63
CodeItem	64
CodeList	64
CodeVale	65
Concept	66
ConceptSystem	67
ConceptualDomain	68
CorrespondenceTable	68
Datum	71
DescribedConceptualDomain	71
DescribedValueDomain	72
Designation	73
EnumeratedConceptualDomain	73
EnumeratedValueDomain	74
InstanceVariable	75
Level	76
Map	78
Node	79
NodeSet	80
Population	82
RepresentedVariable	84
Sign	85
StatisticalClassification	85
SubjectField	90
Unit	91
UnitType	92
ValueDomain	92
Variable	93
Exchange	94
AdministrativeRegister	97
Control	97
Dimension	98
ExchangeChannel	99
InformationConsumer	100
InformationProvider	101
InstanceQuestion	102
InstanceQuestionBlock	102
InstanceStatement	103
Instruction	104
OutputSpecification	104
Presentation	105
Product	106
Protocol	107
ProvisionAgreement	107
Question	108

QuestionBlock	109
QuestionGrid	110
QuestionItem	111
Questionnaire	111
QuestionnaireComponent	113
QuestionnaireLogic	114
QuestionnaireSpecification	115
Scraping Process Map	116
Statement	117
StatementItem	118
WebScraperChannel	118
TypeOfSequence	119
Source	120
BDMSerie	121
StatisticalStudy	122
StudyFamily	125
StudySerie	126
Structures	128
AttributeComponent	131
DataPoint	131
DataResource	132
DataSet	133
DataStructure	134
DataStructureComponent	135
DimensionalDataPoint	136
DimensionalDataSet	137
DimensionalDataStructure	137
IdentifierComponent	138
InformationResource	138
InformationSet	139
LogicalRecord	140
MeasureComponent	141
RecordRelationship	141
ReferentialMetadataAttribute	142
ReferentialMetadataContentItem	143
ReferentialMetadataResource	144
ReferentialMetadataSet	144
ReferentialMetadataStructure	145
ReferentialMetadataSubject	146
ReferentialMetadataSubjectItem	147
UnitDataPoint	147
UnitDataRecord	148
UnitDataSet	148
UnitDataStructure	149

Model Documentation

Model Detail

This document provides a complete overview of all element details. For simpler and more focused reports, simply copy this initial template and turn off the sections not required.

Model

Type: **Package**
Status: Proposed. Version . Phase 1.0.
Package:
Detail: Created on 08/10/2014. Last modified on 08/10/2014
GUID: {A5D53645-A125-4dee-8453-4E1AD32A83AF}

Base

Type: **Package**
Status: Proposed. Version 1.0. Phase 1.0.
Package: Model
Detail: Created on 05/12/2013. Last modified on 05/12/2013
GUID: {86DE3E7F-B5BA-4879-B6CB-98F82130B88B}

Identity_Admin_Details - (Class diagram)

Created By: Chris on 16/12/2013
Last Modified: 29/12/2013
Version: 1.0. *Locked:* False
GUID: {4EE38A00-5329-41fb-AA7F-404ED9B3FD96}

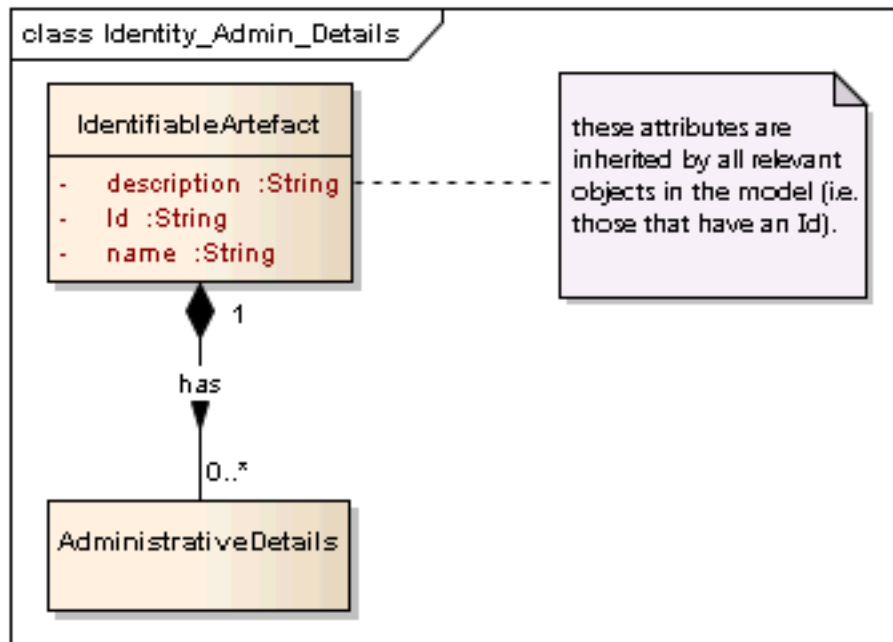


Figure: 1

Information_Providers_Consumers_Organizations_Individuals - (Class diagram)

Created By: Chris on 05/12/2013
 Last Modified: 29/12/2013
 Version: 1.0. Locked: False
 GUID: {21B5E79D-899C-4edf-8FCA-6BEA7DC10E21}

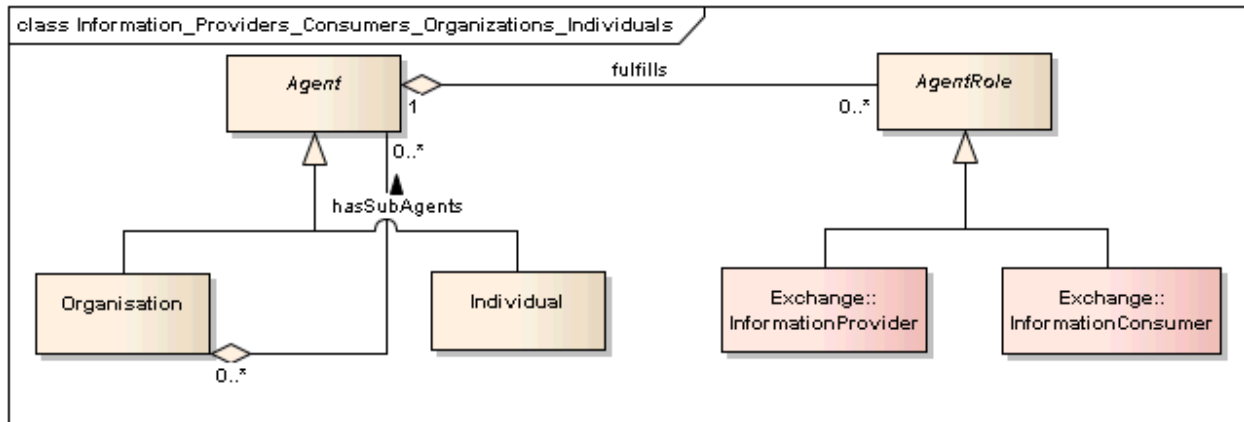


Figure: 2

AdministrativeDetails

Type: **Class**
 Status: Proposed. Version 1.0. Phase 1.0.
 Package: Base **Keywords:**
 Detail: Created on 05/12/2013. Last modified on 27/12/2013.
 GUID: {59C1E829-A262-482f-B343-91520E7A7F1F}

Definition: A placeholder for extensions to the model based on an organisation's administrative needs.

Explanatory Text: The Administrative Details object is designed to act as a 'placeholder' to allow for future extensions to the existing model. It allows for further information to be added about the administrative details required to maintain the other objects outlined by GSIM.

Custom Properties

- isActive = False

Connections

Connector	Source	Target	Notes
Aggregation has Source -> Destination	Public AdministrativeDetails	Public IdentifiableArtefact	

Agent

Type: **Class**
Status: Proposed. Version 1.0. Phase 1.0.
Package: Base **Keywords:**
Detail: Created on 05/12/2013. Last modified on 17/12/2013.
GUID: {B0DAE3B3-70FD-4ea5-AC89-5C709E66B50E}

Definition: An actor that performs a role in relation to the statistical Business Process.

Explanatory Text: An Agent may be either an Organization or an Individual. An Organization may be an entire organization or entities within a larger organization, such as departments or divisions. An Organization may have sub Agents, which may be either other Organizations within the parent Organization or Individuals that belong to that Organization.

Custom Properties

- isActive = False

Connections

Connector	Source	Target	Notes
Generalization Source -> Destination	Public Organisation	Public Agent	
Generalization Source -> Destination	Public Individual	Public Agent	
Aggregation fulfills Source -> Destination	Public AgentRole	Public Agent	
Aggregation hasSubAgents Unspecified	Public Agent	Public Organisation	

AgentRole

Type: **Class**
Status: Proposed. Version 1.0. Phase 1.0.
Package: Base **Keywords:**
Detail: Created on 05/12/2013. Last modified on 17/12/2013.
GUID: {4CC7DBBB-08EE-4605-BD3C-6D19A4D2B8A8}

Definition: The function or activities of an Agent, in regard to their involvement in the statistical Business Process.

Explanatory Text: An Agent Role may apply to either type of Agent - an Organization or Individual. A common example would be to identify which individuals or departments within an organisation provide administrative data.

Custom Properties

- isActive = False

Connections

Connector	Source	Target	Notes
Generalization Source -> Destination	Public InformationProvider	Public AgentRole	
Generalization Source -> Destination	Public InformationConsumer	Public AgentRole	
Aggregation fulfills Source -> Destination	Public AgentRole	Public Agent	

IdentifiableArtefact

Type: **Class**

Status: Proposed. Version 1.0. Phase 1.0.

Package: Base *Keywords:*

Detail: Created on 05/12/2013. Last modified on 27/12/2013.

GUID: {410E8F29-767C-4b6b-8887-0104F1521D52}

Definition: An abstract class that comprises the basic attributes and associations needed for identification, naming and other documentation.

Explanatory Text: An instance of any GSIM information object is an Identifiable Artefact.

Custom Properties

- isActive = False

Connections

Connector	Source	Target	Notes
NoteLink Source -> Destination	Public <anonymous>	Public IdentifiableArtefact	
Aggregation basedUpon Unspecified	Public IdentifiableArtefact	Public ChangeDefinition	
Aggregation has Source -> Destination	Public AdministrativeDetails	Public IdentifiableArtefact	
Aggregation hasInput Source -> Destination	Public IdentifiableArtefact	Public Assessment	
Aggregation references Source -> Destination	Public IdentifiableArtefact	Public ProcessInput	

Connector	Source	Target	Notes
Aggregation references Source -> Destination	Public IdentifiableArtefact	Public ProcessOutput	
Aggregation ResultsIn Unspecified	Public IdentifiableArtefact	Public ChangeDefinition	

Attributes

Attribute	Notes	Constraints and tags
description String Private		<i>Default:</i>
Id String Private		<i>Default:</i>
name String Private		<i>Default:</i>

Individual

Type:

Class Agent

Status:

Proposed. Version 1.0. Phase 1.0.

Package:

Base *Keywords:*

Detail:

Created on 05/12/2013. Last modified on 17/12/2013.

GUID:

{21667E67-ED3A-404d-948B-50D76EDD5467}

Definition: A person who acts, or is designated to act towards a specific purpose.

Custom Properties

- isActive = False

Connections

Connector	Source	Target	Notes
Generalization Source -> Destination	Public Individual	Public Agent	

Organisation

Type: **Class** Agent

Status: Proposed. Version 1.0. Phase 1.0.

Package: Base *Keywords:*

Detail: Created on 05/12/2013. Last modified on 06/10/2014.

GUID: {546DEA25-5528-4853-B763-ED173A7A58C6}

Definition: A unique framework of authority within which a person or persons act, or are designated to act, towards some purpose.

Custom Properties

- isActive = False

Connections

Connector	Source	Target	Notes
Generalization Source -> Destination	Public Organisation	Public Agent	
Aggregation hasSubAgents Unspecified	Public Agent	Public Organisation	
Association isResponsibleFor Source -> Destination	Public Organisation	Public StudyFamily	
Association isResponsibleFor Source -> Destination	Public Organisation	Public StudySerie	

Business

Type: **Package**

Status: Proposed. Version 1.0. Phase 1.0.

Package: Model

Detail: Created on 05/12/2013. Last modified on 05/12/2013

GUID: {9711AC01-D0D5-4bd1-952F-5B8A5ABEFC83}

Design Processes Reusable - (Class diagram)

Created By: Chris on 05/12/2013

Last Modified: 29/12/2013

Version: 1.0. *Locked:* False

GUID: {0F0146C4-1407-4e5e-AFFA-C3DC7ADEF02B}

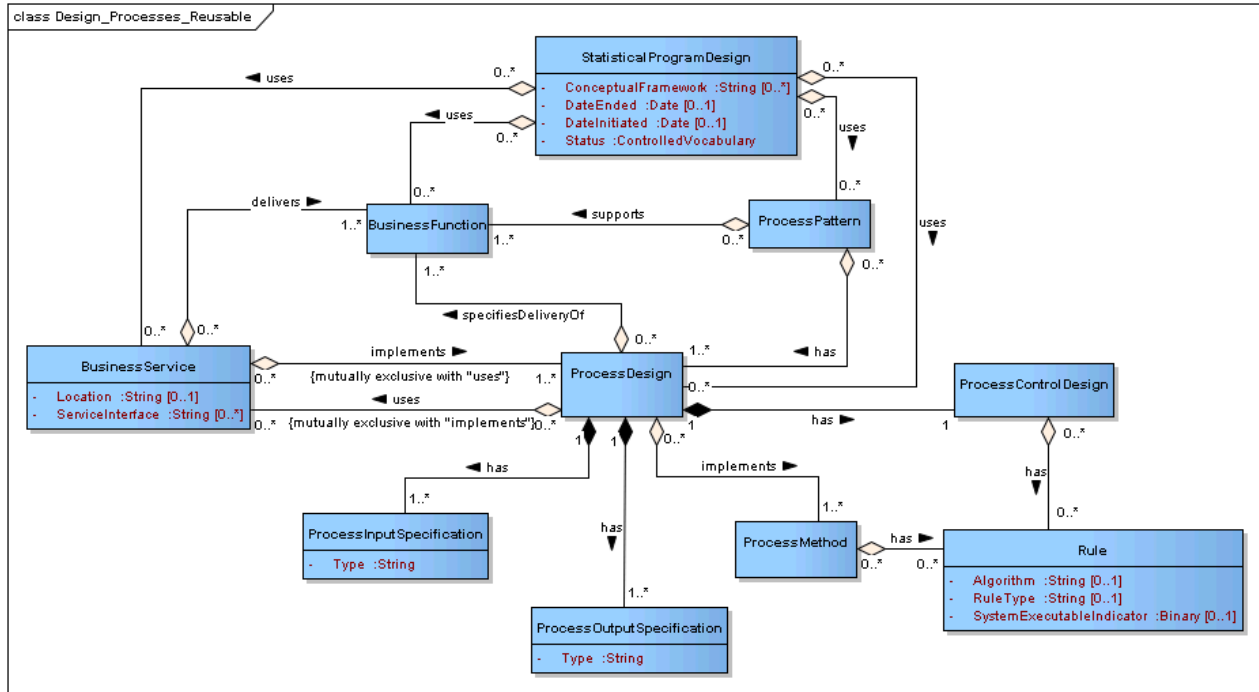


Figure: 3

Design Processes Traditional - (Class diagram)

Created By: Chris on 10/12/2013

Last Modified: 29/12/2013

Version: 1.0. *Locked:* False

GUID: {DABDF780-206E-4892-9BA3-7980316851EB}

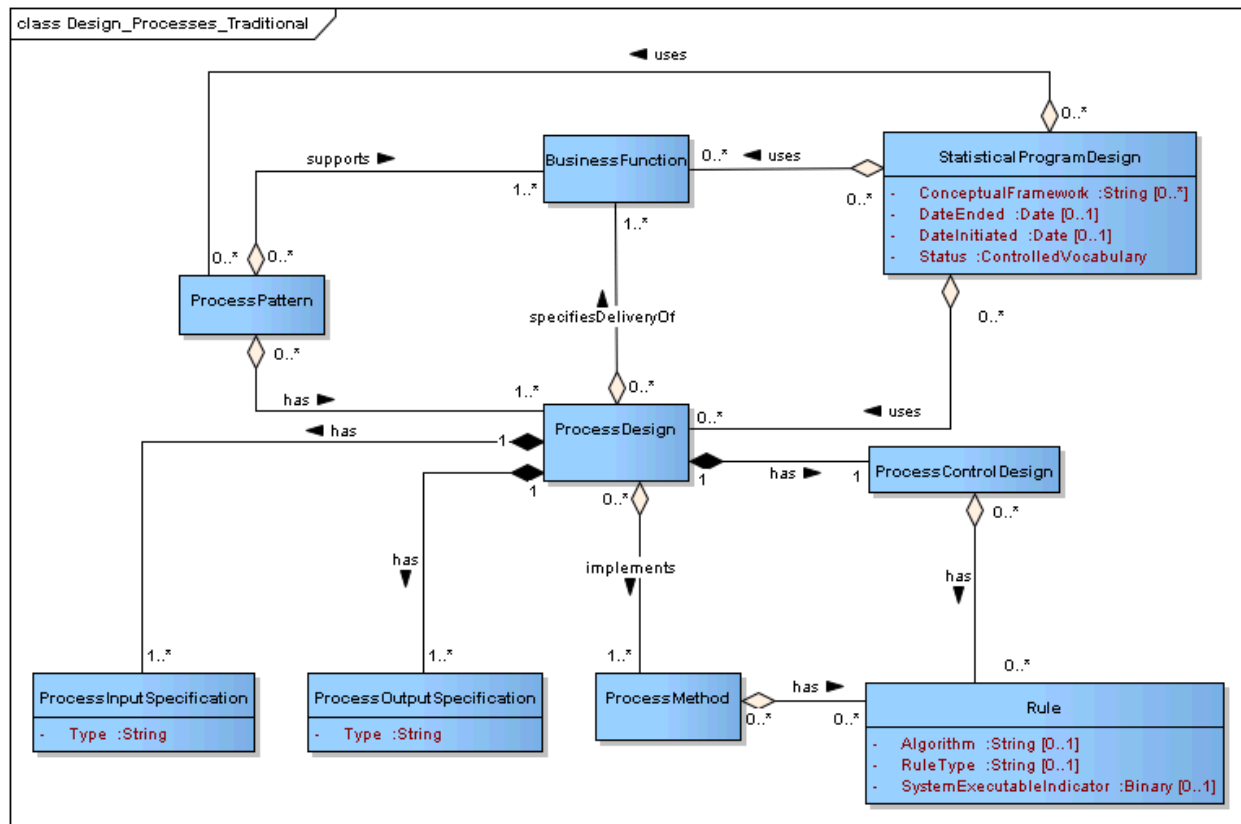


Figure: 4

Design and Manage Statistical Program - (Class diagram)

Created By: Chris on 05/12/2013

Last Modified: 29/12/2013

Version: 1.0. *Locked:* False

GUID: {1FD0BEB4-D156-4017-A46E-F3A56699DAF1}

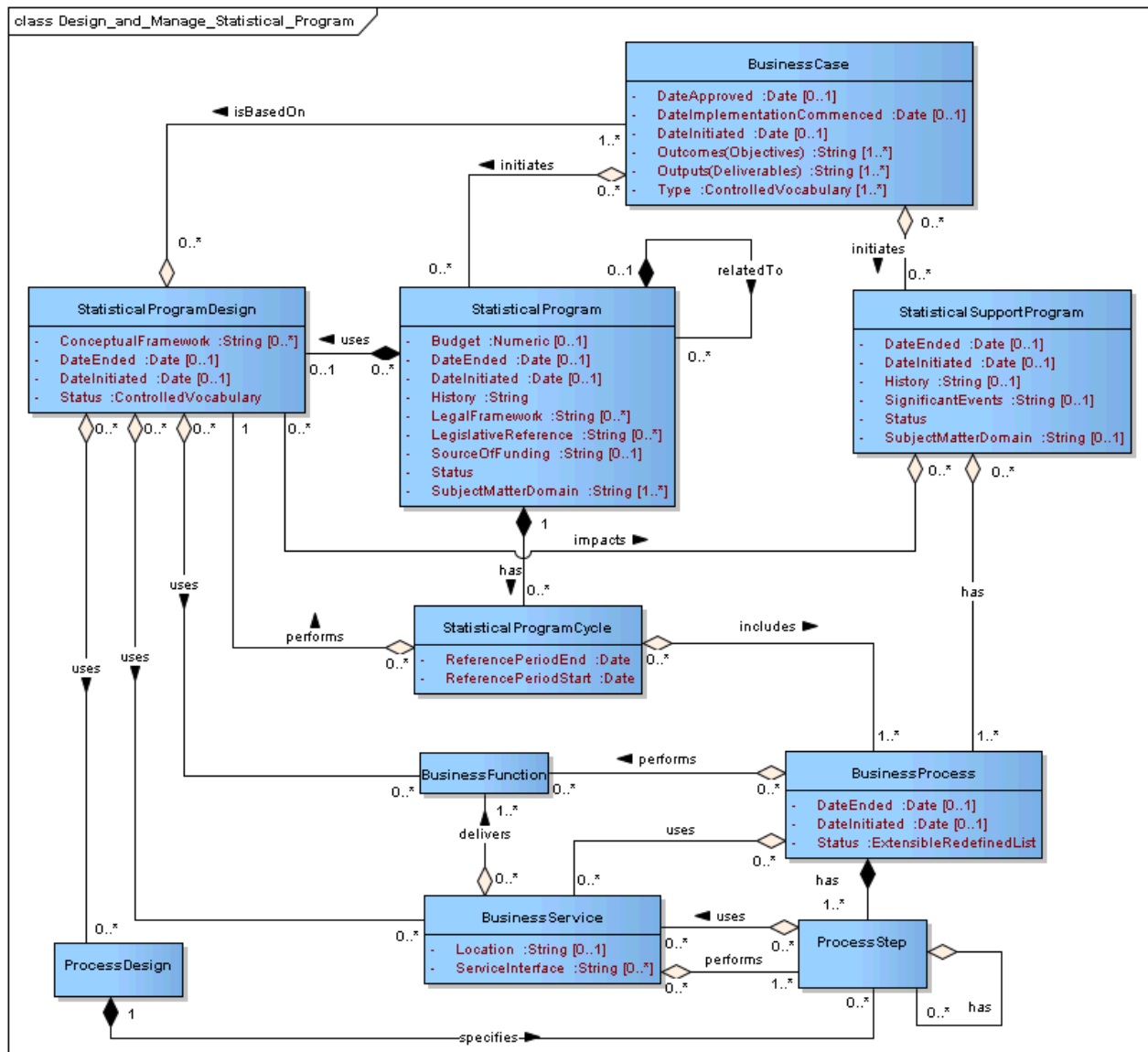


Figure: 5

Identify Evaluate Statistical Need - (Class diagram)

Created By: Chris on 11/12/2013

Last Modified: 29/12/2013

Version: 1.0. *Locked:* False

GUID: {735BFD06-05DE-4ccc-AA96-6316F9B7EBC3}

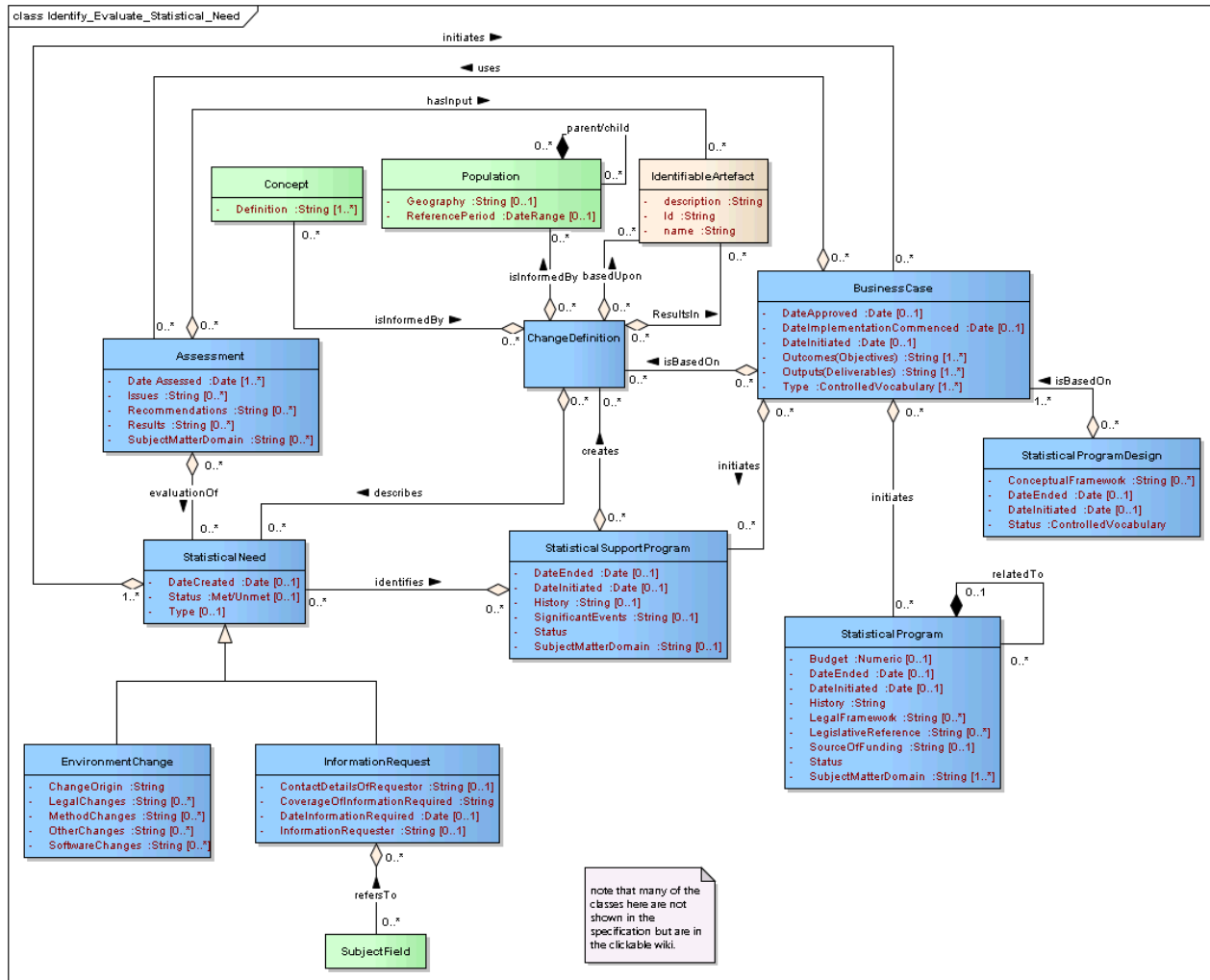


Figure: 6

Run_Processes - (Class diagram)

Created By: Chris on 05/12/2013

Last Modified: 29/12/2013

Version: 1.0. Locked: False

GUID: {F3226C69-78D0-4cbc-BD8A-61F3B606B624}

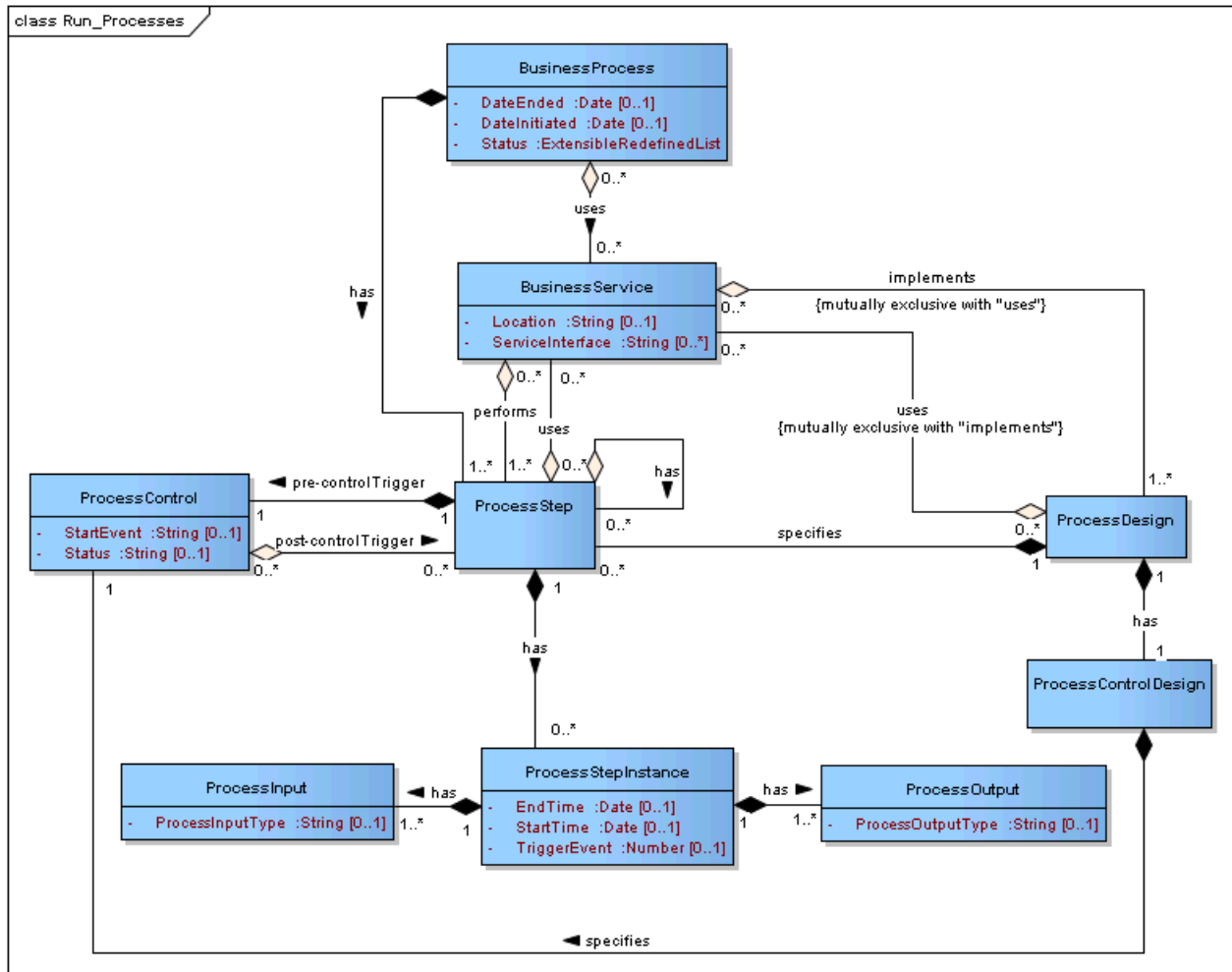


Figure: 7

Assessment

Type: Class
Status: Proposed. Version 1.1. Phase 1.0.
Package: Business *Keywords:*
Detail: Created on 11/12/2013. Last modified on 27/12/2013.
GUID: {13C61424-9D2B-4e17-B37F-6FD2EA7C411B}

Definition: The result of the analysis of the quality and effectiveness of any activity undertaken by a statistical organization and recommendations on how these can be improved.

Explanatory Text: An Assessment can be of a variety of types. One example may include a gap analysis, where a current state is determined along with what is needed to reach its target state. Alternately, an Assessment may compare current processes against a set of requirements, for example a new Statistical Need or change in the operating environment.

An Assessment can use various information objects as inputs, whether they are the main objects that the Assessment is about or auxiliary information objects that help accomplish the Assessment.

Custom Properties

- isActive = False

Connections

Connector	Source	Target	Notes
Aggregation evaluationOf Source -> Destination	Public StatisticalNeed	Public Assessment	
Aggregation hasInput Source -> Destination	Public IdentifiableArtefact	Public Assessment	
Aggregation uses Source -> Destination	Public Assessment	Public BusinessCase	

Attributes

Attribute	Notes	Constraints and tags
Date Assessed Date Private [1..*]		<i>Default:</i>
Issues String Private [0..*]		<i>Default:</i>
Recommendations String Private [0..*]		<i>Default:</i>
Results String Private [0..*]		<i>Default:</i>
SubjectMatterDomain		<i>Default:</i>

Attribute	Notes	Constraints and tags
String Private [0..*]		

BusinessCase

Type: **Class**

Status: Proposed. Version 1.0. Phase 1.0.

Package: Business *Keywords:*

Detail: Created on 10/12/2013. Last modified on 17/12/2013.

GUID: {423BA88F-5FB6-4c8d-AE27-29947D44EB7F}

Definition: A proposal for a body of work that will deliver outputs designed to achieve outcomes. A Business Case will provide the reasoning for undertaking a Statistical Support Program to initiate a new Statistical Program Design for an existing Statistical Program, or an entirely new Statistical Program, as well as the details of the change proposed.

Explanatory Text: A Business Case is produced as a result of a detailed consideration of a Change Definition. It sets out a plan for how the change described by the Change Definition can be achieved. A Business Case usually comprises various evaluations. The Business Case will specify the stakeholders that are impacted by the Statistical Need or by the different solutions that are required to implement it.

Custom Properties

- isActive = False

Connections

Connector	Source	Target	Notes
Aggregation initiates Source -> Destination	Public StatisticalProgram	Public BusinessCase	
Aggregation initiates Source -> Destination	Public StatisticalSupportProgram	Public BusinessCase	
Aggregation initiates Source -> Destination	Public BusinessCase	Public StatisticalNeed	
Aggregation isBasedOn Source -> Destination	Public BusinessCase	Public StatisticalProgramDesign	
Aggregation isBasedOn Unspecified	Public ChangeDefinition	Public BusinessCase	
Aggregation uses	Public	Public	

Connector	Source	Target	Notes
Source -> Destination	Assessment	BusinessCase	

Attributes

Attribute	Notes	Constraints and tags
DateApproved Date Private [0..1]		<i>Default:</i>
DateImplementationCom menced Date Private [0..1]		<i>Default:</i>
DateInitiated Date Private [0..1]		<i>Default:</i>
Outcomes(Objectives) String Private [1..*]		<i>Default:</i>
Outputs(Deliverables) String Private [1..*]		<i>Default:</i>
Type ControlledVocabulary Private [1..*]	e.g. new program, permanent (indefinite) change to existing program, temporary change to existing program, cease program	<i>Default:</i>

Attribute	Notes	Constraints and tags

BusinessFunction

Type: Class
Status: Proposed. Version 1.0. Phase 1.0.
Package: Business *Keywords:*
Detail: Created on 10/12/2013. Last modified on 17/12/2013.
GUID: {EB123DE1-9DA7-4186-ACD5-5F1112F0C508}

Definition: Something an enterprise does, or needs to do, in order to achieve its objectives.

Explanatory Text: A Business Function delivers added value from a business point of view. It is delivered by bringing together people, processes and technology (resources), for a specific business purpose.

Business Functions answer in a generic sense "What business purpose does this Business Service or Process Step serve?" Through identifying the Business Function associated with each Business Service or Process Step it increases the documentation of the use of the associated Business Services and Process Steps, to enable future reuse.

A Business Function may be defined directly with descriptive text and/or through reference to an existing catalogue of Business Functions. The phases and sub processes defined within GSBPM can be used as an internationally agreed basis for cataloguing high level Business Functions. A catalogue might also include Business Functions defined at a lower level than "sub process". For example, "Identify and address outliers" might be catalogued as a lower level Business Function with the "Review, validate and edit" function (5.3) defined within GSBPM.

Custom Properties

- isActive = False

Connections

Connector	Source	Target	Notes
Aggregation delivers Source -> Destination	Public BusinessFunction	Public BusinessService	
Aggregation performs Source -> Destination	Public BusinessFunction	Public BusinessProcess	
Aggregation specifiesDeliveryOf Source -> Destination	Public BusinessFunction	Public ProcessDesign	
Aggregation supports Source -> Destination	Public BusinessFunction	Public ProcessPattern	
Aggregation uses Source -> Destination	Public BusinessFunction	Public StatisticalProgramDesi gn	

BusinessProcess

Type: **Class**
Status: Proposed. Version 1.0. Phase 1.0.
Package: Business **Keywords:**
Detail: Created on 10/12/2013. Last modified on 29/12/2013.
GUID: {EA4378F3-F3CF-42b4-9EDF-4D3AC291D052}

Definition: The set of Process Steps to perform one of more Business Functions to deliver a Statistical Program Cycle or Statistical Support Program.

Explanatory Text: For example, a particular Statistical Program Cycle might include several data collection activities, the corresponding editing activities for each collection and the production and dissemination of final outputs. Each of these may be considered separate Business Processes for the Statistical Program Cycle.

Custom Properties

- isActive = False

Connections

Connector	Source	Target	Notes
Aggregation has Source -> Destination	Public ProcessStep	Public BusinessProcess	
Aggregation has Source -> Destination	Public BusinessProcess	Public StatisticalSupportProgram	
Aggregation includes Source -> Destination	Public BusinessProcess	Public StatisticalProgramCycle	
Aggregation performs Source -> Destination	Public BusinessFunction	Public BusinessProcess	
Aggregation uses Source -> Destination	Public BusinessService	Public BusinessProcess	

Attributes

Attribute	Notes	Constraints and tags
DateEnded Date Private [0..1]	Last date of validity	<i>Default:</i>
DateInitiated Date	First date of validity	<i>Default:</i>

Attribute	Notes	Constraints and tags
Private [0..1]		
Status ExtensibleRedefinedList Private		<i>Default:</i>

BusinessService

Type: **Class**
Status: Proposed. Version 1.0. Phase 1.0.
Package: Business *Keywords:*
Detail: Created on 10/12/2013. Last modified on 29/12/2013.
GUID: {477565DA-A117-4931-BB1A-0B2B572DFD67}

Definition: A means of performing a Business Function (an ability that an organization possesses, typically expressed in general and high level terms and requiring a combination of organization, people, processes and technology to achieve).

Explanatory Text: A Business Service may provide one means of accessing a particular Business Function. The operation of a Business Service will perform one or more Business Processes.

The explicitly defined interface of a Business Service can be seen as representing a "service contract". If particular inputs are provided then the service will deliver particular outputs in compliance within specific parameters (for example, within a particular period of time).

Note: The interface of a Business Service is not necessarily IT based. For example, a typical postal service will have a number of service interfaces:

- Public letter box for posting letters
- Counter at post office for interacting with postal workers

Custom Properties

- isActive = False

Connections

Connector	Source	Target	Notes
Aggregation delivers Source -> Destination	Public BusinessFunction	Public BusinessService	

Connector	Source	Target	Notes
Aggregation implements Source -> Destination	Public ProcessDesign	Public BusinessService	<u>Invariant</u> {mutually exclusive with "uses"}
Aggregation performs Source -> Destination	Public ProcessStep	Public BusinessService	
Aggregation uses Source -> Destination	Public BusinessService	Public StatisticalProgramDesi gn	
Aggregation uses Source -> Destination	Public BusinessService	Public ProcessDesign	<u>Invariant</u> {mutually exclusive with "implements"}
Aggregation uses Source -> Destination	Public BusinessService	Public BusinessProcess	
Aggregation uses Source -> Destination	Public BusinessService	Public ProcessStep	

Attributes

Attribute	Notes	Constraints and tags
Location String Private [0..1]	Specifies where the service can be accessed.	<i>Default:</i>
ServiceInterface String Private [0..*]	Specifies how to communicate with the service.	<i>Default:</i>

ChangeDefinition

Type: Class
Status: Proposed. Version 1.0. Phase 1.0.
Package: Business *Keywords:*
Detail: Created on 11/12/2013. Last modified on 17/12/2013.
GUID: {5D6B1B14-0D35-40e3-8994-3A9A26CCE750}

Definition: A structured, well-defined specification for a proposed change.

Explanatory Text: A related object - the Statistical Need - is a change expression as it has been received by an organization. A Statistical Need is a raw expression of a proposed change, and is not necessarily well-defined. A Change Definition is created when a Statistical Need is analyzed by an organization, and expresses the raw need in well-defined, structured terms.

A Change Definition does not assess the feasibility of the change or propose solutions to deliver the change - this role is satisfied by the Business Case object. The precise structure or organization of a Change Definition can be further specified by rules or standards local to a given organization. It also includes the specific Concepts to be measured and the Population that is under consideration.

Once a Statistical Need has been received, the first step is to do the conceptual work to establish what it is we are trying to measure. The final output of this conceptual work is the Change Definition.

The next step is to assess how we are going to make the measurements - to design a solution and put forward a proposal for a body of work that will deliver on the requirements of the original Statistical Need

Custom Properties

- isActive = False

Connections

Connector	Source	Target	Notes
<u>Aggregation</u> basedUpon Unspecified	Public IdentifiableArtefact	Public ChangeDefinition	
<u>Aggregation</u> creates Source -> Destination	Public ChangeDefinition	Public StatisticalSupportProgram	
<u>Aggregation</u> describes Unspecified	Public StatisticalNeed	Public ChangeDefinition	
<u>Aggregation</u> isBasedOn Unspecified	Public ChangeDefinition	Public BusinessCase	
<u>Aggregation</u> isInformedBy Unspecified	Public Concept	Public ChangeDefinition	
<u>Aggregation</u> isInformedBy Unspecified	Public Population	Public ChangeDefinition	
<u>Aggregation</u> ResultsIn Unspecified	Public IdentifiableArtefact	Public ChangeDefinition	

EnvironmentChange

Type: **Class** **StatisticalNeed**
Status: Proposed. Version 1.0. Phase 1.0.
Package: Business **Keywords:**
Detail: Created on 11/12/2013. Last modified on 17/12/2013.
GUID: {A4F80169-4A6C-44ac-A74C-111C6B597093}

Definition: A requirement for change that originates from a change in the operating environment of the statistical organization.

Explanatory Text: An Environment Change reflects change in the context in which a statistical organization operates. Environment Changes can be of different origins and also take different forms. They can result from a precise event (budget cut, new legislation enforced) or from a progressive process (technical or methodological progress, application or tool obsolescence). Other examples of Environment Changes include the availability of a new Information Resource, the opportunity for new collaboration between organizations, etc.

Custom Properties

- isActive = False

Connections

Connector	Source	Target	Notes
Generalization Source -> Destination	Public EnvironmentChange	Public StatisticalNeed	

Attributes

Attribute	Notes	Constraints and tags
ChangeOrigin String Private		<i>Default:</i>
LegalChanges String Private [0..*]		<i>Default:</i>
MethodChanges String Private [0..*]		<i>Default:</i>

Attribute	Notes	Constraints and tags
OtherChanges String Private [0..*]		<i>Default:</i>
SoftwareChanges String Private [0..*]		<i>Default:</i>

InformationRequest

Type: **Class** **StatisticalNeed**

Status: Proposed. Version 1.0. Phase 1.0.

Package: Business *Keywords:*

Detail: Created on 11/12/2013. Last modified on 27/12/2013.

GUID: {A718C27B-53C4-4e77-B8F4-7E9DF1A79EF2}

Definition: An outline of a need for new information required for a particular purpose.

Explanatory Text: An Information Request is a special case of Statistical Need that may come in an organized form, for example by specifying on which Subject Field the information is required. It may also be a more general request and require refinement by the statistical agency and formalised in a Change Definition.

Custom Properties

- isActive = False

Connections

Connector	Source	Target	Notes
Generalization Source -> Destination	Public InformationRequest	Public StatisticalNeed	
Aggregation refersTo Unspecified	Public SubjectField	Public InformationRequest	

Attributes

Attribute	Notes	Constraints and tags
ContactDetailsOfRequest or String		<i>Default:</i>

Attribute	Notes	Constraints and tags
Private [0..1]		
CoverageOfInformationRequired String Private		<i>Default:</i>
DateInformationRequired Date Private [0..1]		<i>Default:</i>
InformationRequester String Private [0..1]		<i>Default:</i>

ProcessControl

Type: **Class**
Status: Proposed. Version 1.0. Phase 1.0.
Package: Business *Keywords:*
Detail: Created on 10/12/2013. Last modified on 29/12/2013.
GUID: {3A3F7445-A15F-4cfe-A65B-B82D7DE12C01}

Definition: A set of decision points which determine the flow between the Process Steps used to perform a Business Process.

Explanatory Text: The typical use of Process Control is to determine what happens next after a Process Step is executed. The possible paths, and the decision criteria, associated with a Process Control are specified as part of designing a production process, captured in a Process Control Design. There is typically a very close relationship between the design of a process and the design of a Process Control.

Custom Properties

- isActive = False

Connections

Connector	Source	Target	Notes
Aggregation post-controlTrigger Source -> Destination	Public ProcessStep	Public ProcessControl	
Aggregation pre-controlTrigger Source -> Destination	Public ProcessControl	Public ProcessStep	
Aggregation specifies Source -> Destination	Public ProcessControl	Public ProcessControlDesign	

Attributes

Attribute	Notes	Constraints and tags
StartEvent String Private [0..1]	The event which triggered the control.	<i>Default:</i>
Status String Private [0..1]	Success or error, typically using a coded value.	<i>Default:</i>

ProcessControlDesign

Type: **Class**
Status: Proposed. Version 1.0. Phase 1.0.
Package: Business *Keywords:*
Detail: Created on 10/12/2013. Last modified on 29/12/2013.
GUID: {5CF55DC9-4420-4f98-87B1-1FF0C2156BF7}

Definition: The specification of the decision points required during the execution of a Business Process.

Explanatory Text: The design of a Process Control typically takes place as part of the design of the process itself. This involves determining the conditional routing between the various sub-processes and services used by the executing process associated with the Process Control and specified by the Process Control Design.

It is possible to define a Process Control where the next step in the Process Step that will be executed is a fixed value rather than a "choice" between two or more possibilities. Where such a design would be appropriate, this feature allows, for example, initiation of a step in the Process Step representing the GSBPM Process Phase (5) to

always lead to initiation of GSBPM sub-process Integrate Data (5.1) as the next step.

This allows a process designer to divide a Business Process into logical steps (for example, where each step performs a specific Business Function through re-use of a Business Service) even if these process steps will always follow each other in the same order. In all cases, the Process Control Design defines and the Process Control manages the flow between Process Steps, even where the flow is "trivial". Process Design is left to focus entirely on the design of the process itself, not sequencing between steps.

Custom Properties

- isActive = False

Connections

Connector	Source	Target	Notes
Aggregation has Source -> Destination	Public ProcessControlDesign	Public ProcessDesign	
Aggregation has Source -> Destination	Public Rule	Public ProcessControlDesign	
Aggregation specifies Source -> Destination	Public ProcessControl	Public ProcessControlDesign	

ProcessDesign

Type: **Class**
Status: Proposed. Version 1.1. Phase 1.0.
Package: Business *Keywords:*
Detail: Created on 10/12/2013. Last modified on 29/12/2013.
GUID: {BF8FAC9C-D104-4f1c-91C8-A9CA0B711DFD}

Definition: The specification of how a Process Step will be performed. This includes specifying the types of Process Inputs required and the type of Process Outputs that will be produced.

Explanatory Text: A Process Design is the design time specification of a Process Step that is performed as part of a run-time Business Service. A Process Step can be as big or small as the designer of a particular Business Service chooses. From a design perspective, one Process Step can contain "sub-steps", each of which is conceptualized as a (smaller) Process Step in its own right. Each of those "sub-steps" may contain "sub-steps" within them and so on indefinitely. It is a decision for the process designer to what extent to subdivide steps. At some level it will be appropriate to consider a Process Step to be a discrete task (unit of work) without warranting further subdivision. At that level the Process Step is designed to process particular Process Inputs, according to a particular Process Method, to produce particular Process Outputs. The flow between a Process Step and any sub steps is managed via Process Control.

Custom Properties

- isActive = False

Connections

Connector	Source	Target	Notes
Aggregation has Source -> Destination	Public ProcessDesign	Public ProcessPattern	
Aggregation has Source -> Destination	Public ProcessInputSpecificati on	Public ProcessDesign	
Aggregation has Source -> Destination	Public ProcessOutputSpecifica tion	Public ProcessDesign	
Aggregation has Source -> Destination	Public ProcessControlDesign	Public ProcessDesign	
Aggregation implements Source -> Destination	Public ProcessMethod	Public ProcessDesign	
Aggregation implements Source -> Destination	Public ProcessDesign	Public BusinessService	<u>Invariant</u> {mutually exclusive with "uses"}
Aggregation specifies Source -> Destination	Public ProcessStep	Public ProcessDesign	
Aggregation specifiesDeliveryOf Source -> Destination	Public BusinessFunction	Public ProcessDesign	
Aggregation uses Source -> Destination	Public ProcessDesign	Public StatisticalProgramDesi gn	
Aggregation uses Source -> Destination	Public BusinessService	Public ProcessDesign	<u>Invariant</u> {mutually exclusive with "implements"}

ProcessInput

Type: **Class**
Status: Proposed. Version 1.0. Phase 1.0.
Package: Business **Keywords:**
Detail: Created on 10/12/2013. Last modified on 29/12/2013.
GUID: {6F1C04DF-5593-4377-9478-975E4F3DA509}

Definition: Any instance of an information object which is supplied to a Process Step Instance at the time its execution is initiated.

Explanatory Text: Process Input might include information that is used as an input that will be transformed (e.g.

a Data Set), information that is used to control specific parameters of the process (e.g. a Rule), and information that is used as reference to guide the process (e.g. a Code List).

Custom Properties

- isActive = False

Connections

Connector	Source	Target	Notes
Association (correspondence) Unspecified	Public ProcessInput	Public ProcessInputSpecification	
Aggregation has Source -> Destination	Public ProcessInput	Public ProcessStepInstance	
Aggregation references Source -> Destination	Public IdentifiableArtefact	Public ProcessInput	

Attributes

Attribute	Notes	Constraints and tags
ProcessInputType String Private [0..1]	e.g. Parameter Input, Process Support Input, Transformable Input	<i>Default:</i>

ProcessInputSpecification

Type: **Class**
Status: Proposed. Version 1.0. Phase 1.0.
Package: Business **Keywords:**
Detail: Created on 10/12/2013. Last modified on 29/12/2013.
GUID: {F9E3E6BF-ECE8-4f2f-A876-A2D59015BE95}

Definition: A record of the types of inputs required for a Process Design.

Explanatory Text: The Process Input Specification enumerates the Process Inputs required at the time a Process Design is executed. For example, if five different Process Inputs are required, the Process Input Specification will describe each of the five inputs. For each required Process Input the Process Input Specification will record the type of information object (based on GSIM) which will be used as the Process Input (example types might be a Dimensional Data Set or a Classification).

The Process Input to be provided at the time of Process Step execution will then be a specific instance of the type of information object specified by the Process Input Specification. For example, if a Process Input Specification requires a Dimensional Data Set then the corresponding Process Input provided at the time of Process Step

execution will be a particular Dimensional Data Set.

Custom Properties

- isActive = False

Connections

Connector	Source	Target	Notes
Association (correspondence) Unspecified	Public ProcessInput	Public ProcessInputSpecification	
Aggregation has Source -> Destination	Public ProcessInputSpecification	Public ProcessDesign	

Attributes

Attribute	Notes	Constraints and tags
Type String Private	This denotes the type of object which can be used as an input.	<i>Default:</i>

ProcessMethod

Type: **Class**
Status: Proposed. Version 1.0. Phase 1.0.
Package: Business *Keywords:*
Detail: Created on 10/12/2013. Last modified on 29/12/2013.
GUID: {D96B10DF-2437-4c1d-8ECB-BE521A57F0B9}

Definition: A specification of the technique which will be used to perform the unit of work.

Explanatory Text: The technique specified by a Process Method is independent from any choice of technologies and/or other tools which will be used to apply that technique in a particular instance. The definition of the technique may, however, intrinsically require the application of specific Rules (for example, mathematical or logical formulas).

A Process Method describes a particular method for performing a Process Step.

Custom Properties

- isActive = False

Connections

Connector	Source	Target	Notes
Aggregation has Source -> Destination	Public Rule	Public ProcessMethod	
Aggregation implements Source -> Destination	Public ProcessMethod	Public ProcessDesign	

ProcessOutput

Type: **Class**
Status: Proposed. Version 1.0. Phase 1.0.
Package: Business *Keywords:*
Detail: Created on 10/12/2013. Last modified on 29/12/2013.
GUID: {15DA1711-4B1D-4dbc-94CC-E2C48BD1B21A}

Definition: Any instance of an information object which is produced by a Process Step as a result of its execution.

Explanatory Text: Process Outputs have an attribute of Process Output Type, which has two possible values:

- Transformed Output is the result which provides the "reason for existence" of the Process Step. If that output were no longer required then there would be no need for the Process Step in its current form. Typically a Transformed Output is either a Process Input to a subsequent Process Step or it represents the final product from a statistical business process.
- A Process Metric records information about the execution of a Process Step. For example, how long it took to complete execution of the Process Step and what percentage of records in the Process Input was updated by the Process Step to produce the Transformed Output.

Custom Properties

- isActive = False

Connections

Connector	Source	Target	Notes
Association (correspondence) Unspecified	Public ProcessOutputSpecifica tion	Public ProcessOutput	
Aggregation has Source -> Destination	Public ProcessOutput	Public ProcessStepInstance	
Aggregation references Source -> Destination	Public IdentifiableArtefact	Public ProcessOutput	

Attributes

Attribute	Notes	Constraints and tags
ProcessOutputType String Private [0..1]	Transformed Output or Process Metric	<i>Default:</i>

ProcessOutputSpecification

Type: **Class**
Status: Proposed. Version 1.0. Phase 1.0.
Package: Business *Keywords:*
Detail: Created on 10/12/2013. Last modified on 29/12/2013.
GUID: {3806A69E-5845-40f6-BC2F-AB19A3DC3DDD}

Definition: A record of the types of outputs required for a Process Design.

Explanatory Text: The Process Output Specification enumerates the Process Outputs that are expected to be produced at the time a Process Design is executed. For example, if five different Process Outputs expected, the Process Output Specification will describe each of the five outputs. For each expected Process Output the Process Output Specification will record the type of information object (based on GSIM) which will be used as the Process Output (Example types might be a Dimensional Data Set or a Classification).

The Process Output to be provided at the time of Process Step execution will then be a specific instance of the type of information object specified by the Process Output Specification. For example, if a Process Output Specification expects a Dimensional Data Set then the corresponding Process Output provided at the time of Process Step execution will be a particular Dimensional Data Set.

Custom Properties

- isActive = False

Connections

Connector	Source	Target	Notes
Association (correspondence) Unspecified	Public ProcessOutputSpecifica tion	Public ProcessOutput	
Aggregation has Source -> Destination	Public ProcessOutputSpecifica tion	Public ProcessDesign	

Attributes

Attribute	Notes	Constraints and tags
-----------	-------	----------------------

Attribute	Notes	Constraints and tags
Type String Private	This denotes the type of object which can be used as an input.	<i>Default:</i>

ProcessPattern

Type: **Class**
Status: Proposed. Version 1.0. Phase 1.0.
Package: Business *Keywords:*
Detail: Created on 10/12/2013. Last modified on 29/12/2013.
GUID: {0C2B1392-0D00-4f6c-AA16-AE658090B62D}

Definition: A nominated set of Process Designs, and associated Process Control Designs (flow), which have been highlighted for possible reuse.

Explanatory Text: In a particular Business Process, some Process Steps may be unique to that Business Process while others may be applicable to other Business Processes. A Process Pattern can be seen as a reusable template. It is a means to accelerate design processes and to achieve sharing and reuse of design patterns which have proved effective. Reuse of Process Patterns can indicate the possibility to reuse related Business Services.

By deciding to reuse a Process Pattern, a designer is actually reusing the pattern of Process Designs and Process Control Designs associated with that Process Pattern. They will receive a new instance of the Process Designs and Process Control Designs. If they then tailor their "instance" of the Process Designs and Process Control Designs to better meet their needs they will not change the definition of the reusable Process Pattern.

Custom Properties

- isActive = False

Connections

Connector	Source	Target	Notes
Aggregation has Source -> Destination	Public ProcessDesign	Public ProcessPattern	
Aggregation supports Source -> Destination	Public BusinessFunction	Public ProcessPattern	
Aggregation uses Source -> Destination	Public ProcessPattern	Public StatisticalProgramDesi gn	

ProcessStep

Type: Class

Status: Proposed. Version 1.0. Phase 1.0.

Package: Business **Keywords:**

Detail: Created on 10/12/2013. Last modified on 29/12/2013.

GUID: {99774F90-B259-4f6c-ADF1-4D1B76E11148}

Definition: A Process Step is a work package that performs a Business Process. A Process Step implements the Process Step Design specified in order to produce the outputs for which the Process Step was designed.

Explanatory Text: Each Process Step is the use of a Process Step Design in a particular context (e.g. within a specific Business Process). At the time of execution a Process Step Instance specifies the actual instances of input objects (for example, specific Data Sets, specific Variables) to be supplied.

Custom Properties

- isActive = False

Connections

Connector	Source	Target	Notes
Aggregation associates Source -> Destination	Public ProcessStep	Public Scraping Process Map	
Aggregation has Source -> Destination	Public ProcessStep	Public ProcessStep	
Aggregation has Source -> Destination	Public ProcessStep	Public BusinessProcess	
Aggregation has Source -> Destination	Public ProcessStepInstance	Public ProcessStep	
Aggregation performs Source -> Destination	Public ProcessStep	Public BusinessService	
Aggregation post-controlTrigger Source -> Destination	Public ProcessStep	Public ProcessControl	
Aggregation pre-controlTrigger Source -> Destination	Public ProcessControl	Public ProcessStep	
Aggregation specifies Source -> Destination	Public ProcessStep	Public ProcessDesign	
Aggregation uses Source -> Destination	Public BusinessService	Public ProcessStep	

ProcessStepInstance

Type: Class
Status: Proposed. Version 1.0. Phase 1.0.
Package: Business *Keywords:*
Detail: Created on 10/12/2013. Last modified on 29/12/2013.
GUID: {01328F05-ED98-4fef-911C-664840C5C25B}

Definition: An executed step in a Business Process. A Process Step Instance specifies the actual inputs to and outputs from for an occurrence of a Process Step.

Explanatory Text: Each Process Step is the use of a Process Step Design in a particular context (e.g. within a specific Business Process). At the time of execution a Process Step Instance specifies the actual instances of input objects (for example, specific Data Sets, specific Variables) to be supplied.

Each Process Step Instance may produce unique results even though the Process Step remains constant.

Even when the inputs remain the same, metrics such as the elapsed time to complete execution of process step may vary from execution to execution. For this reason, each Process Step Instance details of inputs and outputs for that instance of implementing the Process Step.

In this way it is possible to trace the flow of execution of a Business Process through all the Process Steps which were involved.

Custom Properties

- isActive = False

Connections

Connector	Source	Target	Notes
Aggregation has Source -> Destination	Public ProcessStepInstance	Public ProcessStep	
Aggregation has Source -> Destination	Public ProcessInput	Public ProcessStepInstance	
Aggregation has Source -> Destination	Public ProcessOutput	Public ProcessStepInstance	

Attributes

Attribute	Notes	Constraints and tags
EndTime Date Private [0..1]	The time a process instance ends.	<i>Default:</i>
StartTime Date	The time a process instance starts.	<i>Default:</i>

Attribute	Notes	Constraints and tags
Private [0..1]		
TriggerEvent Number Private [0..1]	The event which gives the signal to start the process execution.	<i>Default:</i>

Rule

Type: **Class**
Status: Proposed. Version 1.0. Phase 1.0.
Package: Business *Keywords:*
Detail: Created on 10/12/2013. Last modified on 29/12/2013.
GUID: {5F883D26-76DF-4036-9BA7-621DF05A9DD0}

Definition: A specific mathematical or logical expression which can be evaluated to determine specific behavior.

Explanatory Text: Rules are of several types: they may be derived from methods to determine the control flow of a process when it is being designed and executed; they may be used as the input parameters of processes (eg, imputation rules, edit rules); and they may be used to drive the logical flow of a questionnaire. There are many forms of Rules and their purpose, character and expression can vary greatly.

Custom Properties

- isActive = False

Connections

Connector	Source	Target	Notes
Aggregation has Source -> Destination	Public Rule	Public ProcessControlDesign	
Aggregation has Source -> Destination	Public Rule	Public ProcessMethod	
Aggregation uses Source -> Destination	Public Rule	Public QuestionnaireLogic	

Attributes

Attribute	Notes	Constraints and tags
-----------	-------	----------------------

Attribute	Notes	Constraints and tags
Algorithm String Private [0..1]	The rule expressed as an algorithm.	<i>Default:</i>
RuleType String Private [0..1]	A type taken from a controlled vocabulary.	<i>Default:</i>
SystemExecutableIndicat or Binary Private [0..1]	Whether the rule is formatted to be executed by a system, or is only documentary.	<i>Default:</i>

StatisticalNeed

Type: **Class**
Status: Proposed. Version 1.0. Phase 1.0.
Package: Business *Keywords:*
Detail: Created on 11/12/2013. Last modified on 27/12/2013.
GUID: {8BE02154-28BF-4605-852F-3BCD28589708}

Definition: A requirement, request or other notification that will be considered by an organization. A Statistical Need does not necessarily have structure or format - it is a 'raw' need as received by the organization. A Statistical Need may be of a variety of types including Environmental Change or Information Request.

Explanatory Text: The Statistical Need is a proposed or imposed requirement, request or other notification as it has been received by an organization. A Statistical Need is a raw expression of a requirement, and is not necessarily well-defined. A related object - Change Definition - is created when a Statistical Need is analyzed by an organization. Change Definition expresses the raw need in well-defined, structured terms. Once a Statistical Need has been received, the first step is to do the conceptual work to establish what it is we are trying to measure. The final output of this conceptual work is the Change Definition.

In some cases, the Statistical Need can result from the Assessment of the quality, efficiency, etc. of an existing process.

Custom Properties

- isActive = False

Connections

Connector	Source	Target	Notes
Generalization Source -> Destination	Public EnvironmentChange	Public StatisticalNeed	
Generalization Source -> Destination	Public InformationRequest	Public StatisticalNeed	
Aggregation describes Unspecified	Public StatisticalNeed	Public ChangeDefinition	
Aggregation evaluationOf Source -> Destination	Public StatisticalNeed	Public Assessment	
Aggregation identifies Unspecified	Public StatisticalNeed	Public StatisticalSupportProgram	
Aggregation initiates Source -> Destination	Public BusinessCase	Public StatisticalNeed	

Attributes

Attribute	Notes	Constraints and tags
DateCreated Date Private [0..1]		<i>Default:</i>
Status Met/Unmet Private [0..1]		<i>Default:</i>
Type Private [0..1]	e.g. Information request; External environment change; Internal environment change; Other	<i>Default:</i>

StatisticalProgram

Type: **Class**
Status: Proposed. Version 1.0. Phase 1.0.
Package: Business **Keywords:**
Detail: Created on 10/12/2013. Last modified on 17/12/2013.
GUID: {B16D70F2-3DCB-4fb1-8BA4-B18501050359}

Definition: A set of activities, which may be repeated, to investigate characteristics of a given Population. It describes the purpose and context of a set of Business Process within the context of the relevant Statistical Program Cycles.

Explanatory Text: The Statistical Program is one of a family of objects that provide the environmental context in which activities to produce statistics within a statistical agency are conducted. Statistical Program is the top level object that describes the purpose and objectives of a set of activities. Statistical Program will usually correspond to an ongoing activity such as a survey or output series. Some examples of Statistical Program are:

- Labour Force Survey - Multipurpose Household Survey - National Accounts - Demography - Overseas Arrivals and Departures

Related to the Statistical Program object there are Statistical Program Design and Statistical Program Cycle objects that hold the detailed information about the design and conduct of the Business Process.

In the case of the traditional approach, an organization has received a Statistical Need and produced a Change Definition and an approved Business Case. The Business Case will specify either a change to the design or methodology of an existing Statistical Program, which will result in a new Statistical Program Design; or a change to one or more existing Statistical Programs (for example, to add an additional objective to the Statistical Program); or result in a new Statistical Program being created.

This does not include statistical support functions such as metadata management, data management (and other overarching GSBPM processes) and design functions. These activities are conducted as part of Statistical Support Programs.

Custom Properties

- isActive = False

Connections

Connector	Source	Target	Notes
Aggregation has Source -> Destination	Public StatisticalProgramCycl e	Public StatisticalProgram	
Aggregation initiates Source -> Destination	Public StatisticalProgram	Public BusinessCase	
Aggregation relatedTo Source -> Destination	Public StatisticalProgram	Public StatisticalProgram	
Aggregation uses Source -> Destination	Public StatisticalProgramDesi gn	Public StatisticalProgram	

Connector	Source	Target	Notes

Attributes

Attribute	Notes	Constraints and tags
Budget Numeric Private [0..1]		<i>Default:</i>
DateEnded Date Private [0..1]		<i>Default:</i>
DateInitiated Date Private [0..1]		<i>Default:</i>
History String Private	A description of the precursors of the program within the organisation	<i>Default:</i>
LegalFramework String Private [0..*]		<i>Default:</i>
LegislativeReference String Private [0..*]	Any legislative materials, eg parliamentary tabling documents	<i>Default:</i>

Attribute	Notes	Constraints and tags
SourceOfFunding String Private [0..1]		<i>Default:</i>
Status Private	The current condition of the program	<i>Default:</i>
SubjectMatterDomain String Private [1..*]		<i>Default:</i>

StatisticalProgramCycle

Type: **Class**

Status: Proposed. Version 1.0. Phase 1.0.

Package: Business *Keywords:*

Detail: Created on 10/12/2013. Last modified on 06/10/2014.

GUID: {53DBE986-27E4-47be-8628-142A16C10777}

Definition: A set of activities to investigate characteristics of a given Population for a particular reference period.

Explanatory Text: A Statistical Program Cycle documents the execution of an iteration of a Statistical Program according to the associated Statistical Program Design for a certain reference period. It identifies the activities that are undertaken as a part of the cycle and the specific resources required and processes used and description of relevant methodological information used in this cycle defined by the Statistical Program Design.

Custom Properties

- isActive = False

Connections

Connector	Source	Target	Notes
Generalization Source -> Destination	Public StudyFamily	Public StatisticalProgramCycle	

Connector	Source	Target	Notes
Aggregation has Source -> Destination	Public StatisticalProgramCycl e	Public StatisticalProgram	
Aggregation includes Source -> Destination	Public BusinessProcess	Public StatisticalProgramCycl e	
Aggregation performs Source -> Destination	Public StatisticalProgramDesi gn	Public StatisticalProgramCycl e	

Attributes

Attribute	Notes	Constraints and tags
ReferencePeriodEnd Date Private		<i>Default:</i>
ReferencePeriodStart Date Private		<i>Default:</i>

StatisticalProgramDesign

Type: **Class**
Status: Proposed. Version 1.0. Phase 1.0.
Package: Business **Keywords:**
Detail: Created on 10/12/2013. Last modified on 27/12/2013.
GUID: {D185FAD8-310A-47a3-92EE-2C1B7E5B2387}

Definition: The specification of the resources required, processes used and description of relevant methodological information about the set of activities undertaken to investigate characteristics of a given Population.

Explanatory Text: The Statistical Program Design is an objects that provide the operational context in which a set of Business Processes is conducted.

A simple example is where a Statistical Program relates to a single survey, for example, the Labour Force Survey. The Statistical Program will have a series of Statistical Program Design objects that describe the methodology and design used throughout the life of the survey. When a methodological change is made to the survey, a new Statistical Program Design is created to record the details of the new design.

Custom Properties

- isActive = False

Connections

Connector	Source	Target	Notes
Aggregation impacts Unspecified	Public StatisticalProgramDesign	Public StatisticalSupportProgram	
Aggregation isBasedOn Source -> Destination	Public BusinessCase	Public StatisticalProgramDesign	
Aggregation performs Source -> Destination	Public StatisticalProgramDesign	Public StatisticalProgramCycle	
Aggregation uses Source -> Destination	Public StatisticalProgramDesign	Public StatisticalProgram	
Aggregation uses Source -> Destination	Public BusinessFunction	Public StatisticalProgramDesign	
Aggregation uses Source -> Destination	Public BusinessService	Public StatisticalProgramDesign	
Aggregation uses Source -> Destination	Public ProcessDesign	Public StatisticalProgramDesign	
Aggregation uses Source -> Destination	Public ProcessPattern	Public StatisticalProgramDesign	

Attributes

Attribute	Notes	Constraints and tags
ConceptualFramework String Private [0..*]	Describe the conceptual framework for the Statistical Program (e.g. SNA)	<i>Default:</i>
DateEnded Date	Last date of validity	<i>Default:</i>

Attribute	Notes	Constraints and tags
Private [0..1]		
DateInitiated Date Private [0..1]	First date of validity	<i>Default:</i>
Status ControlledVocabulary Private	e.g. New Proposal, New-Under Development, Current, Completed, Cancelled, Transferred to Another Organisation	<i>Default:</i>

StatisticalSupportProgram

Type: **Class**

Status: Proposed. Version 1.0. Phase 1.0.

Package: Business *Keywords:*

Detail: Created on 10/12/2013. Last modified on 27/12/2013.

GUID: {77EB8972-D659-4f41-A52D-F48AE5A56240}

Definition: A program which is not related to the post-design cyclic production of statistical products, but is necessary to support cyclical production.

Explanatory Text: This type of program will include such functions as metadata management, data management, methodological research, and design functions. These programs correspond to the horizontal functions shown in the GSBPM, as well as programs to create new or change existing Statistical Programs.

Custom Properties

- isActive = False

Connections

Connector	Source	Target	Notes
Aggregation creates Source -> Destination	Public ChangeDefinition	Public StatisticalSupportProgram	
Aggregation has	Public	Public	

Connector	Source	Target	Notes
Source -> Destination	BusinessProcess	StatisticalSupportProgram	
Aggregation identifies Unspecified	Public StatisticalNeed	Public StatisticalSupportProgram	
Aggregation impacts Unspecified	Public StatisticalProgramDesign	Public StatisticalSupportProgram	
Aggregation initiates Source -> Destination	Public StatisticalSupportProgram	Public BusinessCase	

Attributes

Attribute	Notes	Constraints and tags
DateEnded Date Private [0..1]		<i>Default:</i>
DateInitiated Date Private [0..1]		<i>Default:</i>
History String Private [0..1]	A description of the precursors of the program within the organisation	<i>Default:</i>
SignificantEvents String Private [0..1]	A description of the real-world events which lead to the creation of the program	<i>Default:</i>
Status Private	The current condition of the program	<i>Default:</i>

Attribute	Notes	Constraints and tags
SubjectMatterDomain String Private [0..1]	An indication of how the program fits into the organisation's scheme for describing these, if applicable.	<i>Default:</i>

Concepts

Type: **Package**
Status: Proposed. Version 1.1. Phase 1.0.
Package: Model
Detail: Created on 05/12/2013. Last modified on 27/12/2013
GUID: {F72D22E7-9FD0-4a41-9F32-3638EFF9A4D6}

Classification - (Class diagram)
Created By: Chris on 05/12/2013
Last Modified: 29/12/2013
Version: 1.0. *Locked:* False
GUID: {71C2EF39-1D3F-4f37-A6B8-F2D3C97ED23D}

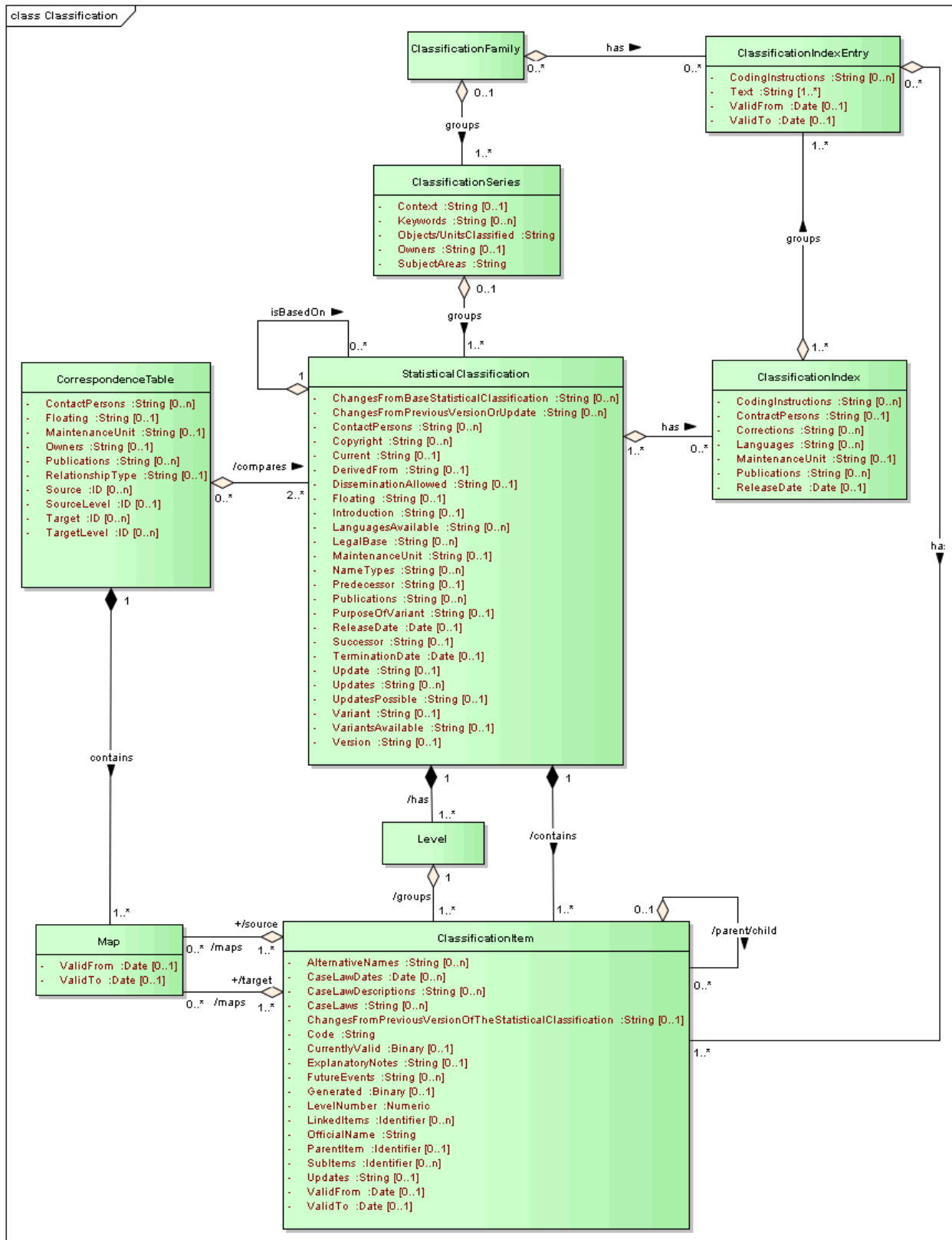


Figure: 8

Concept - (Class diagram)

Created By: Chris on 05/12/2013

Last Modified: 29/12/2013

Version: 1.0. Locked: False

GUID: {AC4195DA-8221-4661-A411-B9C67CA9EE1F}

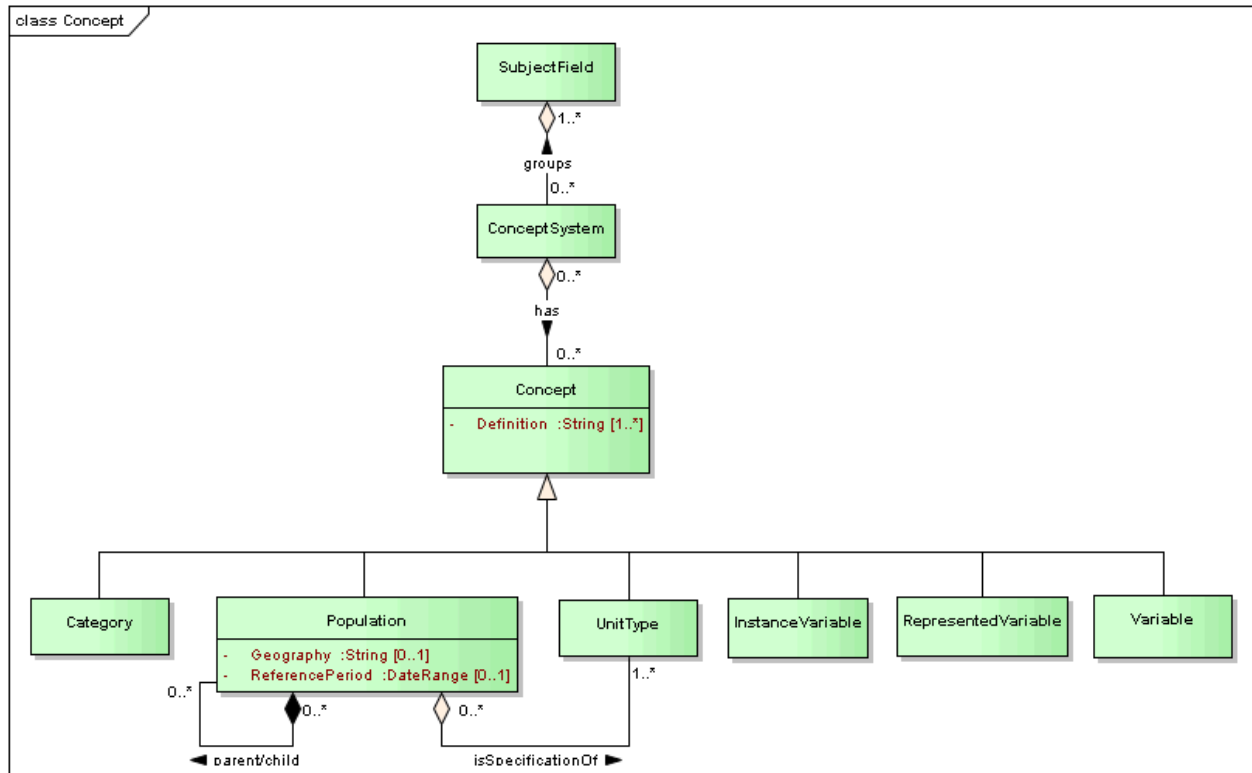


Figure: 9

InstanceVariable - (Class diagram)

Created By: Chris on 16/12/2013

Last Modified: 29/12/2013

Version: 1.0. Locked: False

GUID: {1AD9DC30-85A4-4ad2-9713-A80D7DB043FB}

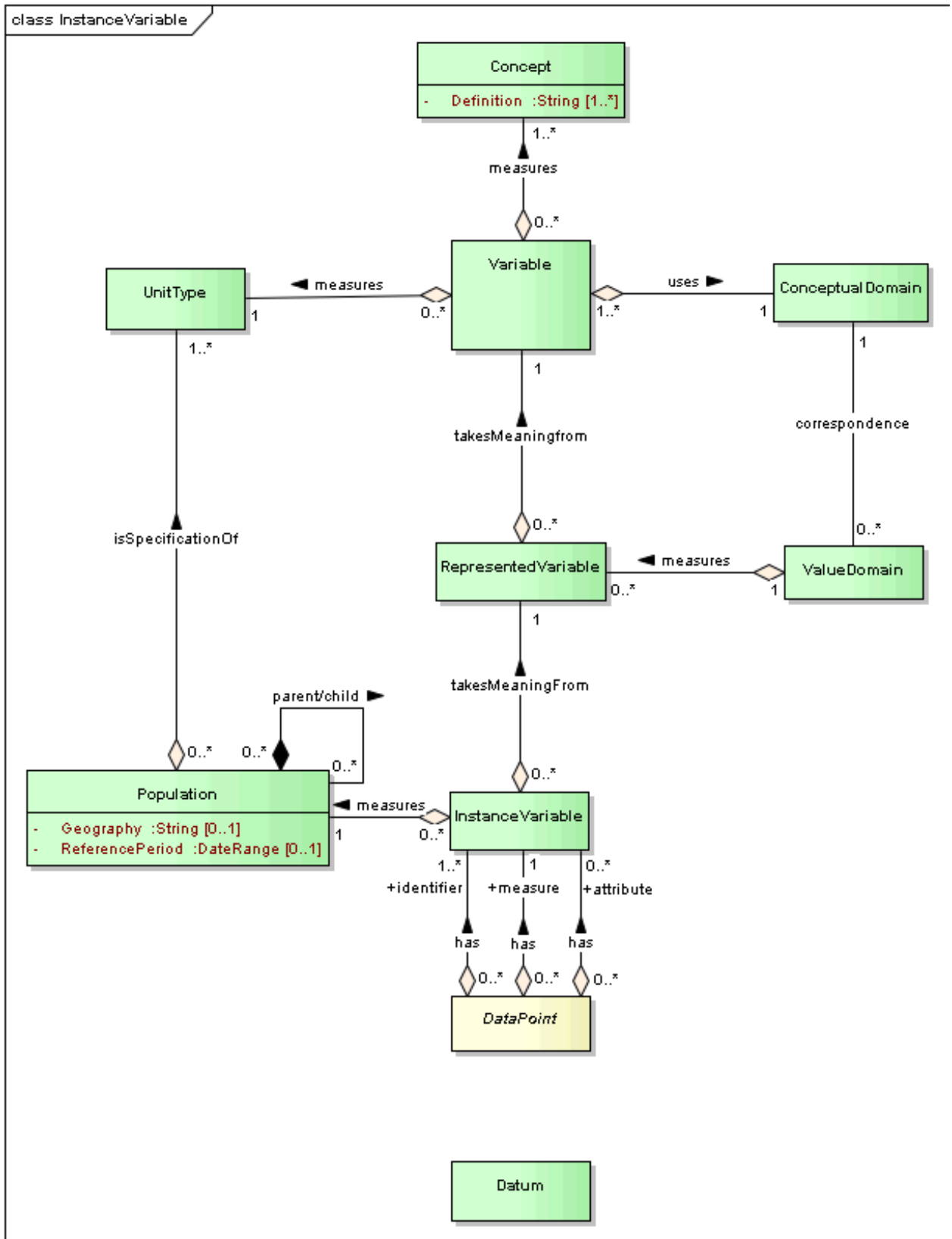


Figure: 10

Last Modified: 29/12/2013
Version: 1.0. *Locked:* False
GUID: {88723AFF-8FC8-4c60-A695-54E2DFCD0A2B}

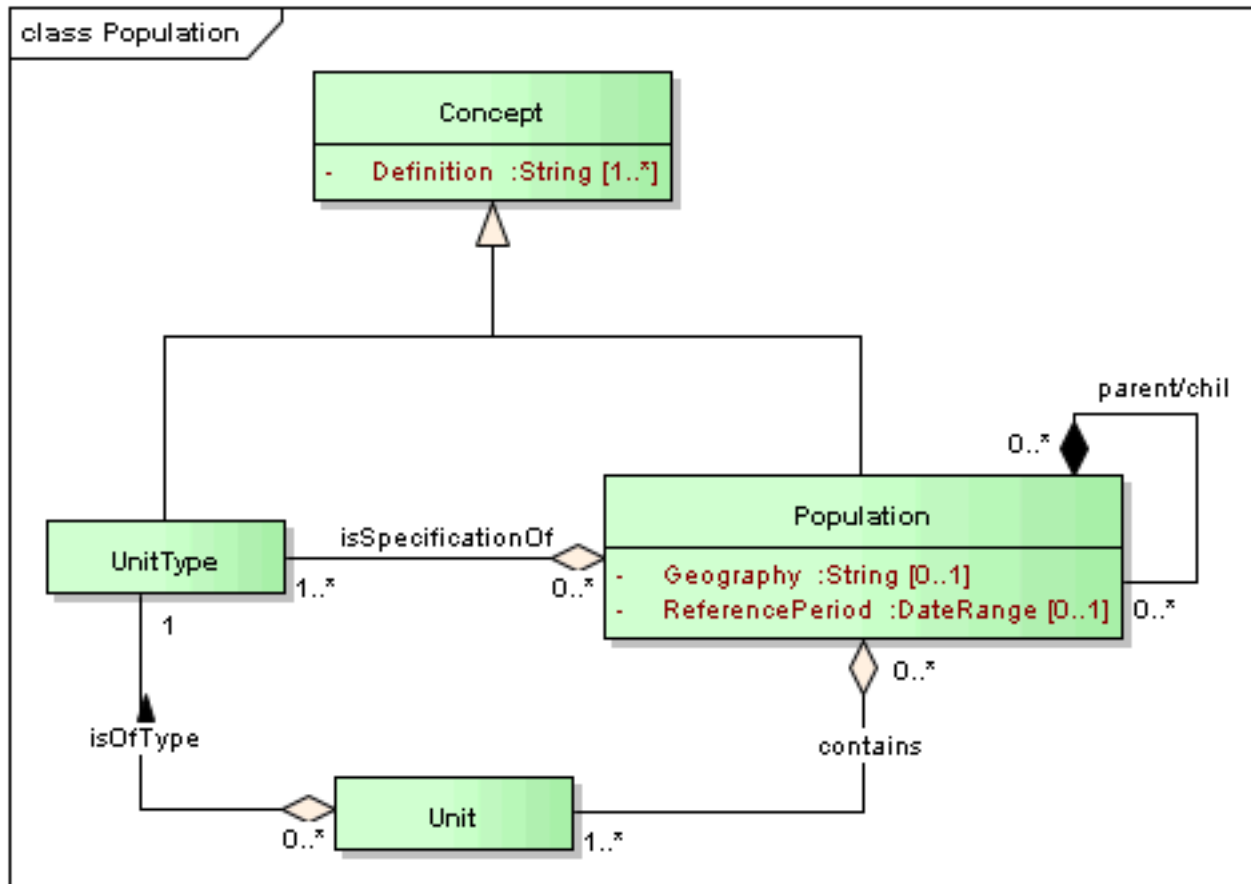


Figure: 12

Variable_Represented_Variable - (Class diagram)

Created By: Chris on 05/12/2013
Last Modified: 29/12/2013
Version: 1.0. *Locked:* False
GUID: {86120E5C-A382-4569-981B-55DB5D7CF54E}

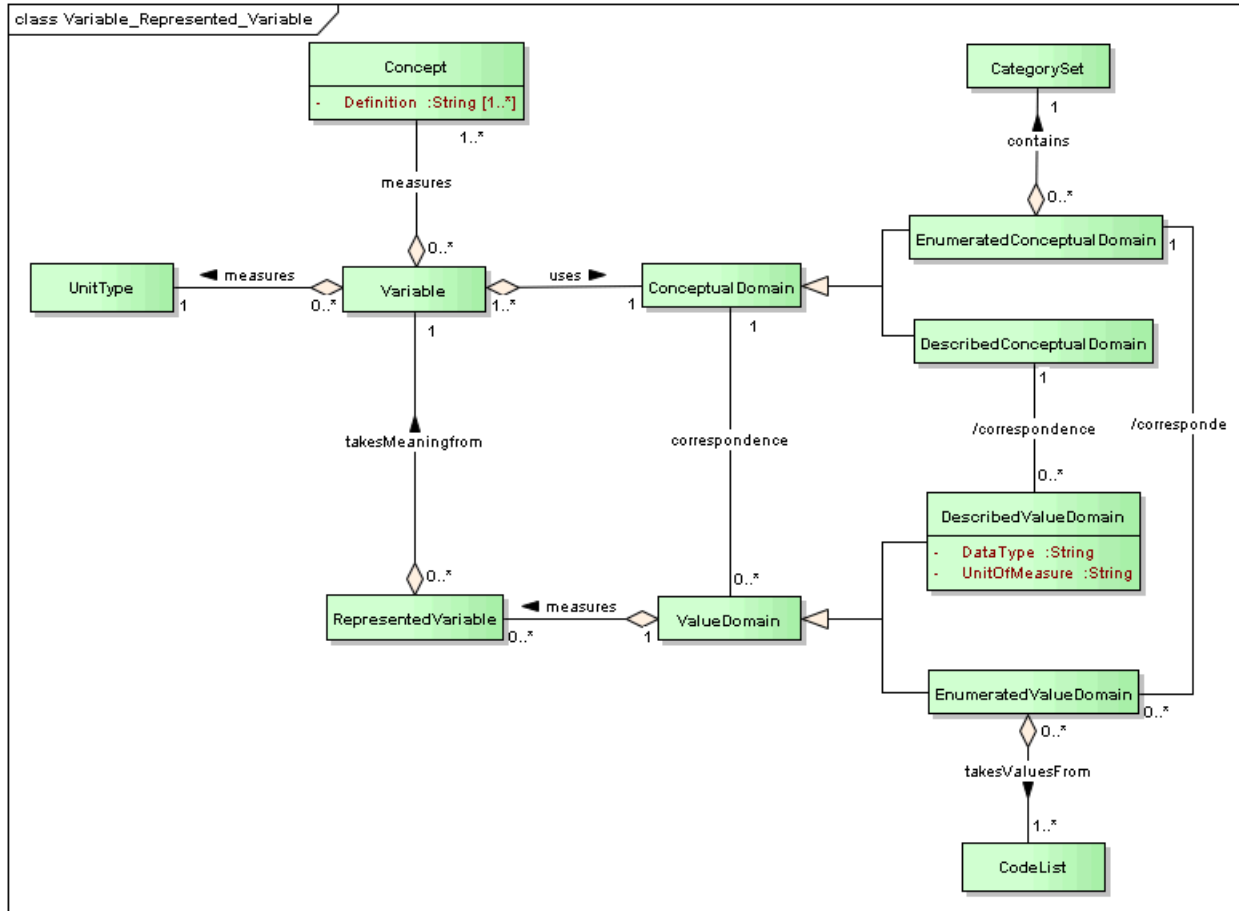


Figure: 13

Category

Type: **Class Concept**
Status: Proposed. Version 1.0. Phase 1.0.
Package: Concepts **Keywords:**
Detail: Created on 05/12/2013. Last modified on 17/12/2013.
GUID: {8ECE9215-5FAD-4818-8911-5A79BD2FD937}

Definition: A Concept whose role is to extensionally define and measure a characteristic.

Explanatory Text: Categories for the Concept of sex include: Male, Female

Note: An extensional definition is a description of a Concept by enumerating all of its sub ordinate Concepts under one criterion or sub division.

For example - the Noble Gases (in the periodic table) is extensionally defined by the set of elements including Helium, Neon, Argon, Krypton, Xenon, Radon. (ISO 1087-1)

Custom Properties

- isActive = False

Connections

Connector	Source	Target	Notes
Generalization Source -> Destination	Public Category	Public Concept	
Aggregation takesMeaningFrom Source -> Destination	Public Category	Public Node	

CategoryItem

Type: **Class** **Node**
Status: Proposed. Version 1.0. Phase 1.0.
Package: Concepts *Keywords:*
Detail: Created on 05/12/2013. Last modified on 17/12/2013.
GUID: {6FE7406A-B4AD-44f0-BAF9-BFFD088A5113}

Definition: An element of a Category Set.

Explanatory Text: A type of Node particular to a Category Set type of Node Set. A Category Item contains the meaning of a Category without any associated representation.

Custom Properties

- isActive = False

Connections

Connector	Source	Target	Notes
Generalization Source -> Destination	Public CategoryItem	Public Node	
Aggregation /contains Source -> Destination	Public CategoryItem	Public CategorySet	

CategorySet

Type: **Class** **NodeSet**
Status: Proposed. Version 1.0. Phase 1.0.
Package: Concepts *Keywords:*
Detail: Created on 05/12/2013. Last modified on 17/12/2013.
GUID: {D0A36549-3EE0-488d-8B19-A163E5DF493D}

Definition: A list of Categories

Explanatory Text: A Category Set is a type of Node Set which groups Categories through the use of Category

Items. The Categories in a Category Set typically have no assigned Designations (Codes).

For example:
Male, Female

Custom Properties

- isActive = False

Connections

Connector	Source	Target	Notes
Generalization Source -> Destination	Public CategorySet	Public NodeSet	
Aggregation /contains Source -> Destination	Public CategoryItem	Public CategorySet	
Aggregation contains Source -> Destination	Public CategorySet	Public EnumeratedConceptual Domain	

ClassificationFamily

Type: **Class**

Status: Proposed. Version 1.0. Phase 1.0.

Package: Concepts *Keywords:*

Detail: Created on 09/12/2013. Last modified on 17/12/2013.

GUID: {D6F3342F-03C3-4e2d-ADFD-73BE4A4FB5CC}

Definition: A Classification Family is a group of Classification Series related from a particular point of view. The Classification Family is related by being based on a common Concept (e.g. economic activity).

Explanatory Text: Different classification databases may use different types of Classification Families and have different names for the families, as no standard has been agreed upon.

Custom Properties

- isActive = False

Connections

Connector	Source	Target	Notes
Aggregation groups Source -> Destination	Public ClassificationSeries	Public ClassificationFamily	
Aggregation has Source -> Destination	Public ClassificationIndexEntr y	Public ClassificationFamily	

Connector	Source	Target	Notes

ClassificationIndex

Type: **Class**
Status: Proposed. Version 1.1. Phase 1.0.
Package: Concepts **Keywords:**
Detail: Created on 09/12/2013. Last modified on 27/12/2013.
GUID: {B87C0232-A6AB-4d25-8F9D-B6860B4C9426}

Definition: A Classification Index is an ordered list (alphabetical, in code order etc) of Classification Index Entries. A Classification Index can relate to one particular or to several Statistical Classifications.

Explanatory Text: A Classification Index shows the relationship between text found in statistical data sources (responses to survey questionnaires, administrative records) and one or more Statistical Classifications. A Classification Index may be used to assign the codes for Classification Items to observations in statistical collections.

A Statistical Classification is a subtype of Node Set. The relationship between Statistical Classification and Classification Index can also be extended to include the other Node Set types - Code List and Category Set.

Custom Properties

- isActive = False

Connections

Connector	Source	Target	Notes
Aggregation groups Source -> Destination	Public ClassificationIndexEntry	Public ClassificationIndex	
Aggregation has Source -> Destination	Public ClassificationIndex	Public StatisticalClassification	
Aggregation has Source -> Destination	Public ClassificationIndex	Public NodeSet	

Attributes

Attribute	Notes	Constraints and tags
CodingInstructions String Private [0..n]	Additional information which drives the coding process for all entries in a Classification Index.	<i>Default:</i>
ContractPersons String	Person(s) who may be contacted for additional	<i>Default:</i>

Attribute	Notes	Constraints and tags
Private [0..1]	information about the Classification Index.	
Corrections String Private [0..n]	Verbal summary description of corrections, which have occurred within the Classification Index. Corrections include changing the item code associated with an Classification Index Entry.	<i>Default:</i>
Languages String Private [0..n]	A Classification Index can exist in several languages. Indicates the languages available. If a Classification Index exists in several languages, the number of entries in each language may be different, as the number of terms describing the same phenomenon can change from one language to another. However, the same phenomena should be described in each language.	<i>Default:</i>
MaintenanceUnit String Private [0..1]	The unit or group of persons within the organisation responsible for the Classification Index, i.e. for adding, changing or deleting Classification Index Entries.	<i>Default:</i>
Publications String Private [0..n]	A list of the publications in which the Classification Index has been published.	<i>Default:</i>
ReleaseDate Date Private [0..1]	Date when the current version of the Classification Index was released.	<i>Default:</i>

ClassificationIndexEntry

Type:

Class

Status:

Proposed. Version 1.0. Phase 1.0.

Package: Concepts *Keywords:*
Detail: Created on 09/12/2013. Last modified on 29/12/2013.
GUID: {F40B931A-C7AB-4678-B27A-F68D0F974F07}

Definition: A Classification Index Entry is a word or a short text (e.g. the name of a locality, an economic activity or an occupational title) describing a type of object/unit or object property to which a Classification Item applies, together with the code of the corresponding Classification Item. Each Classification Index Entry typically refers to one item of the Statistical Classification. Although a Classification Index Entry may be associated with a Classification Item at any Level of a Statistical Classification, Classification Index Entries are normally associated with items at the lowest Level.

Explanatory Text: A Classification Item is a subtype of Node. The relationship between Classification Item and Classification Index Entry can also be extended to include the other Node types - Code Item and Category Item.

Custom Properties

- isActive = False

Connections

Connector	Source	Target	Notes
Aggregation groups Source -> Destination	Public ClassificationIndexEntr y	Public ClassificationIndex	
Aggregation groups Source -> Destination	Public Node	Public ClassificationIndexEntr y	
Aggregation has Source -> Destination	Public ClassificationIndexEntr y	Public ClassificationFamily	
Aggregation has Source -> Destination	Public ClassificationItem	Public ClassificationIndexEntr y	

Attributes

Attribute	Notes	Constraints and tags
CodingInstructions String Private [0..n]	Additional information which drives the coding process. Required when coding is dependent upon one or many other factors.	<i>Default:</i>
Text String Private	Text describing the type of object/unit or object property.	<i>Default:</i>

Attribute	Notes	Constraints and tags
[1..*]		
ValidFrom Date Private [0..1]	Date from which the Classification Index Entry became valid. The date must be defined if the Classification Index Entry belongs to a floating Classification Index.	<i>Default:</i>
ValidTo Date Private [0..1]	Date at which the Classification Index Entry became invalid. The date must be defined if the Classification Index Entry belongs to a floating Classification Index and is no longer valid.	<i>Default:</i>

ClassificationItem

Type: **Class Node**

Status: Proposed. Version 1.0. Phase 1.0.

Package: Concepts *Keywords:*

Detail: Created on 05/12/2013. Last modified on 17/12/2013.

GUID: {2D472367-3DC1-4dbe-A462-6BB703DD7C84}

Definition: A Classification Item represents a Category at a certain Level within a Statistical Classification. It defines the content and the borders of the Category. A Unit can be classified to one and only one item at each Level of a Statistical Classification.

Custom Properties

- isActive = False

Connections

Connector	Source	Target	Notes
Generalization Source -> Destination	Public ClassificationItem	Public Node	
Aggregation /contains Source -> Destination	Public ClassificationItem	Public StatisticalClassification	
Aggregation /contains Source -> Destination	Public ClassificationItem	Public StatisticalClassification	
Aggregation /groups Source -> Destination	Public ClassificationItem	Public Level	

Connector	Source	Target	Notes
Aggregation /maps Source -> Destination	Public Map	Public source ClassificationItem	
Aggregation /maps Source -> Destination	Public Map	Public target ClassificationItem	
Aggregation /parent/child Source -> Destination	Public ClassificationItem	Public ClassificationItem	
Aggregation has Source -> Destination	Public ClassificationItem	Public ClassificationIndexEntr y	

Attributes

Attribute	Notes	Constraints and tags
AlternativeNames String Private [0..n]	A Classification Item can be expressed in terms of one or several alternative names. Each alternative name is associated with a name type.	<i>Default:</i>
CaseLawDates Date Private [0..n]	Refers to date of above case laws	<i>Default:</i>
CaseLawDescriptions String Private [0..n]	Refers to descriptions of the above case laws	<i>Default:</i>
CaseLaws String Private [0..n]	Refers to identifiers of one or more case law rulings related to the Classification Item.	<i>Default:</i>
ChangesFromPreviousVersionOfTheStatisticalClassification	Describes the changes, which the item has been subject to from the previous version to the	<i>Default:</i>

Attribute	Notes	Constraints and tags
Classification String Private [0..1]	actual Statistical Classification.	
Code String Private	A Classification Item is identified by an alphabetical, numerical or alphanumeric code, which is in line with the code structure of the classification Level. The code is unique within the Statistical Classification to which the item belongs.	<i>Default:</i>
CurrentlyValid Binary Private [0..1]	If updates are allowed in the Statistical Classification, an item may be restricted in its validity, i.e. it may become valid or invalid after the Statistical Classification has been released. Indicates whether or not the item is currently valid.	<i>Default:</i>
ExplanatoryNotes String Private [0..1]	A Classification Item may be associated with explanatory notes, which further describe and clarify the contents of the Category. Explanatory notes consist of: General note: Contains either additional information about the Category, or a general description of the Category, which is not structured according to the "includes", "includes also", "excludes" pattern. Includes: Specifies the contents of the Category. Includes also: A list of borderline cases, which belong to the described Category. Excludes: A list of borderline cases, which do not belong to the described Category. Excluded cases may contain a reference to the Classification Items to which the excluded cases belong.	<i>Default:</i>
FutureEvents String Private [0..n]	The future events describe a change (or a number of changes) related to an invalid item. These changes may e.g. have turned the now invalid item into one or several successor items. This allows the possibility to follow successors of the item in the future.	<i>Default:</i>
Generated Binary	Indicates whether or not the item has been	<i>Default:</i>

Attribute	Notes	Constraints and tags
Private [0..1]	generated to make the level to which it belongs complete.	
LevelNumber Numeric Private	The number of the Level to which the item belongs.	<i>Default:</i>
LinkedItems Identifier Private [0..n]	Items of other classification versions or variants with which the item is linked, either as source or target, through Correspondence Tables.	<i>Default:</i>
OfficialName String Private	A Classification Item has a name as provided by the owner or maintenance unit. The name describes the content of the category. The name is unique within the Statistical Classification to which the item belongs, except for categories that are identical at more than one level in a hierarchical classification.	<i>Default:</i>
ParentItem Identifier Private [0..1]	The item at the next higher level of the classification Statistical Classification of which the actual item is a sub item.	<i>Default:</i>
SubItems Identifier Private [0..n]	Each item, which is not at the lowest level of the Statistical Classification, might contain one or a number of sub items, i.e. items at the next lower level of the Statistical Classification.	<i>Default:</i>

Attribute	Notes	Constraints and tags
Updates String Private [0..1]	Describes the changes, which the item has been subject to during the life time of the actual Statistical Classification.	<i>Default:</i>
ValidFrom Date Private [0..1]	Date from which the item became valid. The date must be defined if the item belongs to a floating Statistical classification.	<i>Default:</i>
ValidTo Date Private [0..1]	Date at which the item became invalid. The date must be defined if the item belongs to a floating Statistical classification and is no longer valid.	<i>Default:</i>

ClassificationSeries

Type: **Class**

Status: Proposed. Version 1.0. Phase 1.0.

Package: Concepts *Keywords:*

Detail: Created on 09/12/2013. Last modified on 17/12/2013.

GUID: {CC104D84-F737-4119-AA53-3D0E61521ABD}

Definition: A Classification Series is an ensemble of one or more Statistical Classifications, based on the same concept, and related to each other as versions or updates. Typically, these Statistical Classifications have the same name (for example, ISIC or ISCO).

Custom Properties

- isActive = False

Connections

Connector	Source	Target	Notes
Aggregation groups Source -> Destination	Public StatisticalClassification	Public ClassificationSeries	
Aggregation groups Source -> Destination	Public ClassificationSeries	Public ClassificationFamily	

Attributes

Attribute	Notes	Constraints and tags
Context String Private [0..1]	Classification Series can be designed in a specific context.	<i>Default:</i>
Keywords String Private [0..n]	A Classification Series can be associated with one or a number of keywords.	<i>Default:</i>
Objects/UnitsClassified String Private	A Classification Series is designed to classify a specific type of object/unit according to a specific attribute.	<i>Default:</i>
Owners String Private [0..1]	The statistical office or other authority, which created and maintains the Statistical Classification (s) related to the Classification Series. A Classification Series may have several owners.	<i>Default:</i>
SubjectAreas String Private	Areas of statistics in which the Classification Series is implemented.	<i>Default:</i>

Code*Type:**Status:**Package:**Detail:**GUID:***Class Designation**

Proposed. Version 1.1. Phase 1.0.

Concepts *Keywords:*

Created on 27/12/2013. Last modified on 27/12/2013.

{4A5D5B8B-F7AC-4e8c-8198-DD5CFE2692DF}

Definition: A Designation for a Category.

Explanatory Text: Codes are unique within their Code List. Example: M (Male) F (Female).

Custom Properties

- isActive = False

Connections

Connector	Source	Target	Notes
Generalization Source -> Destination	Public Code	Public Designation	

CodeItem

Type: **Class Node**
Status: Proposed. Version 1.0. Phase 1.0.
Package: Concepts *Keywords:*
Detail: Created on 05/12/2013. Last modified on 17/12/2013.
GUID: {26054B97-FA1C-47b8-A58A-97E7A9F9F243}

Definition: An element of a Code List.

Explanatory Text: A type of Node particular to a Code List type of Node Set. A Code Item combines the meaning of the included Category with a Code representation.

Custom Properties

- isActive = False

Connections

Connector	Source	Target	Notes
Generalization Source -> Destination	Public CodeItem	Public Node	
Aggregation /contains Source -> Destination	Public CodeItem	Public CodeList	

CodeList

Type: **Class NodeSet**
Status: Proposed. Version 1.0. Phase 1.0.
Package: Concepts *Keywords:*
Detail: Created on 05/12/2013. Last modified on 17/12/2013.

GUID: {7BA3F6E9-55C9-46ed-9E9D-A5963C5FCF96}

Definition: A list of Categories where each Category has a predefined Code assigned to it.

Explanatory Text: A kind of Node Set for which the Category contained in each Node has a Code assigned as a Designation.

For example:

1 - Male

2 - Female

Custom Properties

- isActive = False

Connections

Connector	Source	Target	Notes
Generalization Source -> Destination	Public CodeList	Public NodeSet	
Aggregation /contains Source -> Destination	Public CodeItem	Public CodeList	
Aggregation takesValuesFrom Source -> Destination	Public CodeList	Public EnumeratedValueDomain	

CodeVale

Type:

Class **Sign**

Status:

Proposed. Version 1.1. Phase 1.0.

Package:

Concepts *Keywords:*

Detail:

Created on 27/12/2013. Last modified on 27/12/2013.

GUID:

{C87AE28B-FBAB-4170-A291-F41E62A823ED}

Definition: An alpha-numeric string used to represent a Code.

Explanatory Text: A Code Value is a subtype of Sign - a way of denoting the value of a Code. This is a kind of Sign used for Codes.

Custom Properties

- isActive = False

Connections

Connector	Source	Target	Notes
Generalization	Public	Public	

Connector	Source	Target	Notes
Source -> Destination	CodeVale	Sign	

Attributes

Attribute	Notes	Constraints and tags
Value String Private	The value which is used to denote the code.	Default:

Concept

Type: **Class**
Status: Proposed. Version 1.0. Phase 1.0.
Package: Concepts **Keywords:**
Detail: Created on 09/12/2013. Last modified on 27/12/2013.
GUID: {FDCA03AA-494E-48cd-8ECF-0F51FDF5E0EA}

Definition: Unit of thought differentiated by characteristics.

Custom Properties

- isActive = False

Connections

Connector	Source	Target	Notes
Generalization Source -> Destination	Public UnitType	Public Concept	
Generalization Source -> Destination	Public Variable	Public Concept	
Generalization Source -> Destination	Public Population	Public Concept	
Generalization Source -> Destination	Public Category	Public Concept	
Generalization Source -> Destination	Public InstanceVariable	Public Concept	
Generalization Source -> Destination	Public RepresentedVariable	Public Concept	
Aggregation has	Public	Public	

Connector	Source	Target	Notes
Source -> Destination	Concept	ConceptSystem	
Aggregation isBasedOn Source -> Destination	Public Concept	Public NodeSet	
Aggregation isInformedBy Unspecified	Public Concept	Public ChangeDefinition	
Aggregation measures Unspecified	Public Concept	Public Variable	
Aggregation takesMeaningFrom Source -> Destination	Public Concept	Public Designation	

Attributes

Attribute	Notes	Constraints and tags
Definition String Private [1..*]	Representation of a concept by a descriptive statement which serves to differentiate it from related concepts.	<i>Default:</i>

ConceptSystem

Type: **Class**
Status: Proposed. Version 1.0. Phase 1.0.
Package: Concepts *Keywords:*
Detail: Created on 09/12/2013. Last modified on 17/12/2013.
GUID: {92DC8AD6-7347-4f32-B26A-7BB5FCB89739}

Definition: Set of Concepts structured by the relations among them.

Explanatory Text: Here are 2 examples 1) Concept of Sex: Male, Female, Other 2) ISIC (the list is too long to write down)

Custom Properties

- isActive = False

Connections

Connector	Source	Target	Notes
Aggregation groups Source -> Destination	Public ConceptSystem	Public SubjectField	

Connector	Source	Target	Notes
Aggregation has Source -> Destination	Public Concept	Public ConceptSystem	

ConceptualDomain

Type: **Class**
Status: Proposed. Version 1.0. Phase 1.0.
Package: Concepts *Keywords:*
Detail: Created on 09/12/2013. Last modified on 29/12/2013.
GUID: {E084E18A-A30A-4dab-B3DA-8A7E1B49DF95}

Definition: Set of valid Concepts.

Explanatory Text: The Concepts can be described by either enumeration or by an expression.

Custom Properties

- isActive = False

Connections

Connector	Source	Target	Notes
Generalization Source -> Destination	Public DescribedConceptualD omain	Public ConceptualDomain	
Generalization Source -> Destination	Public EnumeratedConceptual Domain	Public ConceptualDomain	
Association correspondence Unspecified	Public ValueDomain	Public ConceptualDomain	
Aggregation uses Source -> Destination	Public ConceptualDomain	Public Variable	

CorrespondenceTable

Type: **Class**
Status: Proposed. Version 1.0. Phase 1.0.
Package: Concepts *Keywords:*
Detail: Created on 09/12/2013. Last modified on 17/12/2013.
GUID: {22FDD6BD-4E42-4c59-A940-2505C969507C}

Definition: A Correspondence Table expresses the relationship between two Statistical Classifications. These are

typically: two versions from the same Classification Series; Statistical Classifications from different Classification Series; a variant and the version on which it is based; or, different versions of a variant. In the first and last examples, the Correspondence Table facilitates comparability over time. Correspondence relationships are shown in both directions.

Explanatory Text: A Statistical Classification is a subtype of Node Set. The relationship between Statistical Classification and Correspondence Table can also be extended to include the other Node Sets - Code List and Category Set.

Custom Properties

- isActive = False

Connections

Connector	Source	Target	Notes
Aggregation /compares Source -> Destination	Public StatisticalClassification	Public CorrespondenceTable	
Aggregation compares Source -> Destination	Public NodeSet	Public CorrespondenceTable	
Aggregation contains Source -> Destination	Public Map	Public CorrespondenceTable	

Attributes

Attribute	Notes	Constraints and tags
ContactPersons String Private [0..n]	The person(s) who may be contacted for additional information about the Correspondence Table.	<i>Default:</i>
Floating String Private [0..1]	If the source and/or target Statistical Classifications of a correspondence table are floating classifications, the date of the correspondence table must be noted. The correspondence table expresses the relationships between the two Statistical Classifications as they existed on the date specified in the table.	<i>Default:</i>
MaintenanceUnit String Private [0..1]	The unit or group of persons who are responsible for the Correspondence Table, i.e. for maintaining and updating it.	<i>Default:</i>

Attribute	Notes	Constraints and tags
Owners String Private [0..1]	The statistical office, other authority or section that created and maintains the Correspondence Table. A Correspondence Table may have several owners.	<i>Default:</i>
Publications String Private [0..n]	A list of the publications in which the Correspondence Table has been published.	<i>Default:</i>
RelationshipType String Private [0..1]	A correspondence can define a 1:1, 1:N, N:1 or M:N relationship between source and target items.	<i>Default:</i>
Source ID Private [0..n]	The Statistical Classification from which the correspondence is made.	<i>Default:</i>
SourceLevel ID Private [0..1]	The correspondence is normally restricted to a certain Level in the source Statistical Classification. In this case, target items are assigned only to source items on the given level. If no level is indicated, target items can be assigned to any level of the source Statistical Classification.	<i>Default:</i>
Target ID Private [0..n]	The Statistical Classification(s) to which the correspondence is directed. There may be multiple Target Statistical Classifications associated with the Correspondence Table.	<i>Default:</i>
TargetLevel ID Private [0..n]	The correspondence is normally restricted to a certain Level in the target Statistical Classification. In this case, source items are assigned only to target items on the given level. If no level is indicated, source items can	<i>Default:</i>

Attribute	Notes	Constraints and tags
	be assigned to any level of the target Statistical Classification.	

Datum

Type: **Class**
Status: Proposed. Version 1.0. Phase 1.0.
Package: Concepts *Keywords:*
Detail: Created on 09/12/2013. Last modified on 17/12/2013.
GUID: {C351447B-2407-41a4-80E0-377DFE514AE9}

Definition: A value.

Explanatory Text: A Datum is the actual instance of data that was collected or derived. It is the value which populates a Data Point. A Datum is the value found in a cell of a table.

Custom Properties

- isActive = False

Connections

Connector	Source	Target	Notes
Aggregation has Source -> Destination	Public Datum	Public DataPoint	

DescribedConceptualDomain

Type: **Class** **ConceptualDomain**
Status: Proposed. Version 1.0. Phase 1.0.
Package: Concepts *Keywords:*
Detail: Created on 09/12/2013. Last modified on 23/01/2014.
GUID: {9AD09E2E-6051-49fa-BD5D-57D60E83C323}

Definition: A Conceptual Domain defined by an expression.

Explanatory Text: For example: All real numbers between 0 and 1.

Custom Properties

- isActive = False

Connections

Connector	Source	Target	Notes
Generalization	Public	Public	

Connector	Source	Target	Notes
Source -> Destination	DescribedConceptualDomain	ConceptualDomain	
Association /correspondence Unspecified	Public DescribedValueDomain	Public DescribedConceptualDomain	

DescribedValueDomain

Type: **Class** ValueDomain

Status: Proposed. Version 1.0. Phase 1.0.

Package: Concepts *Keywords:*

Detail: Created on 09/12/2013. Last modified on 17/12/2013.

GUID: {D82328A0-C5CE-4b39-9801-16E654BA1B9C}

Definition: A Value Domain defined by an expression.

Explanatory Text: For example: All real decimal numbers between 0 and 1.

Synonyms: Non-enumerated value domain

Custom Properties

- isActive = False

Connections

Connector	Source	Target	Notes
Generalization Source -> Destination	Public DescribedValueDomain	Public ValueDomain	
Association /correspondence Unspecified	Public DescribedValueDomain	Public DescribedConceptualDomain	

Attributes

Attribute	Notes	Constraints and tags
DataType String Private		<i>Default:</i>
UnitOfMeasure String Private	Units by which some quantity is measured	<i>Default:</i>

Attribute	Notes	Constraints and tags

Designation

Type: **Class**
Status: Proposed. Version 1.0. Phase 1.0.
Package: Concepts *Keywords:*
Detail: Created on 05/12/2013. Last modified on 17/12/2013.
GUID: {2B5CB11C-139F-4477-8292-BE890A14FD28}

Definition: The name given to an object for identification.

Explanatory Text: The association of a Concept with a Sign that denotes it.

Custom Properties

- isActive = False

Connections

Connector	Source	Target	Notes
Generalization Source -> Destination	Public Code	Public Designation	
Aggregation contains Source -> Destination	Public Designation	Public Node	
Aggregation encodes Source -> Destination	Public Designation	Public Sign	
Aggregation takesMeaningFrom Source -> Destination	Public Concept	Public Designation	

EnumeratedConceptualDomain

Type: **Class** **ConceptualDomain**
Status: Proposed. Version 1.0. Phase 1.0.
Package: Concepts *Keywords:*
Detail: Created on 09/12/2013. Last modified on 23/01/2014.
GUID: {E80B3058-7298-4ba2-A5FF-105B231AE90A}

Definition: A Conceptual Domain expressed as a list of Categories

Explanatory Text: For instance, the Sex Categories: 'Male' and 'Female'

Custom Properties

- isActive = False

Connections

Connector	Source	Target	Notes
Generalization Source -> Destination	Public EnumeratedConceptual Domain	Public ConceptualDomain	
Association /correspondence Unspecified	Public EnumeratedValueDom ain	Public EnumeratedConceptual Domain	
Aggregation contains Source -> Destination	Public CategorySet	Public EnumeratedConceptual Domain	

EnumeratedValueDomain

Type: **Class ValueDomain**

Status: Proposed. Version 1.0. Phase 1.0.

Package: Concepts *Keywords:*

Detail: Created on 09/12/2013. Last modified on 27/12/2013.

GUID: {95B00396-AE21-4b49-89EA-73ED07FC07A3}

Definition: A Value Domain expressed as a list of Categories and associated Codes.

Explanatory Text: Example - Sex Codes <m, male>; <f, female>; <o, other>.

Custom Properties

- isActive = False

Connections

Connector	Source	Target	Notes
Generalization Source -> Destination	Public EnumeratedValueDom ain	Public ValueDomain	
Association /correspondence Unspecified	Public EnumeratedValueDom ain	Public EnumeratedConceptual Domain	
Aggregation takesValuesFrom	Public CodeList	Public EnumeratedValueDom	

Connector	Source	Target	Notes
Source -> Destination		ain	

InstanceVariable

Type: **Class Concept**

Status: Proposed. Version 1.0. Phase 1.0.

Package: Concepts *Keywords:*

Detail: Created on 09/12/2013. Last modified on 29/12/2013.

GUID: {B24EC928-2A7A-4240-AEC0-41FCEF0C4504}

Definition: The use of a Represented Variable within a Data Set. It may include information about the source of the data.

Explanatory Text: The Instance Variable is used to describe actual instances of data that have been collected. Here are 3 examples:

- 1) Gender: Dan Gillman has gender <m, male>, Arofan Gregory has gender<m, male>, etc.
- 2) Number of employees: Microsoft has 90,000 employees; IBM has 433,000 employees, etc.
- 3) Endowment: Johns Hopkins has endowment of <3, \$1,000,000 and above>, Yale has endowment of <3, \$1,000,000 and above>, etc.

Custom Properties

- isActive = False

Connections

Connector	Source	Target	Notes
Generalization Source -> Destination	Public InstanceVariable	Public Concept	
Aggregation has Source -> Destination	Public identifier InstanceVariable	Public DataPoint	
Aggregation has Source -> Destination	Public measure InstanceVariable	Public DataPoint	
Aggregation has Source -> Destination	Public attribute InstanceVariable	Public DataPoint	
Aggregation measures Source -> Destination	Public Population	Public InstanceVariable	
Aggregation populates Source -> Destination	Public InstanceVariable	Public InstanceQuestion	
Aggregation takesMeaningFrom Source -> Destination	Public RepresentedVariable	Public InstanceVariable	

Level

Type: **Class**
Status: Proposed. Version 1.0. Phase 1.0.
Package: Concepts **Keywords:**
Detail: Created on 05/12/2013. Last modified on 17/12/2013.
GUID: {0F9B8803-7404-499e-B218-0738EBB61ECB}

Definition: A Statistical Classification has a structure which is composed of one or several Levels. A Level often is associated with a Concept, which defines it. In a hierarchical classification the Classification Items of each Level but the highest are aggregated to the nearest higher Level. A linear classification has only one Level.

Explanatory Text: A Statistical Classification is a subtype of Node Set. The relationship between Statistical Classification and Level can also be extended to include the other Node Set types - Code List and Category Set.

Custom Properties

- isActive = False

Connections

Connector	Source	Target	Notes
Aggregation /groups Source -> Destination	Public ClassificationItem	Public Level	
Aggregation /has Source -> Destination	Public Level	Public StatisticalClassification	
Aggregation groups Source -> Destination	Public Node	Public Level	
Aggregation has Source -> Destination	Public Level	Public NodeSet	Invariant {1..* where NodeSet is StatisticalClassification }

Attributes

Attribute	Notes	Constraints and tags
CodeStructure String Private [0..1]	Indicates how the code is constructed of numbers, letters and separators.	<i>Default:</i>
CodeType String Private	Indicates whether the item code at the Level is alphabetical, numerical or alphanumeric.	<i>Default:</i>

Attribute	Notes	Constraints and tags
[0..1]		
Description String Private [0..1]	Text describing the content and particular purpose of the Level.	<i>Default:</i>
DummyCode String Private [0..1]	Rule for the construction of dummy codes from the codes of the next higher level (used when one or several categories are the same in two consecutive levels).	<i>Default:</i>
Items String Private [1..n]	An ordered list of the Categories (Classification Items) that constitute the Level.	<i>Default:</i>
LevelName String Private [0..1]	The name given to the Level.	<i>Default:</i>
LevelNumber String Private [0..1]	The number associated with the Level. Levels are numbered consecutively starting with level 1 at the highest (most aggregated) Level.	<i>Default:</i>
NumberOfItems String Private [0..1]	The number of items (Categories) at the Level.	<i>Default:</i>

Map

Type: **Class**
Status: Proposed. Version 1.0. Phase 1.0.
Package: Concepts **Keywords:**
Detail: Created on 09/12/2013. Last modified on 17/12/2013.
GUID: {D7CB6620-00FD-45da-9609-18D4885C2541}

Definition: A Map is an expression of the relation between a Classification Item in a source Statistical Classification and a corresponding Classification Item in the target Statistical Classification. The Map should specify whether the relationship between the two Classification Items is partial or complete. Depending on the relationship type of the Correspondence Table, there may be several Maps for a single source or target item.

Explanatory Text: A Classification Item is a subtype of Node. The relationship between Classification Item and Map can also be extended to include the other types of Node - Code Item and Category Item.

Custom Properties

- isActive = False

Connections

Connector	Source	Target	Notes
Aggregation /maps Source -> Destination	Public Map	Public source ClassificationItem	
Aggregation /maps Source -> Destination	Public Map	Public target ClassificationItem	
Aggregation contains Source -> Destination	Public Map	Public CorrespondenceTable	
Aggregation maps Source -> Destination	Public target Node	Public Map	
Aggregation maps Source -> Destination	Public source Node	Public Map	

Attributes

Attribute	Notes	Constraints and tags
ValidFrom Date Private [0..1]	Date from which the Map became valid. The date must be defined if the Map belongs to a floating correspondence table.	<i>Default:</i>
ValidTo Date Private	Date at which the Map became invalid. The date must be defined if the Map belongs to a floating correspondence table and is no longer	<i>Default:</i>

Attribute	Notes	Constraints and tags
[0..1]	valid.	

Node

Type:

Class

Status:

Proposed. Version 1.0. Phase 1.0.

Package:

Concepts *Keywords:*

Detail:

Created on 05/12/2013. Last modified on 17/12/2013.

GUID:

{5BBCF622-F240-4c28-990E-9E238A2F300F}

Definition: A combination of a Category and related attributes.

Explanatory Text: A Node is created as a Category, Code or Classification Item for the purpose of defining the situation in which the Category is being used.

Custom Properties

- isActive = False

Connections

Connector	Source	Target	Notes
Generalization Source -> Destination	Public ClassificationItem	Public Node	
Generalization Source -> Destination	Public CodeItem	Public Node	
Generalization Source -> Destination	Public CategoryItem	Public Node	
Aggregation contains Source -> Destination	Public Node	Public NodeSet	
Aggregation contains Source -> Destination	Public Designation	Public Node	
Aggregation groups Source -> Destination	Public Node	Public Level	
Aggregation groups Source -> Destination	Public Node	Public ClassificationIndexEntry	
Aggregation maps Source -> Destination	Public target Node	Public Map	
Aggregation maps	Public source	Public	

Connector	Source	Target	Notes
Source -> Destination	Node	Map	
Aggregation parent/child Source -> Destination	Public Node	Public Node	
Aggregation part/whole Source -> Destination	Public Node	Public Node	
Aggregation takesMeaningFrom Source -> Destination	Public Category	Public Node	

Attributes

Attribute	Notes	Constraints and tags
AggregationType String Private [0..1]	To define the parent/child relationship between Nodes, it tells us whether we are applying the part whole relationship, or the super/sub type relationships.	<i>Default:</i>
Alias String Private [0..*]	A type of explanatory note that can be used to define alternative labels for the category contained within the Node.	<i>Default:</i>
Annotation String Private [0..*]	A human-readable internal note intended for the developers/maintainers of GSIM.	<i>Default:</i>

NodeSet

Type:

Class

Status:

Proposed. Version 1.0. Phase 1.0.

Package:

Concepts *Keywords:*

Detail:

Created on 05/12/2013. Last modified on 17/12/2013.

GUID:

{90AA7367-BA6E-4e6e-B2B5-B6B151F37DC5}

Definition: A set of Nodes.

Explanatory Text: Node Set is a kind of Concept System. Here are 2 examples:

1. Sex Categories
 - Male
 - Female
 - Other

2. Sex Codes
 - <m, male>
 - <f, female>
 - <o, other>

Custom Properties

- isActive = False

Connections

Connector	Source	Target	Notes
Generalization Source -> Destination	Public StatisticalClassification	Public NodeSet	
Generalization Source -> Destination	Public CodeList	Public NodeSet	
Generalization Source -> Destination	Public CategorySet	Public NodeSet	
Aggregation compares Source -> Destination	Public NodeSet	Public CorrespondenceTable	
Aggregation contains Source -> Destination	Public Node	Public NodeSet	
Aggregation has Source -> Destination	Public Level	Public NodeSet	<u>Invariant</u> {1..* where NodeSet is StatisticalClassification }
Aggregation has Source -> Destination	Public ClassificationIndex	Public NodeSet	
Aggregation isBasedOn Source -> Destination	Public Concept	Public NodeSet	
Aggregation relatesTo Unspecified	Public NodeSet	Public NodeSet	

Attributes

Attribute	Notes	Constraints and tags
-----------	-------	----------------------

Attribute	Notes	Constraints and tags
Agency EntityDesignator Private	The organization or legal entity which owns and maintains the object.	<i>Default:</i>
Annotation String Private [0..n]	A human-readable internal note intended for the developers/maintainers of GSIM.	<i>Default:</i>
ValidFrom Date Private [0..1]	The effective date on which the object is published.	<i>Default:</i>
ValidTo Date Private [0..1]	The effective date on which the object is withdrawn from publication.	<i>Default:</i>
Version VersionDesignator Private	The version of the object assigned by the owning agency.	<i>Default:</i>

Population

Type:

Class **Concept**

Status:

Proposed. Version 1.0. Phase 1.0.

Package:

Concepts *Keywords:*

Detail:

Created on 09/12/2013. Last modified on 17/12/2013.

GUID:

{E2B26D73-2C59-4784-BF0F-4F25DE305AFE}

Definition: The total membership of a defined class of people, objects or events.

Explanatory Text: A Population is used to describe the total membership of a group of people, objects or events based on characteristics, e.g. time and geographic boundaries.

Here are 3 examples –

1. US adult persons on 13 November 1956
2. US computer companies at the end of 2012
3. Universities in the US 1 January 2011.

Custom Properties

- isActive = False

Connections

Connector	Source	Target	Notes
Generalization Source -> Destination	Public Population	Public Concept	
Aggregation contains Source -> Destination	Public Unit	Public Population	
Aggregation isInformedBy Unspecified	Public Population	Public ChangeDefinition	
Aggregation isObservationOf Source -> Destination	Public Population	Public DimensionalDataPoint	
Aggregation isSpecificationOf Unspecified	Public UnitType	Public Population	
Aggregation measures Source -> Destination	Public Population	Public InstanceVariable	
Aggregation parent/child Source -> Destination	Public Population	Public Population	

Attributes

Attribute	Notes	Constraints and tags
Geography String Private [0..1]	The geographical area to which the population is associated	<i>Default:</i>
ReferencePeriod	The time period to which the population is	<i>Default:</i>

Attribute	Notes	Constraints and tags
DateRange Private [0..1]	associated	

RepresentedVariable

Type: **Class Concept**

Status: Proposed. Version 1.0. Phase 1.0.

Package: Concepts *Keywords:*

Detail: Created on 09/12/2013. Last modified on 29/12/2013.

GUID: {6E48DDBA-9A39-4b56-B935-95A456F203CC}

Definition: A combination of a characteristic of a population to be measured and how that measure will be represented.

Explanatory Text:

Example:

The pair (Number of Employees, Integer), where "Number of Employees" is the characteristic of the population (Variable) and "Integer" is how that measure will be represented (Value Domain).

Custom Properties

- isActive = False

Connections

Connector	Source	Target	Notes
Generalization Source -> Destination	Public RepresentedVariable	Public Concept	
Aggregation isDefinedBy Source -> Destination	Public RepresentedVariable	Public DataStructureComponent	
Aggregation isDefinedBy Source -> Destination	Public RepresentedVariable	Public ReferentialMetadataAttribute	
Aggregation measures Source -> Destination	Public RepresentedVariable	Public ValueDomain	
Aggregation takesMeaningfrom Source -> Destination	Public Variable	Public RepresentedVariable	

Connector	Source	Target	Notes
Aggregation takesMeaningFrom Source -> Destination	Public RepresentedVariable	Public InstanceVariable	

Sign

Type: **Class**
Status: Proposed. Version 1.1. Phase 1.0.
Package: Concepts *Keywords:*
Detail: Created on 27/12/2013. Last modified on 27/12/2013.
GUID: {95B9997E-FB74-4e03-80A8-341A8D273B90}

Definition: Something that suggests the presence or existence of a fact, condition, or quality.

Explanatory Text: It is a perceivable object. This object is used to denote a Concept as a Designation.

Custom Properties

- isActive = False

Connections

Connector	Source	Target	Notes
Generalization Source -> Destination	Public CodeVale	Public Sign	
Aggregation encodes Source -> Destination	Public Designation	Public Sign	

Attributes

Attribute	Notes	Constraints and tags
Value String Private	A human-readable value for the object.	<i>Default:</i>

StatisticalClassification

Type: **Class NodeSet**
Status: Proposed. Version 1.0. Phase 1.0.
Package: Concepts *Keywords:*
Detail: Created on 09/12/2013. Last modified on 29/12/2013.

GUID: {75C2ADDD-97A3-401b-BE67-B23AB8CA9DEE}

Definition: A Statistical Classification is a set of Categories which may be assigned to one or more variables registered in statistical surveys or administrative files, and used in the production and dissemination of statistics. The Categories at each Level of the classification structure must be mutually exclusive and jointly exhaustive of all objects/units in the population of interest.

Explanatory Text: The Categories are defined with reference to one or more characteristics of a particular population of units of observation. A Statistical Classification may have a flat, linear structure or may be hierarchically structured, such that all Categories at lower Levels are sub-Categories of Categories at the next Level up. Categories in Statistical Classifications are represented in the information model as Classification Items.

Custom Properties

- isActive = False

Connections

Connector	Source	Target	Notes
Generalization Source -> Destination	Public StatisticalClassification	Public NodeSet	
Aggregation /compares Source -> Destination	Public StatisticalClassification	Public CorrespondenceTable	
Aggregation /contains Source -> Destination	Public ClassificationItem	Public StatisticalClassification	
Aggregation /contains Source -> Destination	Public ClassificationItem	Public StatisticalClassification	
Aggregation /has Source -> Destination	Public Level	Public StatisticalClassification	
Aggregation groups Source -> Destination	Public StatisticalClassification	Public ClassificationSeries	
Aggregation has Source -> Destination	Public ClassificationIndex	Public StatisticalClassification	
Aggregation isBasedOn Unspecified	Public StatisticalClassification	Public StatisticalClassification	

Attributes

Attribute	Notes	Constraints and tags
ChangesFromBaseStatisticalClassification String Private [0..n]	Describes the relationship between the variant and its base Statistical Classification, including regroupings, aggregations added and extensions.	<i>Default:</i>

Attribute	Notes	Constraints and tags
ChangesFromPreviousVersionOrUpdate String Private [0..n]	A summary description of the nature and content of changes from the preceding version or update. Specific changes are recorded in the Classification Item object under the “Changes from previous version and updates” attribute.	<i>Default:</i>
ContactPersons String Private [0..n]	Person(s) who may be contacted for additional information about the Statistical Classification.	<i>Default:</i>
Copyright String Private [0..n]	Statistical Classifications may have restricted copyrights. Such Statistical Classifications might be excluded from downloading. Notes the copyright statement that should be displayed in official publications to indicate the copyright owner.	<i>Default:</i>
Current String Private [0..1]	Indicates whether or not the Statistical Classification is currently valid.	<i>Default:</i>
DerivedFrom String Private [0..1]	A Statistical Classification can be derived from one of the classification versions of another Classification Series. The derived Statistical Classification can either inherit the structure of the classification version from which it is derived, usually adding more detail, or use a large part of its Classification Items, rearranging them in a different structure. Indicates the classification version from which the actual Statistical Classification is derived.	<i>Default:</i>
DisseminationAllowed String Private [0..1]	Indicates whether or not the Statistical Classification may be published or otherwise disseminated (e.g. electronic dissemination).	<i>Default:</i>
Floating String Private	Indicates if the Statistical Classification is a floating classification. In a floating statistical	<i>Default:</i>

Attribute	Notes	Constraints and tags
[0..1]	classification, a validity period should be defined for all Classification Items which will allow the display of the item structure and content at different points of time.	
Introduction String Private [0..1]	The introduction provides a detailed description of the Statistical Classification, the background for its creation, the classification variable and objects/units classified, classification rules etc.	<i>Default:</i>
LanguagesAvailable String Private [0..n]	A Statistical Classification can exist in one or several languages. Indicates the languages available, whether the version is completely or partially translated, and which part is available in which language.	<i>Default:</i>
LegalBase String Private [0..n]	Indicates that the Statistical Classification is covered by a legal act or by some other formal agreement.	<i>Default:</i>
MaintenanceUnit String Private [0..1]	The unit or group of persons within the organisation who are responsible for the Statistical Classification (i.e, for maintaining, updating and changing it).	<i>Default:</i>
NameTypes String Private [0..n]	A list of the defined types of alternative item names available for the Statistical Classification. Each name type refers to a list of alternative item names.	<i>Default:</i>
Predecessor String Private [0..1]	For those Statistical Classifications that are versions or updates, notes the preceding Statistical Classification of which the actual Statistical Classification is the successor.	<i>Default:</i>

Attribute	Notes	Constraints and tags
Publications String Private [0..n]	A list of the publications, including print, PDF, HTML and other electronic formats, in which the Statistical Classification has been published.	<i>Default:</i>
PurposeOfVariant String Private [0..1]	If the Statistical Classification is a variant, notes the specific purpose for which it was developed.	<i>Default:</i>
ReleaseDate Date Private [0..1]	Date on which the Statistical Classification was released.	<i>Default:</i>
Successor String Private [0..1]	Notes the Statistical Classification that superseded the actual Statistical Classification.	<i>Default:</i>
TerminationDate Date Private [0..1]	Date on which the Statistical Classification was superseded by a successor version or otherwise ceased to be valid.	<i>Default:</i>
Update String Private [0..1]	Indicates if the Statistical Classification is an update.	<i>Default:</i>
Updates String Private [0..n]	Summary description of changes which have occurred since the most recent classification version or classification update came into force.	<i>Default:</i>

Attribute	Notes	Constraints and tags
UpdatesPossible String Private [0..1]	Indicates whether or not updates are allowed within the classification version i.e. without leading to a new version. Indicate here what structural changes, if any, are permissible within a version. Note whether Classification Items can be added to the structure and whether they can be revalidated or invalidated. Such changes are more likely to be permissible in floating classifications. Also indicate whether changes to such things as Classification Item names and explanatory notes that do not involve structural changes are permissible within a version.	<i>Default:</i>
Variant String Private [0..1]	For those Statistical Classifications that are variants, notes the Statistical Classification on which it is based and any subsequent versions of that Statistical Classification to which it is also applicable.	<i>Default:</i>
VariantsAvailable String Private [0..1]	Identifies any variants associated with this version.	<i>Default:</i>
Version String Private [0..1]	Indicates if the Statistical Classification is a version.	<i>Default:</i>

SubjectField

Type: **Class**
Status: Proposed. Version 1.0. Phase 1.0.
Package: Concepts *Keywords:*
Detail: Created on 09/12/2013. Last modified on 17/12/2013.
GUID: {4A778B53-42FD-4399-919A-598896E225EA}

Definition: One or more Concept Systems used for the grouping of Concepts and Categories for the production of statistics.

Explanatory Text: A Subject Field is a field of special knowledge under which a set of Concepts and their

Designations is used. For example, labour market, environmental expenditure, tourism, etc.

Custom Properties

- isActive = False

Connections

Connector	Source	Target	Notes
Aggregation groups Source -> Destination	Public ConceptSystem	Public SubjectField	
Aggregation refersTo Unspecified	Public SubjectField	Public InformationRequest	

Unit

Type:

Class

Status:

Proposed. Version 1.0. Phase 1.0.

Package:

Concepts *Keywords:*

Detail:

Created on 16/12/2013. Last modified on 17/12/2013.

GUID:

{00B44ADC-5C8A-4d00-A038-41FAAB746276}

Definition: The object of interest in a Business Process

Explanatory Text: Here are 3 examples - 1. Individual US person (i.e., Arofan Gregory, Dan Gillman, Barack Obama, etc.) 2. Individual US computer companies (i.e., Microsoft, Apple, IBM, etc.) 3. Individual US universities (i.e., Johns Hopkins, University of Maryland, Yale, etc.)

Custom Properties

- isActive = False

Connections

Connector	Source	Target	Notes
Aggregation contains Source -> Destination	Public Unit	Public Population	
Aggregation isObservationOf Source -> Destination	Public Unit	Public DimensionalDataPoint	
Aggregation isObservationOf Source -> Destination	Public Unit	Public UnitDataPoint	
Aggregation isOfType Source -> Destination	Public UnitType	Public Unit	

Connector	Source	Target	Notes

UnitType

Type: **Class** **Concept**

Status: Proposed. Version 1.0. Phase 1.0.

Package: Concepts *Keywords:*

Detail: Created on 09/12/2013. Last modified on 10/01/2014.

GUID: {555B9E3B-EAEA-4e4f-A327-19D039F0E4DB}

Definition: A Unit Type is a class of objects of interest

Explanatory Text: A Unit Type is used to describe a class or group of Units based on a single characteristic, but with no specification of time and geography. For example, the Unit Type of “Person” groups together a set of Units based on the characteristic that they are ‘Persons’.

It concerns not only Unit Types used in dissemination, but anywhere in the statistical process. E.g. using administrative data might involve the use of a fiscal unit.

Synonyms: Object class (ISO 11179)

Custom Properties

- isActive = False

Connections

Connector	Source	Target	Notes
Generalization Source -> Destination	Public UnitType	Public Concept	
Aggregation isDefinedBy Source -> Destination	Public UnitType	Public LogicalRecord	
Aggregation isOfType Source -> Destination	Public UnitType	Public Unit	
Aggregation isSpecificationOf Unspecified	Public UnitType	Public Population	
Aggregation measures Source -> Destination	Public UnitType	Public Variable	

ValueDomain

Type: **Class**

Status: Proposed. Version 1.0. Phase 1.0.
Package: Concepts *Keywords:*
Detail: Created on 09/12/2013. Last modified on 06/10/2014.
GUID: {16A50A4B-2A77-4c08-B45A-7C1440F10273}

Definition: The permitted range of values for a characteristic of a variable

Explanatory Text: The values can be described by enumeration or by an expression

Custom Properties

- isActive = False

Connections

Connector	Source	Target	Notes
Generalization Source -> Destination	Public DescribedValueDomain	Public ValueDomain	
Generalization Source -> Destination	Public EnumeratedValueDomain	Public ValueDomain	
Association correspondence Unspecified	Public ValueDomain	Public ConceptualDomain	
Aggregation has Source -> Destination	Public ValueDomain	Public Question	
Aggregation isConstrainedBy Source -> Destination	Public ValueDomain	Public ReferentialMetadataSubject	
Aggregation measures Source -> Destination	Public RepresentedVariable	Public ValueDomain	
Aggregation represents Source -> Destination	Public Cardinality Allows to know the number of response modalities available for representing a dimension. ValueDomain	Public Dimension	<u>Invariant</u> {DomainValueType}

Variable

Type: **Class Concept**
Status: Proposed. Version 1.0. Phase 1.0.
Package: Concepts *Keywords:*
Detail: Created on 09/12/2013. Last modified on 17/12/2013.

GUID: {4257798A-A241-41b5-B0E1-71423C0EFE01}

Definition: The use of a Concept as a characteristic of a Population intended to be measured.

Explanatory Text: The Variable combines the meaning of a Concept with a Unit Type, to define the characteristic that is to be measured.

Here are 3 examples -

1. Sex of person
2. Number of employees
3. Value of endowment

Custom Properties

- isActive = False

Connections

Connector	Source	Target	Notes
Generalization Source -> Destination	Public Variable	Public Concept	
Aggregation isBasedOn Source -> Destination	Public Variable	Public Question	
Aggregation measures Unspecified	Public Concept	Public Variable	
Aggregation measures Source -> Destination	Public UnitType	Public Variable	
Aggregation takesMeaningfrom Source -> Destination	Public Variable	Public RepresentedVariable	
Aggregation uses Source -> Destination	Public ConceptualDomain	Public Variable	

Exchange

Type: **Package**
Status: Proposed. Version 1.1. Phase 1.0.
Package: Model
Detail: Created on 27/12/2013. Last modified on 27/12/2013
GUID: {07AEF857-5F74-4b51-A95A-4393D197FEFC}

Data_Collection_Dissemination - (Class diagram)

Created By: Chris on 05/12/2013
Last Modified: 06/10/2014

Version: 1.0. *Locked:* False
GUID: {AD724C7F-C701-48a4-AADD-B4750921BD14}

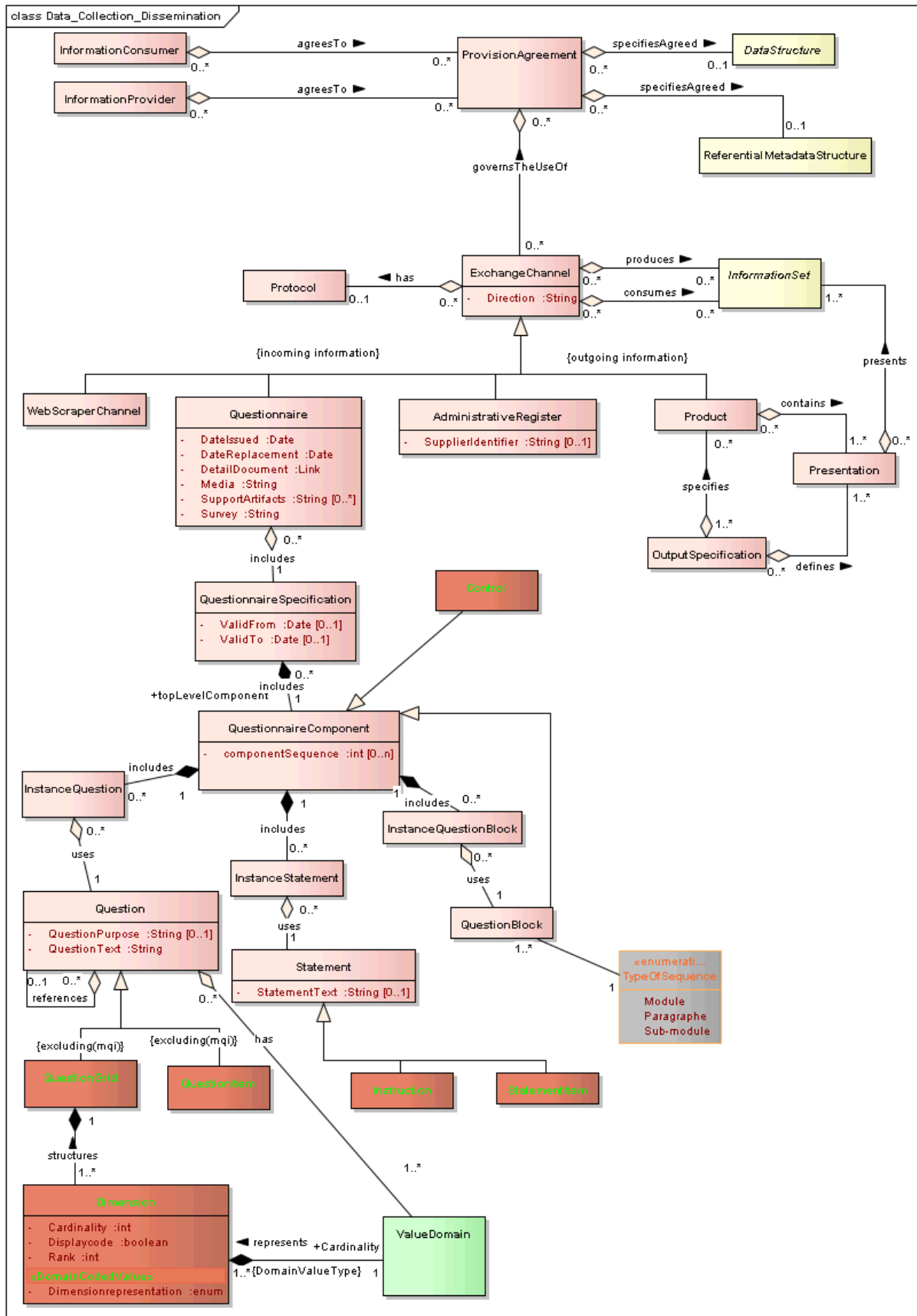


Figure: 14

AdministrativeRegister

Type: Class **ExchangeChannel**
Status: Proposed. Version 1.0. Phase 1.0.
Package: Exchange **Keywords:**
Detail: Created on 10/12/2013. Last modified on 29/12/2013.
GUID: {A9AF00D8-26DB-46a8-BFB0-FA762622EA46}

Definition: A source of administrative information which is obtained from an external organisation (or sometimes from another department of the same organisation)

Explanatory Text: The Administrative Register is a source of administrative information obtained from external organisations. The Administrative Register would be provided under a Provision Agreement with the supplying organisation. This administrative information is usually collected for an organisation's operational purposes, rather than for statistical purposes.

Custom Properties

- isActive = False

Connections

Connector	Source	Target	Notes
Generalization Source -> Destination	Public AdministrativeRegister	Public ExchangeChannel	<u>Invariant</u> {incoming information}

Attributes

Attribute	Notes	Constraints and tags
SupplierIdentifier String Private [0..1]	An identifier for the supplier of the Administrative Register	<i>Default:</i>

Control

Type: Class **QuestionnaireComponent**
Status: Proposed. Version 1.0. Phase 1.0.
Package: Exchange **Keywords:**
Detail: Created on 06/10/2014. Last modified on 06/10/2014.
GUID: {3F7E533C-15A8-45f7-B6A7-6F7DEADFB907}

Definition :

Programmatic control operated by the system on one or more *Value Domains*.

Explanatory note :

A *Control* can compare upstream responses with the current one. It can also act as a programmatic flow controller or trigger a new interaction with the interviewee.

Custom Properties

- isActive = False

Connections

Connector	Source	Target	Notes
Generalization Source -> Destination	Public Control	Public QuestionnaireComponent	

Dimension

Type: **Class**

Status: Proposed. Version 1.0. Phase 1.0.

Package: Exchange *Keywords:*

Detail: Created on 06/10/2014. Last modified on 06/10/2014.

GUID: {8E82359A-8385-4e36-993C-96993DD73473}

Definition: Describes the dimensions of a *QuestionGrid*.

Explanatory Text: It describes each dimension of the grid including dimension rank (for the purpose of identifying a cell address), a text for the dimension, and optional labels and codes used as column and row stubs.

Custom Properties

- isActive = False

Connections

Connector	Source	Target	Notes
Aggregation represents Source -> Destination	Public Cardinality Allows to know the number of response modalities available for representing a dimension. ValueDomain	Public Dimension	<u>Invariant</u> {DomainValueType}
Aggregation structures Source -> Destination	Public Dimension	Public QuestionGrid	

Attributes

Attribute	Notes	Constraints and tags
Cardinality int Private		<i>Default:</i>
Dimensionrepresentation enum Private «DomainCodedValue»	Each dimension represents an information axis as a code list, that is related to a statistical variable	<i>Default:</i>
Displaycode boolean Private		<i>Default:</i>
Rank int Private		<i>Default:</i>

ExchangeChannel

Type: **Class**
Status: Proposed. Version 1.0. Phase 1.0.
Package: Exchange *Keywords:*
Detail: Created on 10/12/2013. Last modified on 06/10/2014.
GUID: {605F6D30-BA6F-4671-8923-59A4F4152B00}

Definition: A means of exchanging data.

Explanatory Text: An abstract object that describes the means to receive (data collection) or send (dissemination) information.

Different Exchange Channels are used for collection and dissemination. Examples of collection Exchange Channel include Questionnaire, Web Scraper Channel and Administrative Register. The only example of a dissemination Exchange Channel currently contained in GSIM is Product. Additional Exchange Channels can be added to the

model as needed by individual organizations.

Custom Properties

- isActive = False

Connections

Connector	Source	Target	Notes
Generalization Source -> Destination	Public WebScrapperChannel	Public ExchangeChannel	
Generalization Source -> Destination	Public Questionnaire	Public ExchangeChannel	
Generalization Source -> Destination	Public AdministrativeRegister	Public ExchangeChannel	<u>Invariant</u> {incoming information}
Generalization Source -> Destination	Public Product	Public ExchangeChannel	<u>Invariant</u> {outgoing information}
Aggregation consumes Unspecified	Public InformationSet	Public ExchangeChannel	
Aggregation governsTheUseOf Unspecified	Public ExchangeChannel	Public ProvisionAgreement	
Aggregation has Source -> Destination	Public Protocol	Public ExchangeChannel	
Aggregation produces Unspecified	Public InformationSet	Public ExchangeChannel	

Attributes

Attribute	Notes	Constraints and tags
Direction String Private	Direction of the exchange channel: collect or disseminate	<i>Default:</i>

InformationConsumer

Type: Class AgentRole

Status: Proposed. Version 1.1. Phase 1.0.
Package: Exchange *Keywords:*
Detail: Created on 05/12/2013. Last modified on 29/12/2013.
GUID: {DEE5DF58-6D3C-40df-A61A-DB1F2AFE50AE}

Definition: A person or organization that consumes disseminated data.

Explanatory Text: The Information Consumer accesses a set of information via a Product (or potentially via another Exchange Channel), which contains one or more Presentations. The Information Consumer's access to the information is subject to a Provision Agreement, which sets out conditions of access.

Custom Properties

- isActive = False

Connections

Connector	Source	Target	Notes
Generalization Source -> Destination	Public InformationConsumer	Public AgentRole	
Aggregation agreesTo Source -> Destination	Public ProvisionAgreement	Public InformationConsumer	

InformationProvider

Type: **Class** **AgentRole**
Status: Proposed. Version 1.1. Phase 1.0.
Package: Exchange *Keywords:*
Detail: Created on 05/12/2013. Last modified on 29/12/2013.
GUID: {35F4BF52-C934-4d91-8802-ACBD1D1F8402}

Definition: An Individual or Organization that provides collected information.

Explanatory Text: An Information Provider possesses sets of information (that it has generated, collected, produced, bought or otherwise acquired) and is willing to supply that information (data or referential metadata) to the statistical office. The two parties use a Provision Agreement to agree the Data Structure and Referential Metadata Structure of the data to be exchanged via an Exchange Channel.

Synonyms: information supplier, data supplier

Custom Properties

- isActive = False

Connections

Connector	Source	Target	Notes
Generalization	Public	Public	

Connector	Source	Target	Notes
Source -> Destination	InformationProvider	AgentRole	
Aggregation agreesTo Source -> Destination	Public ProvisionAgreement	Public InformationProvider	
Aggregation identifies Source -> Destination	Public InformationProvider	Public Scraping Process Map	

InstanceQuestion

Type: **Class**
Status: Proposed. Version 1.1. Phase 1.0.
Package: Exchange **Keywords:**
Detail: Created on 29/12/2013. Last modified on 06/10/2014.
GUID: {DCC1E1FB-4248-453c-9B86-271A8A132CE2}

Definition: The use of a Question in a particular Questionnaire.

Explanatory Text: The Instance Question is the use of a Question in a particular Questionnaire Component. This also includes the use of the Question in a Question Block, which is a particular type of Questionnaire Component.

Attributes: Instance Question inherits all attributes from the Question it is associated with.

Custom Properties

- isActive = False

Connections

Connector	Source	Target	Notes
Aggregation includes Source -> Destination	Public InstanceQuestion	Public QuestionnaireComponent	
Aggregation populates Source -> Destination	Public InstanceVariable	Public InstanceQuestion	
Aggregation uses Source -> Destination	Public Question	Public InstanceQuestion	

InstanceQuestionBlock

Type: **Class**
Status: Proposed. Version 1.1. Phase 1.0.
Package: Exchange **Keywords:**
Detail: Created on 29/12/2013. Last modified on 06/10/2014.
GUID: {1898E14C-3667-4545-88CB-17608E4B80AA}

Definition: The use of a Question Block in a particular Questionnaire.

Explanatory Text: The Instance Question Block is the use of a Question Block in a particular Questionnaire Component. This also includes the use of a Question Block in another Question Block, as it is a particular type of Questionnaire Component.

Attributes: Instance Question Block inherits all attributes from the Question Block it is associated with.

Custom Properties

- isActive = False

Connections

Connector	Source	Target	Notes
Aggregation includes Source -> Destination	Public InstanceQuestionBlock	Public QuestionnaireComponent	
Aggregation uses Source -> Destination	Public QuestionBlock	Public InstanceQuestionBlock	

InstanceStatement

Type: **Class**

Status: Proposed. Version 1.1. Phase 1.0.

Package: Exchange *Keywords:*

Detail: Created on 29/12/2013. Last modified on 06/10/2014.

GUID: {11991988-C68E-42d3-878C-AC57E3659E9E}

Definition: The use of a Statement in a particular Questionnaire.

Explanatory Text: The Instance Statement is the use of a Statement in a particular Questionnaire Component. This also includes the use of the Statement in a Question Block, which is a particular type of Questionnaire Component.

Attributes: Instance Statement inherits all attributes from the Statement it is associated with.

Custom Properties

- isActive = False

Connections

Connector	Source	Target	Notes
Aggregation includes Source -> Destination	Public InstanceStatement	Public QuestionnaireComponent	

Connector	Source	Target	Notes
Aggregation uses Source -> Destination	Public Statement	Public InstanceStatement	

Instruction

Type: Class **Statement**
Status: Proposed. Version 1.0. Phase 1.0.
Package: Exchange **Keywords:**
Detail: Created on 06/10/2014. Last modified on 08/10/2014.
GUID: {D5D40C49-0146-48d9-8FC8-489107075FBB}

Definition: A means for expressing an interaction with the interviewee/interviewer.

Explanatory Text: It can be an instruction, an aid to response, a footnote or a comment (definition, remark, etc.). It should be picked up from a controlled vocabulary created and maintained by Insee.

On one hand, the *Instruction* est is different from the *Statement Item* since it initiates an interaction (i.e. a reaction of) the interviewee/interviewer, for instance, "Please report only the energy expenses from the household".

On the other hand, a *Statement Item* is for information only and does not call any reaction from the interviewer/interviewee. For example, a polite form of address: "Thank you for the time spent to fill in this questionnaire".

It inherits from *Statement*.

Custom Properties

- isActive = False

Connections

Connector	Source	Target	Notes
Generalization Source -> Destination	Public Instruction	Public Statement	

OutputSpecification

Type: Class
Status: Proposed. Version 1.1. Phase 1.0.
Package: Exchange **Keywords:**
Detail: Created on 16/12/2013. Last modified on 29/12/2013.
GUID: {D67D48E0-6265-4d62-A317-FE57ADBC22F4}

Definition: Defines how Information Sets consumed by a Product are presented to Information Consumers.

Explanatory Text: The Output Specification specifies Products and defines the Presentations they contain. The Output Specification may be fully defined during the design process (such as in a paper publication or a predefined web report), or may be a combination of designed specification supplemented by user selections (such as in an online data query tool).

Custom Properties

- isActive = False

Connections

Connector	Source	Target	Notes
Aggregation defines Source -> Destination	Public Presentation	Public OutputSpecification	
Aggregation specifies Unspecified	Public Product	Public OutputSpecification	

Presentation

Type: **Class**
Status: Proposed. Version 1.1. Phase 1.0.
Package: Exchange *Keywords:*
Detail: Created on 16/12/2013. Last modified on 14/01/2014.
GUID: {B4570E0F-B3FF-4097-A526-B78D1E9F0785}

Definition: The way data and referential metadata are presented in a Product.

Explanatory Text: A Product has one or more Presentations, which present data and referential metadata from Information Sets. A Presentation is defined by an Output Specification.

Presentation can be in different forms; e.g. tables, graphs, structured data files.

Examples:

- A table of data. Based on a Data Set, the related Data Structure is used to label the column and row headings for the table. The Data Set is used to populate the cells in the table. Reference metadata is used to populate footnotes and cell notes on the table. Confidentiality rules are applied to the Data Set to suppress any disclosive cells.
- A data file based on a standard (e.g. SDMX).
- A PDF document describing a Classification.
- Any structural metadata object expressed in a standard format (e.g. DDI 3.1 XML).
- A list of Products or services (e.g. a product catalogue or a web services description language (WSDL) file).
- A web page containing Classifications, descriptions of Variables, etc.

Custom Properties

- isActive = False

Connections

Connector	Source	Target	Notes
Aggregation contains	Public	Public	

Connector	Source	Target	Notes
Source -> Destination	Presentation	Product	
Aggregation defines Source -> Destination	Public Presentation	Public OutputSpecification	
Aggregation presents Source -> Destination	Public InformationSet	Public Presentation	

Product

Type: **Class** **ExchangeChannel**
Status: Proposed. Version 1.0. Phase 1.0.
Package: Exchange **Keywords:**
Detail: Created on 10/12/2013. Last modified on 06/10/2014.
GUID: {9DF2E1F5-E6A5-45eb-A237-E6951DB9CCEE}

Definition: A package of content that can be disseminated as a whole.

Explanatory Text: A Product is the only defined type of Exchange Channel for outgoing information. A Product packages Presentations of Information Sets for an Information Consumer. The Product and its Presentations are generated according to Output Specifications, which define how the information from the Information Sets it consumes are presented to the Information Consumer. The Protocol for a Product determines the mechanism by which the Product is disseminated (e.g. website, SDMX web service, paper publication).

A Provision Agreement between the statistics office and the Information Consumer governs the use of a Product by the Information Consumer. The Provision Agreement, which may be explicitly or implicitly agreed, provides the legal or other basis by which the two parties agree to exchange data. In many cases, dissemination Provision Agreements are implicit in the terms of use published by the statistics office.

For static Products (e.g. paper publications), specifications are predetermined. For dynamic products, aspects of specification could be determined by the Information Consumer at run time. Both cases result in Output Specifications specifying Information Set data or referential metadata that will be included in each Presentation within the Product.

Custom Properties

- isActive = False

Connections

Connector	Source	Target	Notes
Generalization Source -> Destination	Public Product	Public ExchangeChannel	<u>Invariant</u> {outgoing information}
Aggregation contains Source -> Destination	Public Presentation	Public Product	
Association isAttachedTo	Public Product	Public StatisticalStudy	

Connector	Source	Target	Notes
Source -> Destination			
Aggregation specifies Unspecified	Public Product	Public OutputSpecification	

Protocol

Type: **Class**
Status: Proposed. Version 1.0. Phase 1.0.
Package: Exchange *Keywords:*
Detail: Created on 10/12/2013. Last modified on 29/12/2013.
GUID: {D8280FFC-32CA-4926-8913-C9317F2BF7EE}

Definition: The mechanism for exchanging information through an Exchange Channel.

Explanatory Text: A Protocol specifies the mechanism (e.g. SDMX web service, data file exchange, web robot, face to face interview, mailed paper form) of exchanging information through an Exchange Channel.

Custom Properties

- isActive = False

Connections

Connector	Source	Target	Notes
Aggregation has Source -> Destination	Public Protocol	Public ExchangeChannel	

ProvisionAgreement

Type: **Class**
Status: Proposed. Version 1.0. Phase 1.0.
Package: Exchange *Keywords:*
Detail: Created on 10/12/2013. Last modified on 29/12/2013.
GUID: {0A2B60DE-7775-4da4-B13A-34EB5BFFFC181}

Definition: The legal or other basis by which two parties agree to exchange data.

Explanatory Text: A Provision Agreement between the statistical organization and the Information Provider (collection) or the Information Consumer(dissemination) governs the use of Exchange Channels. The Provision Agreement, which may be explicitly or implicitly agreed, provides the legal or other basis by which the two parties agree to exchange data. The parties also use the Provision Agreement to agree the Data Structure and Referential Metadata Structure of the information to be exchanged.

Custom Properties

- isActive = False

Connections

Connector	Source	Target	Notes
Aggregation agreesTo Source -> Destination	Public ProvisionAgreement	Public InformationConsumer	
Aggregation agreesTo Source -> Destination	Public ProvisionAgreement	Public InformationProvider	
Aggregation governsTheUseOf Unspecified	Public ExchangeChannel	Public ProvisionAgreement	
Aggregation specifiesAgreed Source -> Destination	Public DataStructure	Public ProvisionAgreement	
Aggregation specifiesAgreed Source -> Destination	Public ReferentialMetadataStr ucture	Public ProvisionAgreement	

Question*Type:***Class***Status:*

Proposed. Version 1.1. Phase 1.0.

*Package:*Exchange *Keywords:**Detail:*

Created on 29/12/2013. Last modified on 06/10/2014.

GUID:

{3C231F79-1049-45e1-A67A-1A3CBEAEB60D}

Definition: Describes the text used to elicit a response for the Concept to be measured.**Explanatory Text:** A Question may be a single question used to obtain a response, or may be a multiple question, a construct which links multiple sub-questions, each with their own response.

A Question also includes a relationship to the Value Domain to document the associated response criteria for the question. A single response question will have one Value Domain associated with it, while a 'multiple question' may have more than one Value Domain.

A Question should be designed with re-use in mind, as it can be used in multiple Questionnaires.

Synonyms: Multiple QuestionCustom Properties

- isActive = False

Connections

Connector	Source	Target	Notes
-----------	--------	--------	-------

Connector	Source	Target	Notes
Generalization Source -> Destination	Public QuestionGrid	Public Question	<u>Invariant</u> {excluding(mqi)}
Generalization Source -> Destination	Public QuestionItem	Public Question	<u>Invariant</u> {excluding(mqi)}
Aggregation has Source -> Destination	Public ValueDomain	Public Question	
Aggregation isBasedOn Source -> Destination	Public Variable	Public Question	
Aggregation references Source -> Destination	Public Question	Public Question	
Aggregation uses Source -> Destination	Public Question	Public InstanceQuestion	

Attributes

Attribute	Notes	Constraints and tags
QuestionPurpose String Private [0..1]	A description of the purpose of the question, whether the question has a specific expected function	<i>Default:</i>
QuestionText String Private	The text which describes the information which is to be obtained	<i>Default:</i>

QuestionBlock

Type: **Class** QuestionnaireComponent
Status: Proposed. Version 1.1. Phase 1.0.
Package: Exchange *Keywords:*
Detail: Created on 29/12/2013. Last modified on 06/10/2014.
GUID: {0886C71D-62C7-48ec-831F-B445CEB02885}

Definition: A set of Questions, Statements or instructions which are used together.

Explanatory Text: A Question Block should be designed for reuse, as it can be used in multiple Questionnaires.

The Question Block is a type of Questionnaire Component. A statistical organization will often have a number of Question Blocks which they reuse in a number of Questionnaires. Examples of Question Blocks include:

- Household Question Block
- Income Question Block
- Employment Question Block

Synonyms: Question Module

Custom Properties

- isActive = False

Connections

Connector	Source	Target	Notes
Generalization Source -> Destination	Public QuestionBlock	Public QuestionnaireComponent	
Association Unspecified	Public TypeOfSequence	Public QuestionBlock	
Aggregation uses Source -> Destination	Public QuestionBlock	Public InstanceQuestionBlock	

QuestionGrid

Type: **Class** Question
Status: Proposed. Version 1.0. Phase 1.0.
Package: Exchange *Keywords:*
Detail: Created on 06/10/2014. Last modified on 06/10/2014.
GUID: {EEA0455C-B78A-4afb-96EF-4C7654A96344}

Definition: A sub-type of *Question* as a NCube-like structure providing dimension information, labeling options, and response domains attached to one or more cells within the grid.

Explanatory Text: A *QuestionGrid* aims at representing a questions set based on at least one dimension.

A *QuestionGrid* has relationship to *ValueDomain* that expresses the response criteria associated with a question. A *QuestionGrid* can be associated with several *Value Domains*.

Custom Properties

- isActive = False

Connections

Connector	Source	Target	Notes
Generalization	Public	Public	

Connector	Source	Target	Notes
Source -> Destination	QuestionGrid	Question	<u>Invariant</u> {excluding(mqi)}
Aggregation structures Source -> Destination	Public Dimension	Public QuestionGrid	

QuestionItem

Type: **Class** **Question**
Status: Proposed. Version 1.0. Phase 1.0.
Package: Exchange **Keywords:**
Detail: Created on 06/10/2014. Last modified on 06/10/2014.
GUID: {94646A44-4F5E-4a73-A15E-25191B4928E9}

Definition: A *Question Item* is a sub-type of *Question*. A Question Item is necessarily unidimensional.

Explanatory Text: A *Question Item* is used to represent a question that does not have more than one information axis.

A *Question Item* aims at representing a questions set based on at least one dimension.

A *Question Item* has relationship to *ValueDomain* that expresses the response criteria associated with a question.

A *Question Item* can be associated with several *Value Domains*.

Custom Properties

- isActive = False

Connections

Connector	Source	Target	Notes
Generalization Source -> Destination	Public QuestionItem	Public Question	<u>Invariant</u> {excluding(mqi)}

Questionnaire

Type: **Class** **ExchangeChannel**
Status: Proposed. Version 1.0. Phase 1.0.
Package: Exchange **Keywords:**
Detail: Created on 10/12/2013. Last modified on 29/12/2013.
GUID: {D677C007-48F0-41e0-98F7-DBCA29AA1C71}

Definition: A concrete and usable tool to elicit information from observation units.

Explanatory Text: This is an example of a way statistical organizations collect information (an exchange channel). Each mode should be interpreted as a new Questionnaire derived from the Questionnaire Specification.

The Questionnaire is a subtype of Exchange Channel, as it is a way in which data is obtained.

Custom Properties

- isActive = False

Connections

Connector	Source	Target	Notes
Generalization Source -> Destination	Public Questionnaire	Public ExchangeChannel	
Aggregation includes Source -> Destination	Public QuestionnaireSpecificat ion	Public Questionnaire	

Attributes

Attribute	Notes	Constraints and tags
DateIssued Date Private	Date the questionnaire was created.	<i>Default:</i>
DateReplacement Date Private	Planned date for the replacement of the questionnaire for other version. It can contain the date in which the new version was issued.	<i>Default:</i>
DetailDocument Link Private	Reference to a document containing details of the implementation of the main elements of the Questionnaire.	<i>Default:</i>
Media String Private	Description of the kind of media conceived for the use of the Questionnaire (printed, electronic, etc.)	<i>Default:</i>

Attribute	Notes	Constraints and tags
SupportArtifacts String Private [0..*]	A list of devices, software programs, storage media, gadgets or other tools needed to support the use of the Questionnaire.	<i>Default:</i>
Survey String Private	Information on the survey which the questionnaire will be used by.	<i>Default:</i>

QuestionnaireComponent

Type: **Class**

Status: Proposed. Version 1.1. Phase 1.0.

Package: Exchange *Keywords:*

Detail: Created on 29/12/2013. Last modified on 06/10/2014.

GUID: {1AEBD22C-1209-4a3f-8EA2-927126662142}

Definition: A record of the flow of a Questionnaire Specification and its use of Questions, Question Blocks and Statements

Explanatory Text: Defines the structure of the Questionnaire Specification, as a combination of Questions, Question Blocks and Statements. It is the object which groups together all the components of a Questionnaire.

A Questionnaire Component is recursive, in that it can refer to other Questionnaire Components and accompanying Questionnaire Logic objects at a lower level. It is only at the top level where the Questionnaire Component links to the Questionnaire Specification.

Custom Properties

- isActive = False

Connections

Connector	Source	Target	Notes
Generalization Source -> Destination	Public QuestionBlock	Public QuestionnaireComponent	
Generalization Source -> Destination	Public Control	Public QuestionnaireComponent	

Connector	Source	Target	Notes
Aggregation includes Source -> Destination	Public InstanceQuestion	Public QuestionnaireComponent	
Aggregation includes Source -> Destination	Public InstanceQuestionBlock	Public QuestionnaireComponent	
Aggregation includes Source -> Destination	Public InstanceStatement	Public QuestionnaireComponent	
Aggregation includes Source -> Destination	Public topLevelComponent QuestionnaireComponent	Public QuestionnaireSpecification	

Attributes

Attribute	Notes	Constraints and tags
componentSequence int Private [0..n]	The order in which instance question, and instance statement appear in the Questionnaire Component	<i>Default:</i>

QuestionnaireLogic

Type: **Class**
Status: Proposed. Version 1.1. Phase 1.0.
Package: Exchange **Keywords:**
Detail: Created on 27/12/2013. Last modified on 27/12/2013.
GUID: {03B9AF36-A8A9-480e-BA15-B80D08B89AA7}

Definition: Governs the sequence of Questions, Question Blocks and Statements based on factors such as the current location, the response to the previous questions etc., invoking navigation and validation rules to apply.

Synonyms: Routing.

Custom Properties

- isActive = False

Connections

Connector	Source	Target	Notes
Aggregation uses	Public	Public	

Connector	Source	Target	Notes
Source -> Destination	Rule	QuestionnaireLogic	

Attributes

Attribute	Notes	Constraints and tags
RoutingInformation String Private	Routing information, which will also use responses from Rule.	<i>Default:</i>

QuestionnaireSpecification

Type: **Class**
Status: Proposed. Version 1.1. Phase 1.0.
Package: Exchange *Keywords:*
Detail: Created on 29/12/2013. Last modified on 06/10/2014.
GUID: {671F4721-FF4D-4eb3-92B7-C9EF59C6D500}

Definition: The tool designed to elicit information from observation Units.

Explanatory Text: This represents the complete questionnaire design, with a relationship to the top level Questionnaire Component.

There may be many different Questionnaire Specifications, for the same surveys, or tailored to individual observation Units (respondents) so that there would be a different Questionnaire Specification for each respondent. The design would also differ depending upon the specific mode of collection the Questionnaire is designed for.

Custom Properties

- isActive = False

Connections

Connector	Source	Target	Notes
Aggregation includes Source -> Destination	Public QuestionnaireSpecificat ion	Public Questionnaire	
Aggregation includes Source -> Destination	Public topLevelComponent QuestionnaireCompone nt	Public QuestionnaireSpecificat ion	

Attributes

Attribute	Notes	Constraints and tags
ValidFrom Date Private [0..1]	The date from which the object can be used	<i>Default:</i>
ValidTo Date Private [0..1]	The date after which the object cannot be used	<i>Default:</i>

Scraping Process Map

Type: **Class**
Status: Proposed. Version 1.1. Phase 1.0.
Package: Exchange *Keywords:*
Detail: Created on 27/12/2013. Last modified on 27/12/2013.
GUID: {802E0C41-52DC-4587-BF09-AC75D676FB71 }

Definition: Maps a web scraping process to a specific website.

Explanatory Text: Scraping Process Map is an essential element of the Web Scraper Channel. The process being mapped can be a Business Service or a Process Step.

Custom Properties

- isActive = False

Connections

Connector	Source	Target	Notes
Aggregation associates Source -> Destination	Public ProcessStep	Public Scraping Process Map	
Aggregation identifies Source -> Destination	Public InformationProvider	Public Scraping Process Map	
Aggregation uses Source -> Destination	Public Scraping Process Map	Public WebScraperChannel	

Attributes

Attribute	Notes	Constraints and tags
DateIssued Date Private [0..1]	Date the mapping was issued.	<i>Default:</i>
DateReplacement Date Private [0..1]	Date the mapping was replaced.	<i>Default:</i>

Statement

Type:

Class

Status:

Proposed. Version 1.1. Phase 1.0.

Package:

Exchange *Keywords:*

Detail:

Created on 29/12/2013. Last modified on 06/10/2014.

GUID:

{4FD63613-7FF5-408a-905E-367A76C13364}

Definition: A report of facts in a Questionnaire

Explanatory Text: Statements are often included to provide further explanation to respondents. Example:

"The following questions are about your health".

The object is also used to represent completion instructions for the interviewer or respondent.

Statement should be designed with re-use in mind as it can be used in numerous Questionnaires .

Synonyms: Interviewer Instruction, Instruction

Custom Properties

- isActive = False

Connections

Connector	Source	Target	Notes
Generalization Source -> Destination	Public Instruction	Public Statement	
Generalization Source -> Destination	Public StatementItem	Public Statement	

Connector	Source	Target	Notes
Aggregation uses Source -> Destination	Public Statement	Public InstanceStatement	

Attributes

Attribute	Notes	Constraints and tags
StatementText String Private [0..1]	The information, note, fact or instruction text making up the statement	<i>Default:</i>

StatementItem

Type: **Class** **Statement**

Status: Proposed. Version 1.0. Phase 1.0.

Package: Exchange *Keywords:*

Detail: Created on 06/10/2014. Last modified on 06/10/2014.

GUID: {F8A55434-6861-4b2c-917A-42175F84EE46}

Definition: Simply a textual statement that cannot be characterised as neither an Instruction nor a question text.

Explanatory Text: That is a piece of text for information only. For example, a polite form of address: "Thank you for the time spent to fill in this questionnaire".

It inherits from *Statement*.

Custom Properties

- isActive = False

Connections

Connector	Source	Target	Notes
Generalization Source -> Destination	Public StatementItem	Public Statement	

WebScraperChannel

Type: **Class** **ExchangeChannel**

Status: Proposed. Version 1.0. Phase 1.0.

Package: Exchange *Keywords:*

Detail: Created on 10/12/2013. Last modified on 29/12/2013.

GUID: {B281036E-BBC4-49db-A16A-B0DBC6605229}

Definition: A concrete and usable tool to gather information from the Internet.

Explanatory Text: This is an example of a way statistical organizations collect information (an Exchange Channel). The Web Scraper Channel contains Scraping Process Maps, which map the channel to each website targeted for scraping.

Custom Properties

- isActive = False

Connections

Connector	Source	Target	Notes
Generalization Source -> Destination	Public WebScraperChannel	Public ExchangeChannel	
Aggregation uses Source -> Destination	Public Scraping Process Map	Public WebScraperChannel	

TypeOfSequence

Type:

Enumeration

Status:

Proposed. Version 1.0. Phase 1.0.

Package:

Exchange *Keywords:*

Detail:

Created on 06/10/2014. Last modified on 06/10/2014.

GUID:

{A04D4C13-F4B8-4658-B603-E9808AF613F9}

Custom Properties

- isActive = False

Connections

Connector	Source	Target	Notes
Association Unspecified	Public TypeOfSequence	Public QuestionBlock	

Attributes

Attribute	Notes	Constraints and tags
Module string Public «enum»		<i>Default:</i>

Attribute	Notes	Constraints and tags
Paragraphe string Public «enum»		<i>Default:</i>
Sub-module string Public «enum»		<i>Default:</i>

Source

Type: **Package**
Status: Proposed. Version 1.0. Phase 1.0.
Package: Model
Detail: Created on 06/10/2014. Last modified on 06/10/2014
GUID: {54DECF67-558E-40ea-984D-B697856AB080}

Source - (Class diagram)

Created By: etgail on 06/10/2014
Last Modified: 06/10/2014
Version: 1.0. *Locked:* False
GUID: {62B7F046-D74A-46ba-82CE-B52A196E790D}

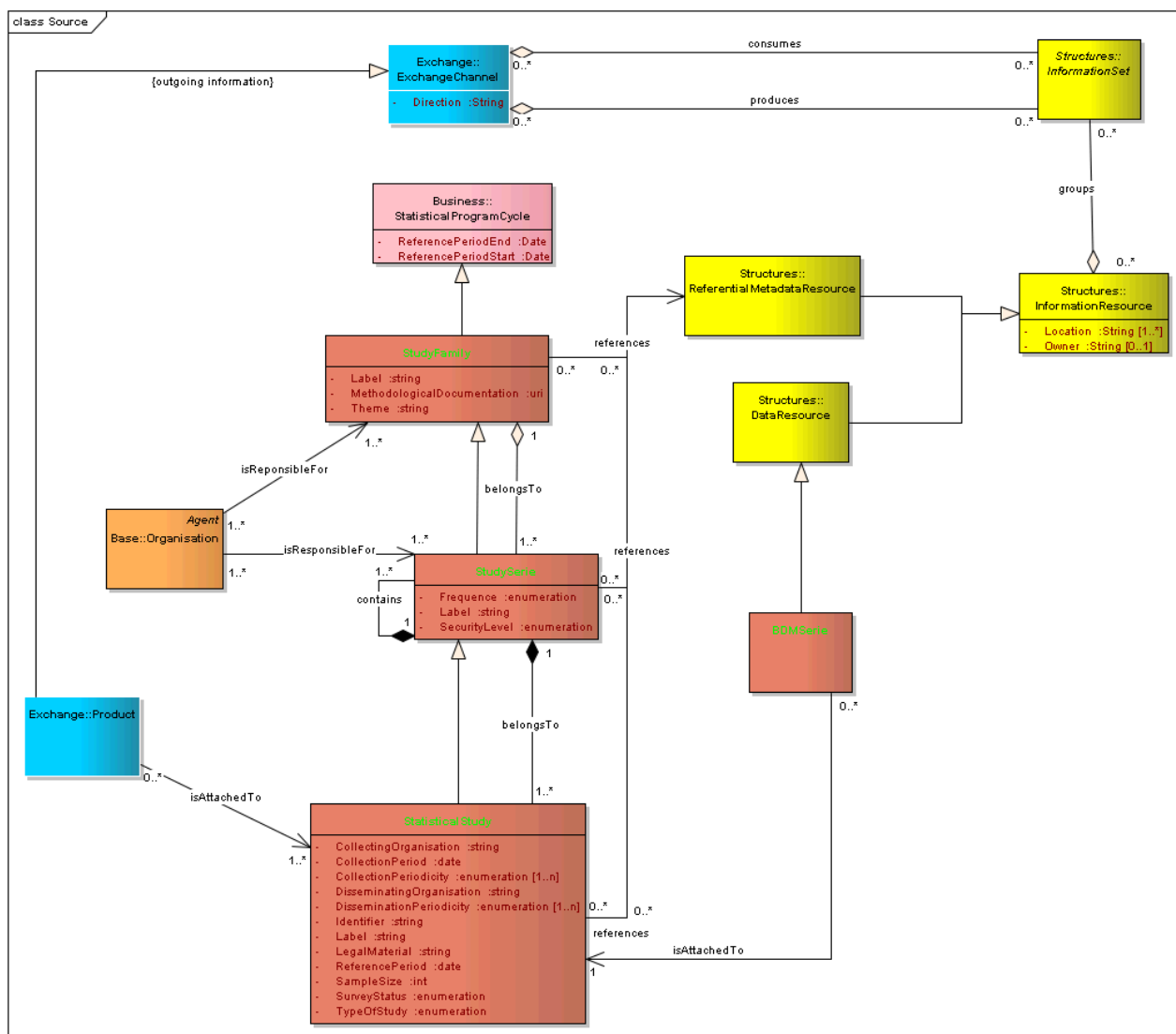


Figure: 15

BDMSerie

Type:

Class DataResource

Status:

Proposed. Version 1.0. Phase 1.0.

Package:

Source *Keywords:*

Detail:

Created on 06/10/2014. Last modified on 06/10/2014.

GUID:

{0C992BE7-E749-4813-AE26-ED3C9273D8D5}

Definition : A specific type of *DataSets*. The BDM (Banque de Données Macro-économiques) is Insee's main time series and indices database which provides a large set of socio-economic statistics.

Custom Properties

- isActive = False

Connections

Connector	Source	Target	Notes
Generalization Source -> Destination	Public BDMSerie	Public DataResource	
Association isAttachedTo Source -> Destination	Public BDMSerie	Public StatisticalStudy	

StatisticalStudy

Type: **Class** StudySerie

Status: Proposed. Version 1.0. Phase 1.0.

Package: Source *Keywords:*

Detail: Created on 06/10/2014. Last modified on 08/10/2014.

GUID: {D317AC3D-E2A9-4873-A433-B541BFD3EE1E}

Definition : A major entity in the statistical activities cycle which centralises the input, the processes and the products from the public statistical activity. A Statistical Study can be defined as a unique and coherent set of data collections, captures and processing.

Explanatory note: It still usually deals with traditional statistical surveys most of the time are " year stamped" - we use a wine metaphore in French saying that a survey has a vintage year - (e.g Continuing Labour Force Survey 2014).

It can also deal with oen-shot survey (e.g the French ENRJ, National Survey on Resources of Young People), or an instance of a longitudinal Survey (Information System on New Businesses SINE 2010).

Moreover, the *Statistical Study* includes as well the integration of Administrative Data (e.g,the Annual Declaration of Social Data, DADS 2012).

Custom Properties

- isActive = False

Connections

Connector	Source	Target	Notes
Generalization Source -> Destination	Public StatisticalStudy	Public StudySerie	
Aggregation belongsTo Source -> Destination	Public StatisticalStudy	Public StudySerie	
Association isAttachedTo Source -> Destination	Public BDMSerie	Public StatisticalStudy	
Association isAttachedTo Source -> Destination	Public Product	Public StatisticalStudy	

Connector	Source	Target	Notes
Association references Source -> Destination	Public StatisticalStudy	Public ReferentialMetadataRes ource	

Attributes

Attribute	Notes	Constraints and tags
CollectingOrganisation string Private		<i>Default:</i>
CollectionPeriod date Private		<i>Default:</i>
CollectionPeriodicity enumeration Private [1..n]		<i>Default:</i>
DisseminatingOrganisati on string Private		<i>Default:</i>
DisseminationPeriodicity enumeration Private [1..n]		<i>Default:</i>
Identifier string Private		<i>Default:</i>

Attribute	Notes	Constraints and tags
Label string Private		<i>Default:</i>
LegalMaterial string Private		<i>Default:</i>
ReferencePeriod date Private		<i>Default:</i>
SampleSize int Private		<i>Default:</i>
SurveyStatus enumeration Private		<i>Default:</i>
TypeOfStudy enumeration Private		<i>Default:</i>

StudyFamily

Type: **Class** **StatisticalProgramCycle**
Status: Proposed. Version 1.0. Phase 1.0.
Package: Source **Keywords:**
Detail: Created on 06/10/2014. Last modified on 08/10/2014.
GUID: {15F8FA01-B34A-4a01-869B-11B9FA27D60E}

Definition : The *Study Family* is very close to the generic notion of theme. It brings together *Study Series* sharing the same theme and/or fulfilling the same objectives, although based on either deeply divergent methodologies or with different general calculation basis for indices.

Explanatory note: It usually deals with Study Series which have seen their methodology evolved over time, so that one would be willing to distinguish Study Series based on them. The split can also occur after resetting indices . However, their main objective remains broadly the same.

The three most popular examples at Insee are:

- The quarterly Continuing Labour Force Survey which has superseded since 2003 the Annual Labour Force Survey along with a dramatic overhaul of the statistical methodology.
- The renovated Population Census (survey-based) which has superseded since 2004 the exhaustive Population Census. It has been an in-depth change in the census methods
- The National Accounts (base 2010) which superseded National Accounts (base 2005).

Custom Properties

- isActive = False

Connections

Connector	Source	Target	Notes
Generalization Source -> Destination	Public StudySerie	Public StudyFamily	
Generalization Source -> Destination	Public StudyFamily	Public StatisticalProgramCycl e	
Aggregation belongsTo Source -> Destination	Public StudySerie	Public StudyFamily	
Association isReponsibleFor Source -> Destination	Public Organisation	Public StudyFamily	
Association references Source -> Destination	Public StudyFamily	Public ReferentialMetadataRes ource	

Attributes

Attribute	Notes	Constraints and tags
Label string		<i>Default:</i>

Attribute	Notes	Constraints and tags
Private		
MethodologicalDocument uri Private		<i>Default:</i>
Theme string Private		<i>Default:</i>

StudySerie

Type: **Class** **StudyFamily**

Status: Proposed. Version 1.0. Phase 1.0.

Package: Source **Keywords:**

Detail: Created on 06/10/2014. Last modified on 08/10/2014.

GUID: {857DFD98-5B3A-43c5-9046-56CACA6363AD}

Definition : A *Study Serie* brings together Statistical Studies which share both a **homogeneous methodology and a key business feature**. The latter one can be viewed as the main objective of the *Statistical Study*. For instance, measuring employment in France. A *Study Serie* can be hierarchical and contain other *Study Series*.

Explanatory note: A *Study Serie* can either gather :

- Several campaigns of a same survey following one another over time (e.g : Continuing Labour Force Survey 2012, Continuing Labour Force Survey 2012 2013, etc.)
- Several campaigns of a cohort survey, such as the Elfe survey (Etude Longitudinale française depuis l'enfance) which aims at following 20 000 children from their birth until adulthood.
- The various occurrences of a longitudinal survey such as SINE (Système d'Information des Nouvelles Entreprises) which serves to analyse the start-up and development conditions of enterprises and the problems they encounter over the first five years of their existence (financial difficulties, mechanisms leading to the hiring of staff, opening-up of markets, etc.)
- Les vagues d'une enquête par panel, comme le panel politique de la ville, enquête menée auprès de 3 000 personnes interrogées pendant quatre ans sur leur situation personnelle et économique depuis l'été 2011.
- The various schemes which take care of administrative data, such as the DADS (annual declaration of social data) 2012, DADS 2013, etc.
- Annual surveys subdivided themselves into monthly surveys (e.g, les Enquêtes Mensuelles de Branche dans l'Industrie 2011 et 2010, themselves subdivided into Monthly Branch Survey in 'Industry June 2011, July 2011, etc.)

Custom Properties

- isActive = False

Connections

Connector	Source	Target	Notes
Generalization Source -> Destination	Public StatisticalStudy	Public StudySerie	
Generalization Source -> Destination	Public StudySerie	Public StudyFamily	
Aggregation belongsTo Source -> Destination	Public StatisticalStudy	Public StudySerie	
Aggregation belongsTo Source -> Destination	Public StudySerie	Public StudyFamily	
Aggregation contains Source -> Destination	Public StudySerie	Public StudySerie	
Association isResponsibleFor Source -> Destination	Public Organisation	Public StudySerie	
Association references Source -> Destination	Public StudySerie	Public ReferentialMetadataRes ource	

Attributes

Attribute	Notes	Constraints and tags
Frequence enumeration Private		<i>Default:</i>
Label string Private		<i>Default:</i>
SecurityLevel		<i>Default:</i>

Attribute	Notes	Constraints and tags
enumeration Private		

Structures

Type: **Package**
Status: Proposed. Version 1.0. Phase 1.0.
Package: Model
Detail: Created on 05/12/2013. Last modified on 05/12/2013
GUID: {72EE8E8F-EA44-4ed3-B86D-E14156C62E9E}

Data_Set_Structure - (Class diagram)

Created By: Chris on 05/12/2013
Last Modified: 31/12/2013
Version: 1.0. *Locked:* False
GUID: {9777DE19-511E-4752-A13A-5017208BA2E1}

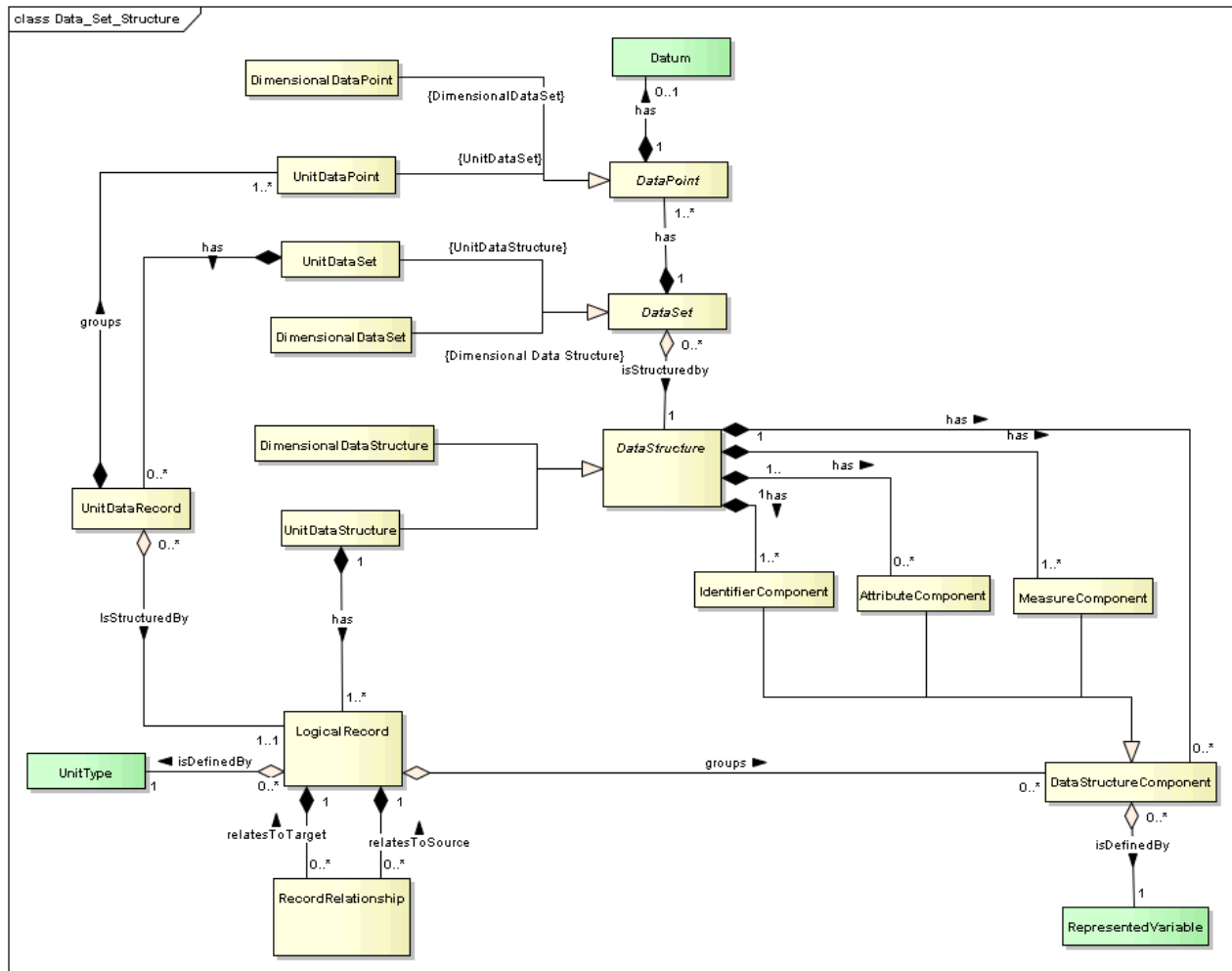


Figure: 16

Information Resource - (Class diagram)

Created By: Chris on 05/12/2013

Last Modified: 17/12/2013

Version: 1.0. Locked: False

GUID: {CA8EEEF6-54A5-49e8-A9B6-5064807FD0F7}

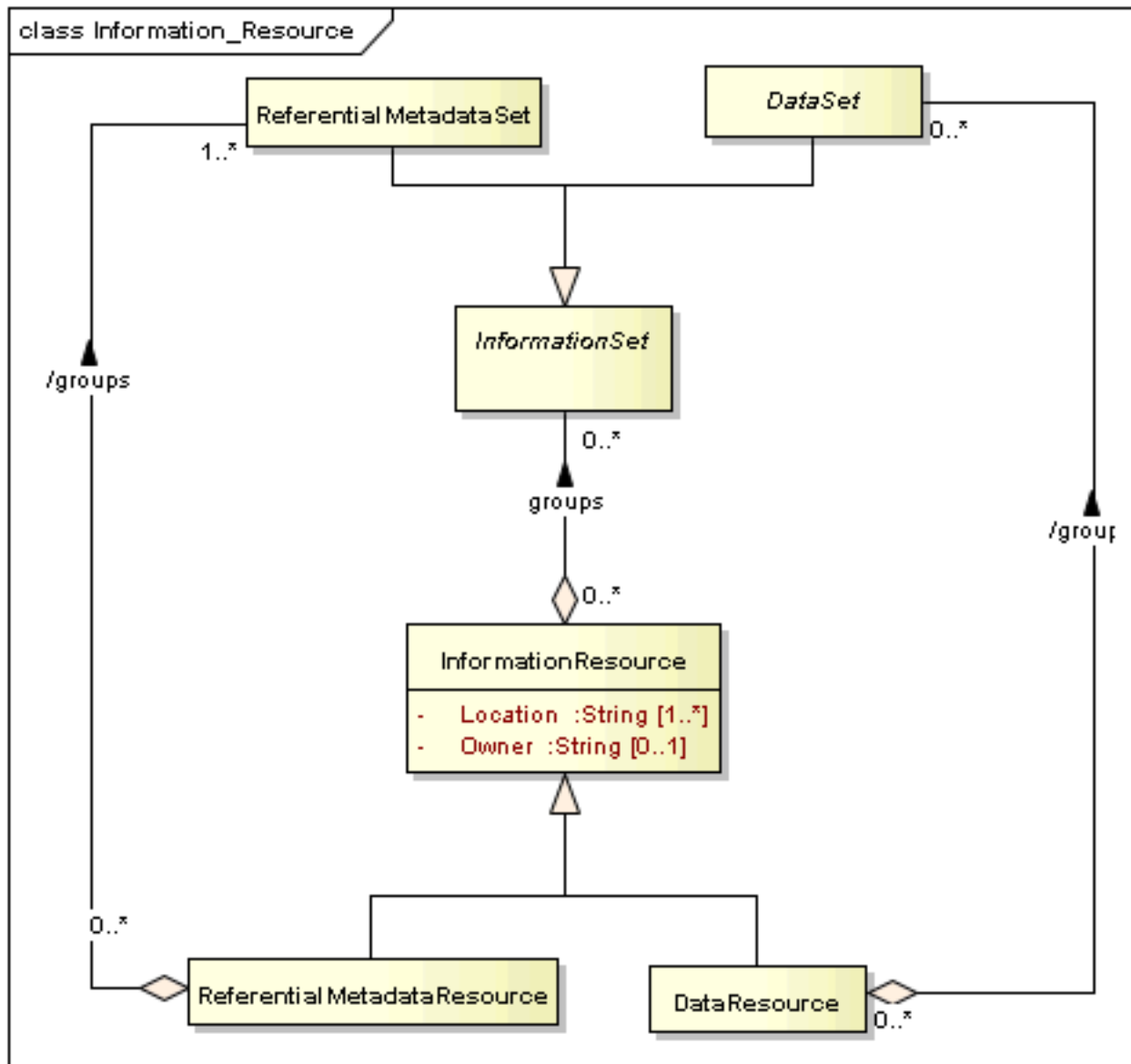


Figure: 17

Referential_Metadata_Set_Structure - (Class diagram)

Created By: Chris on 09/12/2013

Last Modified: 17/12/2013

Version: 1.0. Locked: False

GUID: {6FE80AFC-734B-4e39-B9E5-8E728BAE497F}

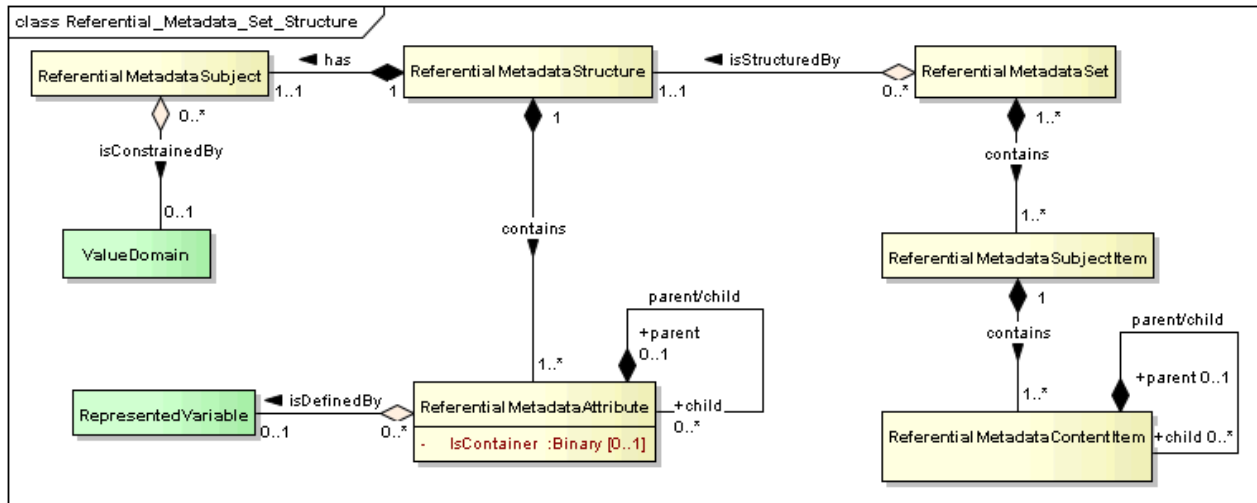


Figure: 18

AttributeComponent

Type: Class **DataStructureComponent**
Status: Proposed. Version 1.0. Phase 1.0.
Package: Structures **Keywords:**
Detail: Created on 09/12/2013. Last modified on 31/12/2013.
GUID: {AD3A7141-69A9-48d3-A833-BC66BD12071B}

Definition: The role given to a Represented Variable in the context of a Data Structure, which supplies information other than identification or measures.

Explanatory Text: For example the publication status of an observation (e.g. provisional, final, revised)

Custom Properties

- isActive = False

Connections

Connector	Source	Target	Notes
Generalization Source -> Destination	Public AttributeComponent	Public DataStructureComponent	
Aggregation has Source -> Destination	Public AttributeComponent	Public DataStructure	

DataPoint

Type: Class
Status: Proposed. Version 1.0. Phase 1.0.

Package: Structures *Keywords:*
Detail: Created on 09/12/2013. Last modified on 10/01/2014.
GUID: {F17537D2-8A9C-4968-ACE3-7EC757F84A25}

Definition: A placeholder (or cell) for the value of an Instance Variable

Explanatory Text: Field in a Data Structure which corresponds to a cell in a table. The Data Point is structural and distinct from the value (the Datum) that it holds.

Custom Properties

- isActive = False

Connections

Connector	Source	Target	Notes
Generalization Source -> Destination	Public DimensionalDataPoint	Public DataPoint	<u>Invariant</u> {DimensionalDataSet}
Generalization Source -> Destination	Public UnitDataPoint	Public DataPoint	<u>Invariant</u> {UnitDataSet}
Aggregation has Source -> Destination	Public identifier InstanceVariable	Public DataPoint	
Aggregation has Source -> Destination	Public DataPoint	Public DataSet	
Aggregation has Source -> Destination	Public Datum	Public DataPoint	
Aggregation has Source -> Destination	Public measure InstanceVariable	Public DataPoint	
Aggregation has Source -> Destination	Public attribute InstanceVariable	Public DataPoint	

DataResource

Type: **Class** **InformationResource**
Status: Proposed. Version 1.0. Phase 1.0.
Package: Structures *Keywords:*
Detail: Created on 10/12/2013. Last modified on 06/10/2014.
GUID: {4B546EBD-687C-4fae-88F8-2006CB3F3BFF}

Definition: An organized collection of stored information made of one or more Data Sets.

Explanatory Text: Data Resources are collections of data that are used by a statistical activity to produce information. Data Resource is a specialization of an Information Resource.

Custom Properties

- isActive = False

Connections

Connector	Source	Target	Notes
Generalization Source -> Destination	Public DataResource	Public InformationResource	
Generalization Source -> Destination	Public BDMSerie	Public DataResource	
Aggregation /groups Source -> Destination	Public DataSet	Public DataResource	

DataSet*Type:***Class InformationSet***Status:*

Proposed. Version 1.0. Phase 1.0.

*Package:*Structures *Keywords:**Detail:*

Created on 09/12/2013. Last modified on 10/01/2014.

GUID:

{012AEFDC-C82C-4dab-9C9B-EDF0F626B177}

Definition: An organized collection of data.

Explanatory Text: Examples of Data Sets could be observation registers, time series, longitudinal data, survey data, rectangular data sets, event-history data, tables, data tables, cubes, registers, hypercubes, and matrixes. A broader term for Data Set could be data. A narrower term for Data Set could be data element, data record, cell, field.

Custom Properties

- isActive = False

Connections

Connector	Source	Target	Notes
Generalization Source -> Destination	Public DimensionalDataSet	Public DataSet	<u>Invariant</u> {Dimensional Data Structure}
Generalization Source -> Destination	Public UnitDataSet	Public DataSet	<u>Invariant</u> {UnitDataStructure}
Generalization	Public	Public	

Connector	Source	Target	Notes
Source -> Destination	DataSet	InformationSet	
Aggregation /groups Source -> Destination	Public DataSet	Public DataResource	
Aggregation has Source -> Destination	Public DataPoint	Public DataSet	
Aggregation isStructuredby Source -> Destination	Public DataStructure	Public DataSet	

DataStructure

Type: **Class**
Status: Proposed. Version 1.0. Phase 1.0.
Package: Structures *Keywords:*
Detail: Created on 09/12/2013. Last modified on 10/01/2014.
GUID: {CDDF0435-0DD7-4bbf-872B-EF3E36309715}

Definition: Defines the structure of an organized collection of data (Data Set).

Explanatory Text: The structure is described using Data Structure Components that can be either Attribute Components, Identifier Components or Measure Components. Examples for unit data include social security number, country of residence, age, citizenship, country of birth, where the social security number and the country of residence are both identifying components and the others are measured variables obtained directly or indirectly from the person (Unit).

Custom Properties

- isActive = False

Connections

Connector	Source	Target	Notes
Generalization Source -> Destination	Public DimensionalDataStructure	Public DataStructure	
Generalization Source -> Destination	Public UnitDataStructure	Public DataStructure	
Aggregation has Source -> Destination	Public IdentifierComponent	Public DataStructure	
Aggregation has Source -> Destination	Public AttributeComponent	Public DataStructure	
Aggregation has Source -> Destination	Public MeasureComponent	Public DataStructure	

Connector	Source	Target	Notes
Aggregation has Source -> Destination	Public DataStructureComponent	Public DataStructure	
Aggregation isStructuredby Source -> Destination	Public DataStructure	Public DataSet	
Aggregation specifiesAgreed Source -> Destination	Public DataStructure	Public ProvisionAgreement	

DataStructureComponent

Type: **Class**
Status: Proposed. Version 1.0. Phase 1.0.
Package: Structures *Keywords:*
Detail: Created on 09/12/2013. Last modified on 31/12/2013.
GUID: {2E867B7C-4AA0-4f68-B3EE-D5B7F27A006A}

Definition: The role of the Represented Variable in the context of a Data Structure.

Explanatory Text: A Data Structure Component can be an Attribute Component, Measure Component or an Identifier Component.

Example of Attribute Component: The publication status of an observation such as provisional, revised.

Example of Measure Component: age and height of a person in a Unit Data Set or number of citizens and number of households in a country in a Data Set for multiple countries (Dimensional Data Set).

Example of Identifier Component: The personal identification number of a Swedish citizen for unit data or the name of a country in the European Union for dimensional data.

Custom Properties

- isActive = False

Connections

Connector	Source	Target	Notes
Generalization Source -> Destination	Public IdentifierComponent	Public DataStructureComponent	
Generalization Source -> Destination	Public AttributeComponent	Public DataStructureComponent	
Generalization	Public	Public	

Connector	Source	Target	Notes
Source -> Destination	MeasureComponent	DataStructureComponent	
Aggregation groups Source -> Destination	Public DataStructureComponent	Public LogicalRecord	
Aggregation has Source -> Destination	Public DataStructureComponent	Public DataStructure	
Aggregation isDefinedBy Source -> Destination	Public RepresentedVariable	Public DataStructureComponent	

DimensionalDataPoint

Type: **Class** **DataPoint**
Status: Proposed. Version 1.0. Phase 1.0.
Package: Structures *Keywords:*
Detail: Created on 09/12/2013. Last modified on 31/12/2013.
GUID: {06A95F7F-D261-4ce5-A189-6080BDF9E061}

Definition: A placeholder (or cell) for the value of an Instance Variable with respect to either a Unit or Population.

Explanatory Text: A Dimensional Data Point is uniquely identified by the combination of exactly one value for each of the dimensions (Identifier Component) and one measure (Measure Component). There may be multiple values for the same Dimensional Data Point that is for the same combination of dimension values and the same measure. The different values represent different versions of the data in the Data Point. Values are only distinguished on the basis of quality, date/time of measurement or calculation, status, etc. This is handled through the mechanisms provided by the Datum information object.

Custom Properties

- isActive = False

Connections

Connector	Source	Target	Notes
Generalization Source -> Destination	Public DimensionalDataPoint	Public DataPoint	<u>Invariant</u> {DimensionalDataSet}
Aggregation isObservationOf Source -> Destination	Public Population	Public DimensionalDataPoint	
Aggregation isObservationOf	Public Unit	Public DimensionalDataPoint	

Connector	Source	Target	Notes
Source -> Destination			

DimensionalDataSet

Type: **Class** DataSet

Status: Proposed. Version 1.0. Phase 1.0.

Package: Structures *Keywords:*

Detail: Created on 09/12/2013. Last modified on 31/12/2013.

GUID: {79E3BAF7-A151-4124-9463-5D7A9A098D54}

Definition: A collection of dimensional data that conforms to a known structure.

Custom Properties

- isActive = False

Connections

Connector	Source	Target	Notes
Generalization Source -> Destination	Public DimensionalDataSet	Public DataSet	Invariant {Dimensional Data Structure}

DimensionalDataStructure

Type: **Class** DataStructure

Status: Proposed. Version 1.0. Phase 1.0.

Package: Structures *Keywords:*

Detail: Created on 09/12/2013. Last modified on 10/01/2014.

GUID: {779A598F-C3CE-445e-B27E-D743128367AC}

Definition: Describes the structure of a Dimensional Data Set.

Explanatory Text: For example (city, average income, total population) where the city is the Identifier Component and the others are measured variables.

Custom Properties

- isActive = False

Connections

Connector	Source	Target	Notes
Generalization Source -> Destination	Public DimensionalDataStruct	Public DataStructure	

Connector	Source	Target	Notes
	ure		

IdentifierComponent

Type: **Class** DataStructureComponent

Status: Proposed. Version 1.0. Phase 1.0.

Package: Structures *Keywords:*

Detail: Created on 09/12/2013. Last modified on 31/12/2013.

GUID: {F70B28F2-E00B-4d44-9E59-53281B01D004}

Definition: The role given to a Represented Variable in the context of a Data Structure to identify the unit in an organized collection of data.

Explanatory Text: An Identifier Component is a sub-type of Data Structure Component. The personal identification number of a Swedish citizen for unit data or the name of a country in the European Union for dimensional data.

Custom Properties

- isActive = False

Connections

Connector	Source	Target	Notes
Generalization Source -> Destination	Public IdentifierComponent	Public DataStructureComponent	
Aggregation has Source -> Destination	Public IdentifierComponent	Public DataStructure	

InformationResource

Type: **Class**

Status: Proposed. Version 1.0. Phase 1.0.

Package: Structures *Keywords:*

Detail: Created on 09/12/2013. Last modified on 06/10/2014.

GUID: {96450C8F-6593-4d35-9589-373564878E9E}

Definition: An abstract notion that is any organized collection of information.

Explanatory Text: There currently are only two concrete sub classes: Data Resource and Referential Metadata Resource. The Information Resource allows the model to be extended to other types of resource.

Custom Properties

- isActive = False

Connections

Connector	Source	Target	Notes
Generalization Source -> Destination	Public ReferentialMetadataResource	Public InformationResource	
Generalization Source -> Destination	Public DataResource	Public InformationResource	
Aggregation groups Source -> Destination	Public InformationSet	Public InformationResource	

Attributes

Attribute	Notes	Constraints and tags
Location String Private [1..*]	A description of the location where the data resource can be found, it could be a physical address or a logical address (like an URI)	<i>Default:</i>
Owner String Private [0..1]	Identification of the person, institution or group which owns the information resource	<i>Default:</i>

InformationSet

Type: **Class**
Status: Proposed. Version 1.0. Phase 1.0.
Package: Structures *Keywords:*
Detail: Created on 10/12/2013. Last modified on 06/10/2014.
GUID: {34B3A4ED-B52A-47e1-8B95-BEFD74B20CF4}

Definition: Organized collections of statistical content.

Explanatory Text: Statistical organizations collect, process, analyze and disseminate Information Sets, which contain data (Data Sets), referential metadata (Referential Metadata Sets), or potentially other types of statistical content, which could be included in addition types of Information Set.

Custom Properties

Custom Properties

- isActive = False

Connections

Connector	Source	Target	Notes
Generalization Source -> Destination	Public ReferentialMetadataSet	Public InformationSet	
Generalization Source -> Destination	Public DataSet	Public InformationSet	
Aggregation consumes Unspecified	Public InformationSet	Public ExchangeChannel	
Aggregation groups Source -> Destination	Public InformationSet	Public InformationResource	
Aggregation presents Source -> Destination	Public InformationSet	Public Presentation	
Aggregation produces Unspecified	Public InformationSet	Public ExchangeChannel	

LogicalRecord

Type: **Class**
Status: Proposed. Version 1.0. Phase 1.0.
Package: Structures *Keywords:*
Detail: Created on 09/12/2013. Last modified on 31/12/2013.
GUID: {7F602201-CB76-49c3-834B-CEA98DE17C7C}

Definition: Describes a type of Unit Data Record for one Unit Type within a Unit Data Set.

Explanatory Text: Examples: household, person or dwelling record.

Custom Properties

- isActive = False

Connections

Connector	Source	Target	Notes
Aggregation groups Source -> Destination	Public DataStructureComponent	Public LogicalRecord	
Aggregation has Source -> Destination	Public LogicalRecord	Public UnitDataStructure	

Connector	Source	Target	Notes
Aggregation isDefinedBy Source -> Destination	Public UnitType	Public LogicalRecord	
Aggregation IsStructuredBy Source -> Destination	Public LogicalRecord	Public UnitDataRecord	
Aggregation relatesToSource Source -> Destination	Public RecordRelationship	Public LogicalRecord	
Aggregation relatesToTarget Source -> Destination	Public RecordRelationship	Public LogicalRecord	

MeasureComponent

Type: **Class** DataStructureComponent

Status: Proposed. Version 1.0. Phase 1.0.

Package: Structures *Keywords:*

Detail: Created on 09/12/2013. Last modified on 31/12/2013.

GUID: {BBBAA382-B6A7-4e57-A462-3DE711B7ED6A}

Definition: The role given to a Represented Variable in the context of a Data Structure to hold the observed/derived values for a particular Unit in an organized collection of data.

Explanatory Text: A Measure Component is a sub-type of Data Structure Component. For example age and height of a person in a Unit Data Set or number of citizens and number of households in a country in a Data Set for multiple countries (Dimensional Data Set).

Custom Properties

- isActive = False

Connections

Connector	Source	Target	Notes
Generalization Source -> Destination	Public MeasureComponent	Public DataStructureComponent	
Aggregation has Source -> Destination	Public MeasureComponent	Public DataStructure	

RecordRelationship

Type: **Class**
Status: Proposed. Version 1.0. Phase 1.0.
Package: Structures *Keywords:*
Detail: Created on 09/12/2013. Last modified on 31/12/2013.
GUID: {95B099DE-9884-49ef-A3A0-ED063050E641}

Definition: Describes relationships between Logical Records within a Unit Data Structure. It must have both a source Logical Record and a target Logical Record in order to define the relationship.

Explanatory Text: Example: Relationship between person and household Logical Records within a Unit Data Set.

Custom Properties

- isActive = False

Connections

Connector	Source	Target	Notes
Aggregation relatesToSource Source -> Destination	Public RecordRelationship	Public LogicalRecord	
Aggregation relatesToTarget Source -> Destination	Public RecordRelationship	Public LogicalRecord	

ReferentialMetadataAttribute

Type: **Class**
Status: Proposed. Version 1.0. Phase 1.0.
Package: Structures *Keywords:*
Detail: Created on 09/12/2013. Last modified on 09/01/2014.
GUID: {214558BE-CE75-4065-83F3-31B4430B9C67}

Definition: The role given to a Represented Variable to supply information in the context of a Referential Metadata Structure.

Custom Properties

- isActive = False

Connections

Connector	Source	Target	Notes
Aggregation contains Source -> Destination	Public ReferentialMetadataAttribute	Public ReferentialMetadataStructure	
Aggregation	Public	Public	

Connector	Source	Target	Notes
isDefinedBy Source -> Destination	RepresentedVariable	ReferentialMetadataAttribute	
Aggregation parent/child Source -> Destination	Public child ReferentialMetadataAttribute	Public parent ReferentialMetadataAttribute	

Attributes

Attribute	Notes	Constraints and tags
IsContainer Binary Private [0..1]	Boolean indicating whether or not this attribute actually will contain a value when reported in a Metadata Set	<i>Default:</i>

ReferentialMetadataContentItem

Type:

Class

Status:

Proposed. Version 1.0. Phase 1.0.

Package:

Structures *Keywords:*

Detail:

Created on 09/12/2013. Last modified on 31/12/2013.

GUID:

{6F5538CB-AEC8-4f3f-97A4-30183A25697E}

Definition: The content describing a particular characteristic of a Referential Metadata Subject.

Explanatory Text: A Referential Metadata Content Item contains the actual content describing a particular characteristic of a Referential Metadata Subject.

Custom Properties

- isActive = False

Connections

Connector	Source	Target	Notes
Aggregation contains Source -> Destination	Public ReferentialMetadataContentItem	Public ReferentialMetadataSubjectItem	
Aggregation parent/child Source -> Destination	Public child ReferentialMetadataContentItem	Public parent ReferentialMetadataContentItem	

ReferentialMetadataResource

Type: Class **InformationResource**
Status: Proposed. Version 1.0. Phase 1.0.
Package: Structures **Keywords:**
Detail: Created on 10/12/2013. Last modified on 06/10/2014.
GUID: {937DE025-07E4-4b9a-95A1-B5C2CF60D0}

Definition: An organized collection of stored information consisting of one or more Referential Metadata Sets.

Explanatory Text: Referential Metadata Resources are collections of structured information that may be used by a statistical activity to produce information. This information object is a specialization of an Information Resource.

Custom Properties

- isActive = False

Connections

Connector	Source	Target	Notes
Generalization Source -> Destination	Public ReferentialMetadataResource	Public InformationResource	
Aggregation /groups Source -> Destination	Public ReferentialMetadataSet	Public ReferentialMetadataResource	
Association references Source -> Destination	Public StatisticalStudy	Public ReferentialMetadataResource	
Association references Source -> Destination	Public StudySerie	Public ReferentialMetadataResource	
Association references Source -> Destination	Public StudyFamily	Public ReferentialMetadataResource	

ReferentialMetadataSet

Type: Class **InformationSet**
Status: Proposed. Version 1.0. Phase 1.0.
Package: Structures **Keywords:**
Detail: Created on 09/12/2013. Last modified on 31/12/2013.
GUID: {35D1EC78-7139-42c6-A113-42A10D2BE594}

Definition: An organized collection of referential metadata for a given Referential Metadata Subject.

Explanatory Text: Referential Metadata Sets organize referential metadata. Each Referential Metadata Set uses a

Referential Metadata Structure to define a structured list of Referential Metadata Attributes for a given Referential Metadata Subject.

Custom Properties

- isActive = False

Connections

Connector	Source	Target	Notes
Generalization Source -> Destination	Public ReferentialMetadataSet	Public InformationSet	
Aggregation /groups Source -> Destination	Public ReferentialMetadataSet	Public ReferentialMetadataRes ource	
Aggregation contains Source -> Destination	Public ReferentialMetadataSu bjectItem	Public ReferentialMetadataSet	
Aggregation isStructuredBy Source -> Destination	Public ReferentialMetadataStr ucture	Public ReferentialMetadataSet	

ReferentialMetadataStructure

Type: **Class**

Status: Proposed. Version 1.0. Phase 1.0.

Package: Structures *Keywords:*

Detail: Created on 09/12/2013. Last modified on 31/12/2013.

GUID: {191195EE-0E9A-4338-AC47-31969218317A}

Definition: Defines the structure of an organized collection of referential metadata (Referential Metadata Set).

Explanatory Text: A Referential Metadata Structure defines a structured list of Referential Metadata Attributes for a given Referential Metadata Subject.

Examples of Referential Metadata Attributes are those that describe quality information and methodologies. Examples of subject are: objects like a Questionnaire or a Classification, or collections of data like a Data Set, or any Data Point or set of Data Points created from a specific Data Structure.

Custom Properties

- isActive = False

Connections

Connector	Source	Target	Notes
-----------	--------	--------	-------

Connector	Source	Target	Notes
Aggregation contains Source -> Destination	Public ReferentialMetadataAttribute	Public ReferentialMetadataStructure	
Aggregation has Source -> Destination	Public ReferentialMetadataSubject	Public ReferentialMetadataStructure	
Aggregation isStructuredBy Source -> Destination	Public ReferentialMetadataStructure	Public ReferentialMetadataSet	
Aggregation specifiesAgreed Source -> Destination	Public ReferentialMetadataStructure	Public ProvisionAgreement	

ReferentialMetadataSubject

Type: **Class**
Status: Proposed. Version 1.0. Phase 1.0.
Package: Structures *Keywords:*
Detail: Created on 09/12/2013. Last modified on 31/12/2013.
GUID: {541A3A04-A0EE-4cab-90BD-22EAC9FD2B42}

Definition: Identifies the subject of an organized collection of referential metadata.

Explanatory Text: The Referential Metadata Subject identifies the subject of the metadata that can be reported using this Referential Metadata Structure. These subjects may be any GSIM object type, or any Data Point or set of Data Points created from a specific Data Structure.

Examples: The GSIM object type may be Product for which there is a list specified in a Value Domain. The Value Domain specifies the list of actual Products for which reference metadata can be reported or authored using this Referential Metadata Structure .

Custom Properties

- isActive = False

Connections

Connector	Source	Target	Notes
Aggregation has Source -> Destination	Public ReferentialMetadataSubject	Public ReferentialMetadataStructure	
Aggregation isConstrainedBy Source -> Destination	Public ValueDomain	Public ReferentialMetadataSubject	

ReferentialMetadataSubjectItem

Type: Class
Status: Proposed. Version 1.0. Phase 1.0.
Package: Structures *Keywords:*
Detail: Created on 09/12/2013. Last modified on 09/01/2014.
GUID: {F71B587A-96A1-4083-BEB9-A4BEC0F555E0}

Definition: Identifies the actual subject for which referential metadata is reported.

Explanatory Text: Examples are an actual Product such as Balance of Payments and International Investment Position, Australia, June 2013, or a collection of Data Points such as the Data Points for a single region within a Data Set covering all regions for a country.

Custom Properties

- isActive = False

Connections

Connector	Source	Target	Notes
Aggregation contains Source -> Destination	Public ReferentialMetadataSubjectItem	Public ReferentialMetadataSet	
Aggregation contains Source -> Destination	Public ReferentialMetadataContentItem	Public ReferentialMetadataSubjectItem	

UnitDataPoint

Type: Class DataPoint
Status: Proposed. Version 1.0. Phase 1.0.
Package: Structures *Keywords:*
Detail: Created on 09/12/2013. Last modified on 31/12/2013.
GUID: {9BCF81E0-7A18-4d6e-99B0-3A4CBE692917}

Definition: A placeholder (or cell) for the value of an Instance Variable with respect to a Unit.

Explanatory Text: This placeholder may point to multiple values representing different versions of the data. Values are only distinguished on the basis of quality, date/time of measurement or calculation, status, etc. This is handled through the mechanisms provided by the Datum information object.

Custom Properties

- isActive = False

Connections

Connector	Source	Target	Notes
Generalization Source -> Destination	Public UnitDataPoint	Public DataPoint	<u>Invariant</u> {UnitDataSet}
Aggregation groups Source -> Destination	Public UnitDataPoint	Public UnitDataRecord	
Aggregation isObservationOf Source -> Destination	Public Unit	Public UnitDataPoint	

UnitDataRecord

Type: **Class**
Status: Proposed. Version 1.0. Phase 1.0.
Package: Structures *Keywords:*
Detail: Created on 31/12/2013. Last modified on 10/01/2014.
GUID: {CB05A17A-CAF2-4969-94B3-10FE273A330C}

Definition: Contains the specific values (as a collection of Unit Data Points) related to a given Unit as defined in a Logical Record.

Explanatory Text: For example (1212123, 48, American, United Kingdom) specifies the age (48) in years on the 1st of January 2012 in years, the current citizenship (American), and the country of birth (United Kingdom) for a person with social security number 1212123.

Custom Properties

- isActive = False

Connections

Connector	Source	Target	Notes
Aggregation groups Source -> Destination	Public UnitDataPoint	Public UnitDataRecord	
Aggregation has Source -> Destination	Public UnitDataRecord	Public UnitDataSet	
Aggregation IsStructuredBy Source -> Destination	Public LogicalRecord	Public UnitDataRecord	

UnitDataSet

Type: **Class** **DataSet**

Status: Proposed. Version 1.0. Phase 1.0.
Package: Structures *Keywords:*
Detail: Created on 09/12/2013. Last modified on 31/12/2013.
GUID: {BE353013-30D4-4a9e-B279-9741A2436BAF}

Definition: A collection of data that conforms to a known structure and describes aspects of one or more Units.

Explanatory Text: Example: A synthetic unit record file is a collection of artificially constructed Unit Data Records, combined in a file to create a Unit Data Set.

Custom Properties

- isActive = False

Connections

Connector	Source	Target	Notes
Generalization Source -> Destination	Public UnitDataSet	Public DataSet	<u>Invariant</u> {UnitDataStructure}
Aggregation has Source -> Destination	Public UnitDataRecord	Public UnitDataSet	

UnitDataStructure

Type: **Class** DataStructure
Status: Proposed. Version 1.0. Phase 1.0.
Package: Structures *Keywords:*
Detail: Created on 09/12/2013. Last modified on 31/12/2013.
GUID: {95BEC99A-64EC-4dd2-8B0C-8E121C714632}

Definition: Describes the structure of a Unit Data Set.

Explanatory Text: For example (social security number, country of residence, age, citizenship, country of birth) where the social security number and the country of residence are the identifying components (Identifier Component) and the others are measured variables obtained directly or indirectly from the person (Unit) and are Measure Components of the Logical Record.

Custom Properties

- isActive = False

Connections

Connector	Source	Target	Notes
Generalization Source -> Destination	Public UnitDataStructure	Public DataStructure	

Connector	Source	Target	Notes
Aggregation has Source -> Destination	Public LogicalRecord	Public UnitDataStructure	