

EESW 2015

8 September 2015 Poznan



Ways to improve the quality of contact details, especially address data in Business Register

EESW 2015
8 September 2015 Poznan

Eszter Baranyabán



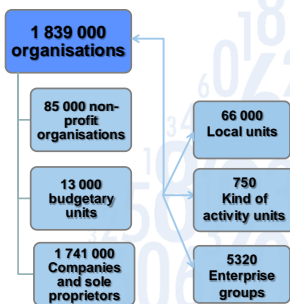
Content of the presentation

- Short introduction of the Hungarian BR
- Description of the problem we had to face with
- Solution 1
- Solution 2
- Communication and future plans

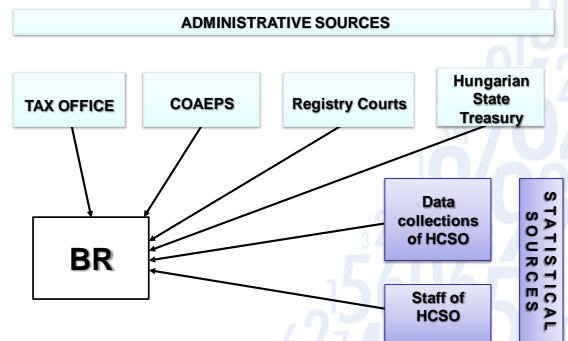


Business Register

- Centralized database for the whole country
- Integrated part of the „Single Window System”
- The tax number is the unique identifier
- No thresholds in the system
- All economic sectors are covered



BR Source model



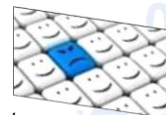
Maintenance of the Register

Way of maintenance	Maintained information	Frequency
Automatic corrections	Information provided by administrative sources	Daily
Manual corrections	Sign from enterprise about incorrect variables Incoincidences in transmission from administrative sources	Occasionally
Survey information	Changes of statistical activity	Once a year Occasionally
	Yearly turnover	Once a year for year t-2
Tax office data	Number of employees/ annual average	Once a year 1st half t-1 t-2
	Turnover and employment figures of not surveyed organisations	Once a year for year t-2



Description of the problem

- Complaints about the correctness of addresses
 - from clients
 - from data-collectors
 - from partners
- Letters with 'address unknown' note



Ways to improve the quality of contact details, especially address data in BR
(written by Eszter Baranyabán)

EESW 2015

8 September 2015 Poznan

KSH HUNGARIAN CENTRAL STATISTICAL OFFICE

**Solution 1.
Creation of Rules of Procedure of
Address management**

What is it?

- Open system
- For colleagues
- In order to make notification of the required changes of addresses

KSH HUNGARIAN CENTRAL STATISTICAL OFFICE

**Solution 1.
Creation of Rules of Procedure of
Address management**

- In practise it is an Excel table
- Accessible for everyone in the office (every department has a separate Excel sheet)
- Permanent working field
- Two coordinators per department

KSH HUNGARIAN CENTRAL STATISTICAL OFFICE

**Solution 1.
Creation of Rules of Procedure of
Address management**

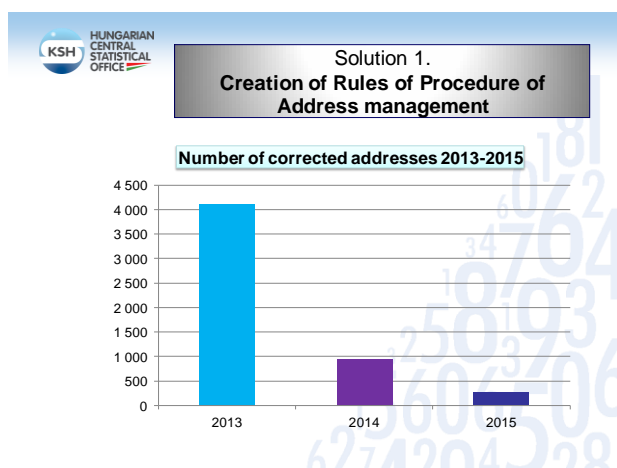
➤ **Content of the Excel table:**

- Identity number
- Name of the organisation
- Incorrect address
- „New”, correct address, if it is available
- Date of the data recording
- Name of the filler
- The result of data correcting
- Date of the data correcting
- Name of the maintainer

KSH HUNGARIAN CENTRAL STATISTICAL OFFICE

**Solution 1.
Creation of Rules of Procedure of
Address management**

- **Advantages:**
 - Quick answer
 - Without special resource demand
 - The scope of the correction
- **Disadvantages:**
 - Manual correction
 - The number of correction is relatively low



KSH HUNGARIAN CENTRAL STATISTICAL OFFICE

**Solution 2.
Link to newly developed Register of
Addresses**

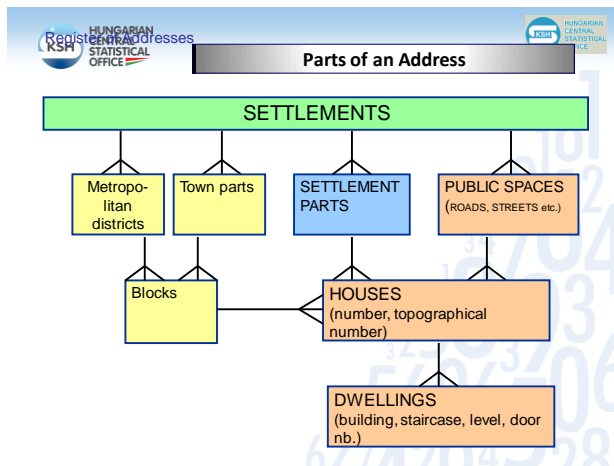
What is the Register of Addresses?

- Basic system of the Hungarian Central Statistical Office
- Keeps record of the most complete and actual Hungarian addresses
- Continuous updating
- Standardized tool
- Basis of geodata

Ways to improve the quality of contact details, especially address data in BR
(written by Eszter Baranyabán)

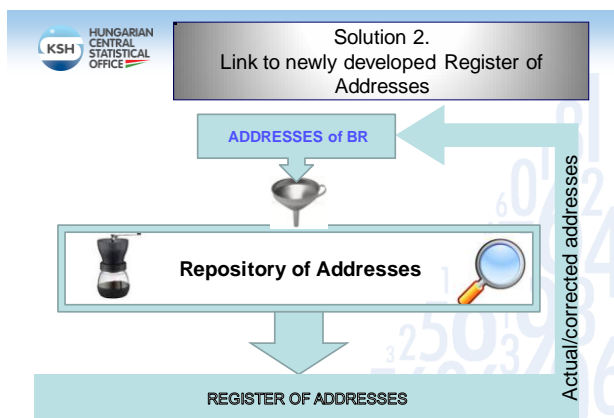
EESW 2015

8 September 2015 Poznan

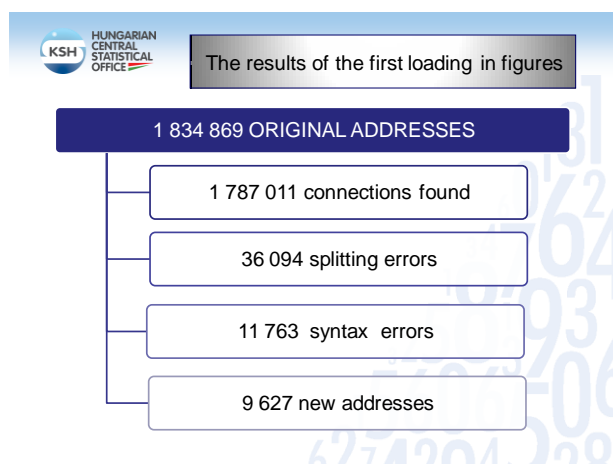


Solution 2.
Link to newly developed Register of Addresses

- Advantages:
 - Suitable for discovering errors in large quantity
 - Subsequent changes of the address data are detectable
 - IT supported
- Disadvantages:
 - Dependence on Register of Addresses
 - High development costs



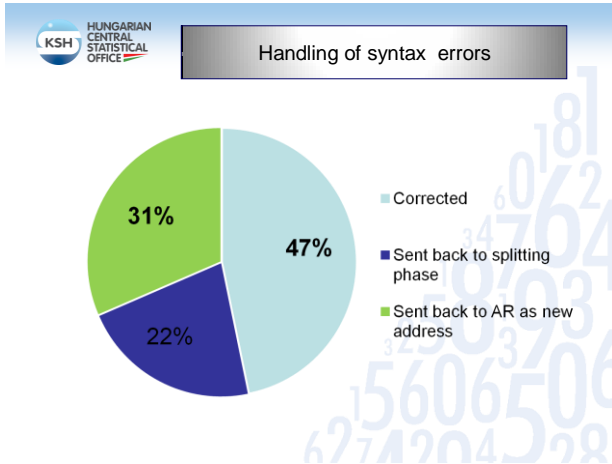
Address data on BR form



Ways to improve the quality of contact details, especially address data in BR
(written by Eszter Baranyabán)

EESW 2015

8 September 2015 Poznan



KSH HUNGARIAN CENTRAL STATISTICAL OFFICE

Communication and Future Plans

All partners were informed in letter about

- the increase of address information field size (from 40 to 80 characters)
- the quality improvement

The project is ongoing. Our futures planes are

- to correct splitting errors (2015)
- to make the connection between the two registers online (2015)
- to implement Geodata in BR (2016)

KSH HUNGARIAN CENTRAL STATISTICAL OFFICE

Thank you for your attention!

E-mail: Eszter.Baranyaban@ksh.hu
Web: www.ksh.hu